
Situational awareness and forecasting for Norway

FHI COVID-19 modelling team

Week 28, 28 July 2021

Highlights:

- **National epidemiological situation:** According to our changepoint model, the estimated effective reproduction number is 0.90 (median, 95% CI 0.62 - 1.26), on average since 5 July. Before that, from 15 June to 4 July, the estimated effective reproduction number is 0.98 (median, 95% CI 0.79- 1.18). The estimated probability of the effective reproduction number to be above 1 since 5 July is 32%. The SMC model estimates the 7-days averaged effective reproduction number during week 29 to be 1.18 (mean, 95% CI 0.93-1.47). In the SMC model, the estimated probability that the daily reproduction number one week ago was above 1 is 92%. The Epiestim model, which uses only test data, estimates the effective reproduction number as 1.1 (95% CI 1.02-1.19). There has been a slightly increasing trend in new cases recently that can explain the results of EpiEstim and SMC with estimated reproduction numbers somewhat above 1.

Since the start of the epidemic, we estimate that in total, 236.000 (95% CI 216.000- 258.000) individuals in Norway have been infected. The current estimate of the detection probability is around ~57%, with a slight decreasing tendency in recent weeks.

- **National forecasting:** In one week, on 1 August, we estimate approximately 280 new cases per day (median; 95% CI 95-636), and a prevalence (total number of presently infected individuals in Norway) of 1750 (median; 95% CI 700-3550). The number of COVID-19 patients in hospital (daily prevalence) on 1 August is estimated to be 21 (median 95% CI 11-37), and the number of patients on ventilator treatment is estimated to be 4 (median 95% CI 1-9); the corresponding predictions in three weeks (15 August) are 21 (95% CI 7 - 45) and 4 (95% CI 0 - 11). These predictions are, as usual, under the assumption that nothing is changed since today, so no changes in interventions, no changes in mobility, and people's behaviour. We get an excellent fit to the hospital incidence data. The model also captures the recent hospital prevalence data well. The situation regarding hospitalisation is stable.

Long-term scenarios with vaccination suggest show that further reopening is possible during the coming months. Given the assumption of a high seasonality effect of 50%, the model expects some resurgence in the coming autumn and winter months. Because of vaccination, the probability that the surge capacity will exceed 500 ventilator beds is extremely low.

- **Regional epidemiological situation and forecasting:** This week, in all counties except Vestland and Viken, the estimated reproduction numbers appear to be around or below 1. According to the regional changepoint model (rCPM), the estimated effective reproduction number in Oslo since the 10th of June is 0.7 (95% CI 0.4-1.2). The regional SMC (rSMC) estimate for 18 July is 0.4 (95% CI (0.2 - 1.2). EpiEstim points to 1.0 (0.8 - 1.1). The results indicate that there has been a declining trend in Oslo over the last month, possibly with a more flat trend in the last weeks.

For Viken, the rCPM gives an estimate of 1.2 (95% CI 1.0-1.4), the rSMC estimates 0.6 (95% CI 0.2-1.1) on 18 July, and EpiEstim results in 1.1 (0.9 - 1.2). These results together indicate that there has likely been a slowly increasing trend in Viken since 10 June.

The situation in Vestland, according to the rCPM, from 30 June, leads to an estimated effective reproduction number 1.9 (95% 1.0 - 2.8) while the rSMC model on 18 July gives 1.6 (95% CI 1.3 -

2.1) and EpiEstim gives 1.5 (1.3-1.7). The more recent estimates show a notable upward trend in this county.

Oslo: The number of new cases per day is estimated to be 14 (median, 95% CI 5 - 47) on 1 August and 15 August to be 18 (5-57). Hospital prevalence in the coming one to three weeks is estimated to be 1 (median; 95% CI 0-6).

- **Telenor mobility data and the number of foreign visitors:** Inter-municipality mobility has increased the last weeks, except for Oslo and Viken. Current levels are similar or higher in all counties, compared to that of the previous summer. The number of foreign visitors to Norway has increased substantially in the the last couple of weeks, most noticeably visitors from Germany, Sweden and Denmark. The rise in visitors is non-uniform across the country; the number of foreign roamers in Oslo is high but relatively constant. The numbers of foreign visitors from India, Pakistan, and Myanmar have been stable since February.

What this report contains:

This report presents results based on a mathematical infectious disease model describing the geographical spread of COVID-19 in Norway. We use a metapopulation model (MPM) for situational awareness and short-term forecasting and an individual-based model (IBM) for long-term predictions. The metapopulation model (MPM) consists of three layers:

- Population structure in each municipality.
- Mobility data for inter-municipality movements (Telenor mobile phone data).
- Infection transmission model (SEIR-model)

The MPM model produces estimates of the current epidemiological situation at the municipality, county (fylke), and national levels, a forecast of the situation for the next three weeks. We run three different models built on the same structure indicated above: (1) a national changepoint model, (2) a regional changepoint model and (3) a national Sequential Monte Carlo model, named SMC model.

How we calibrate the model: The national changepoint model is fitted to Norwegian COVID-19 hospital incidence data from March 10 until yesterday and data on the laboratory-confirmed cases from May 1 until yesterday. We do not use data before May 1, as the testing capacity and testing criteria were significantly different in the early period.

Note that the the national changepoint model results are not a simple average or aggregation of the results of the regional changepoint model because they use different data. The estimates and predictions of the regional model are more uncertain than those of the national model. The regional model has more parameters to be estimated and less data in each county; lack of data limits the number of changepoints we can introduce in that model. In the regional changepoint model, each county has its own changepoints and therefore a varying number of reproduction numbers. Counties where the data indicate more variability have more changepoints.

The national SMC model is also calibrated to the hospitalisation incidence data (same data as described above) and the laboratory-confirmed cases.

Telenor mobility data: The mobility data account for the changes in the movement patterns between municipalities that have occurred since the start of the epidemic.

How you should interpret the results: The model is stochastic. To predict the probability of various outcomes, we run the model multiple times to represent the inherent randomness.

We present the results in terms of mean values, 95% credibility intervals, medians, and interquartile ranges. We emphasise that the credibility bands might be broader than what we display because there are several sources of additional uncertainty which we currently do not fully explore. Firstly, there are uncertainties related to the natural history of SARS-CoV-2, including the importance of asymptomatic and presymptomatic infection. Secondly, there are uncertainties associated with the hospitalisation timing relative to symptom onset, the severity of the COVID-19 infections by age, and the duration of hospitalisation and ventilator treatment in ICU. We continue to update the model assumptions and parameters following new evidence and local data as they become available. A complete list of all updates can be found at the end of this report.

Estimates of all reproductive numbers are uncertain, and we use their distribution to assure appropriate uncertainty of our predictions. Uncertainties related to the model parameters imply that the reported effective reproductive numbers should be interpreted with caution.

When we forecast beyond today, we use the most recent reproduction number for the whole future, if not explicitly stated otherwise.

In this report, the term patient in ventilator treatment includes only those patients that require either invasive mechanical ventilation or ECMO (Extracorporeal membrane oxygenation).

1 Estimated national reproduction numbers

Calibration of our national changepoint model to hospitalisation incidence data and test data leads to the following estimates provided in table 1. Figure 1 shows the estimated daily number of COVID-19 patients admitted to hospital (1a) and the estimated daily number of laboratory-confirmed SARS-CoV-2 cases (1b), with blue medians and interquartile bands, which are compared to the actual true data, provided in red. The uncertainty captures the uncertainty in the calibrated parameters in addition to the stochastic elements of our model and the variability of other model parameters.

Table 1: Calibration results

Reff	Period
2.98/3.01(2.54-3.58)	From Feb 17 to Mar 14
0.5/0.5(0.45-0.55)	From Mar 15 to Apr 19
0.67/0.67(0.37-0.95)	From Apr 20 to May 10
0.81/0.79(0.41-1.08)	From May 11 to Jun 30
0.6/0.65(0.08-1.39)	From Jul 01 to Jul 31
1.07/1.09(0.86-1.34)	From Aug 01 to Aug 31
0.99/0.99(0.82-1.14)	From Sep 01 to Sep 30
1.17/1.18(1.01-1.33)	From Oct 01 to Oct 25
1.27/1.27(1.07-1.48)	From Oct 26 to Nov 04
0.84/0.84(0.76-0.89)	From Nov 05 to Nov 30
1.03/1.04(1-1.09)	From Dec 01 to Jan 03
0.58/0.58(0.48-0.66)	From Jan 04 to Jan 21
0.74/0.75(0.64-0.87)	From Jan 22 to Feb 07
1.43/1.44(1.36-1.54)	From Feb 08 to Mar 01
1.09/1.09(1.03-1.14)	From Mar 02 to Mar 24
0.77/0.77(0.73-0.81)	From Mar 25 to Apr 15
0.83/0.83(0.77-0.9)	From Apr 16 to May 05
1.08/1.08(0.95-1.19)	From May 06 to May 19
0.66/0.66(0.57-0.75)	From May 20 to Jun 14
0.98/0.98(0.79-1.18)	From Jun 15 to Jul 04
0.9/0.92(0.62-1.26)	From Jul 05
Median/Mean (95% credible intervals)	

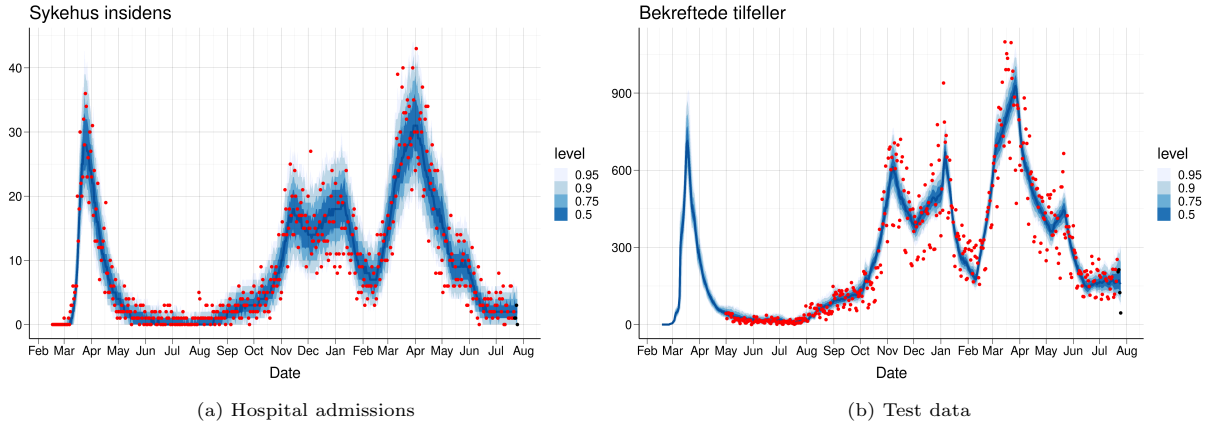


Figure 1: A comparison of true data (red) and predicted values (blue) for hospital admissions and test data. The last four data points (black) are assumed to be affected by reporting delay. B) Comparison of our simulated number of positive cases, with blue median and interquartile bands to the actual true number of positive cases, provided in red. The uncertainty captures the uncertainty in the calibrated parameters, in addition to the stochastic elements of our model and the variability of other model parameters. Note that we do not capture all the uncertainty in the test data—our blue bands are quite narrow. This is likely because we calibrate our model parameters on a 7-days moving average window of test data, instead of daily. Moving averages over 7 days are less variable than the daily data.

1.1 National SMC-model: Estimated daily reproduction numbers

In figure 2, we show how our national model fits the national hospital prevalence data (2a) and the daily number of patients receiving ventilator treatment (2b). Those data sources are not used to estimate the parameters, and can therefore be seen as a validation of the model assumptions.

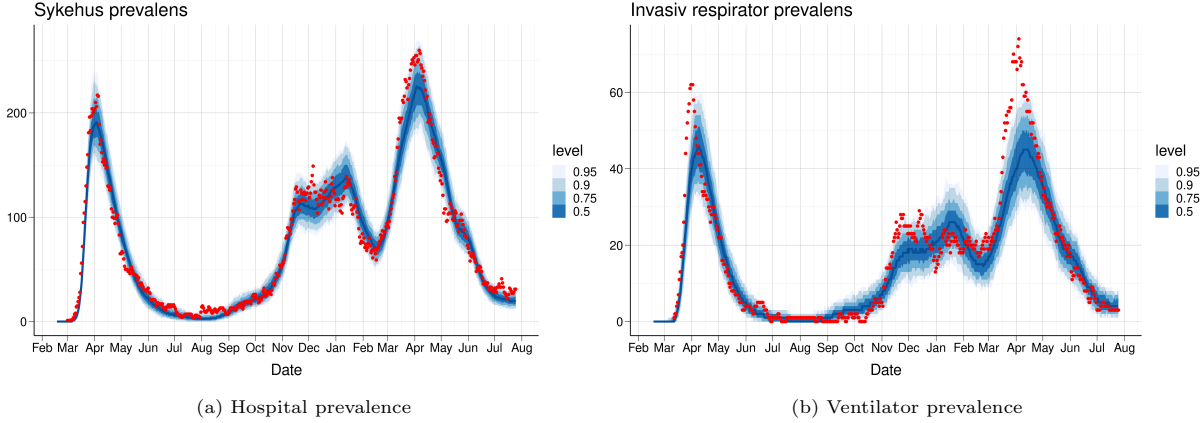


Figure 2: A comparison of true data (red) and predicted values (blue) for hospital and respirator prevalence. Prevalence data is based on NIPaR and may be different to the data from Helsedirektoratet.

1.1 National SMC-model: Estimated daily reproduction numbers

In the SMC-model, we allow for estimation of a different reproduction number for each day t . To reduce spurious fluctuation, we report a 7-days moving average, $R(t)$, representing the average reproduction number for the whole week before day t . However, until March 8 we keep the reproduction number constant. By assuming a time varying reproduction number $R(t)$, we can detect changes without introducing explicit changepoints. Thus, we can easier detect unexpected changes.

The SMC model uses the daily number of new admissions to hospital and the daily number of positive and negative lab-confirmed tests, to estimate all its parameters. Because of the time between infection and the possibility to be detected as positive by a test, and because of a delay in reporting tests, the data contain information on the transmissibility until a week before the end of the data (today).

The parameters π_0 and π_1 related to the probability to detect a positive case by testing are estimated off-line.

Figure 3 shows the SMC estimate of the 7-day-average daily reproduction number $R(t)$ from the start of the epidemic in Norway and until today. In the figure we plot the 95% credibility interval and quantiles of the estimated posterior distribution of $R(t)$.

1.1 National SMC-model: Estimated daily reproduction numbers

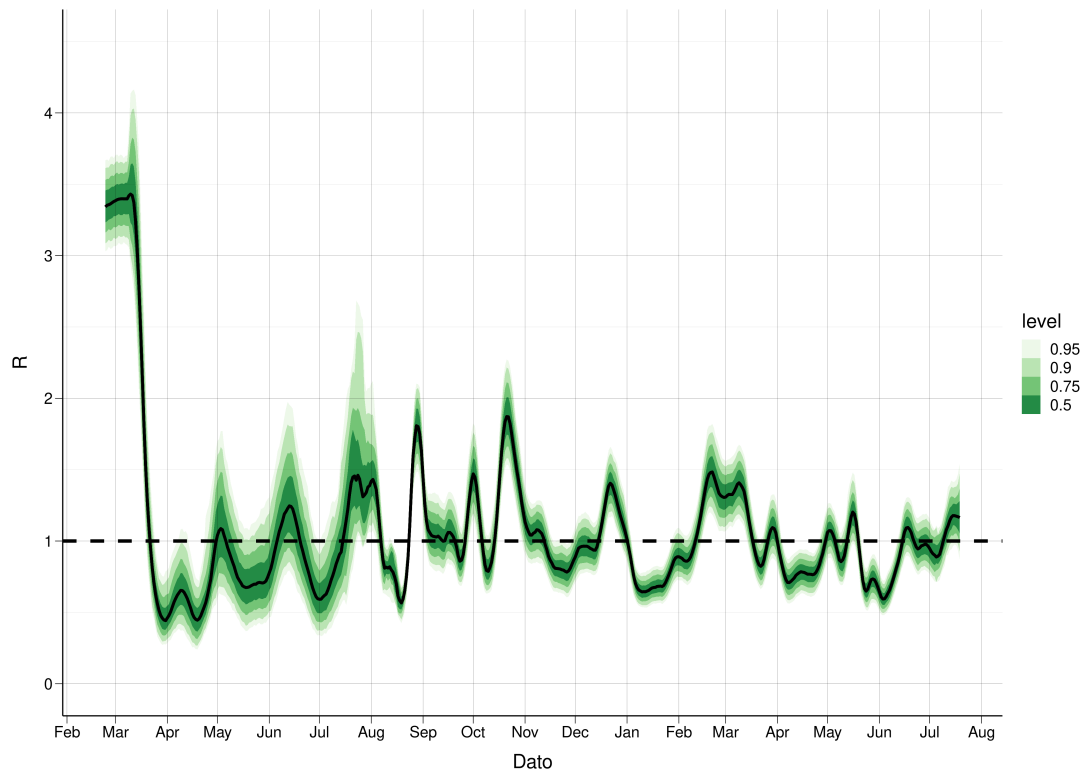


Figure 3: $R(t)$ estimates using a Sequential Monte Carlo approach calibrated to hospitalisation incidence and test data. The large uncertainty during the last 7 days reflects the lack of available data due to the transmission delay, test delay, time between symptoms onset and hospitalisation. The green band shows the 95% posterior credibility interval. As we use test data only from 1 August, the credibility interval becomes more narrow thereafter.

2 National estimate of cumulative (total) number of infections

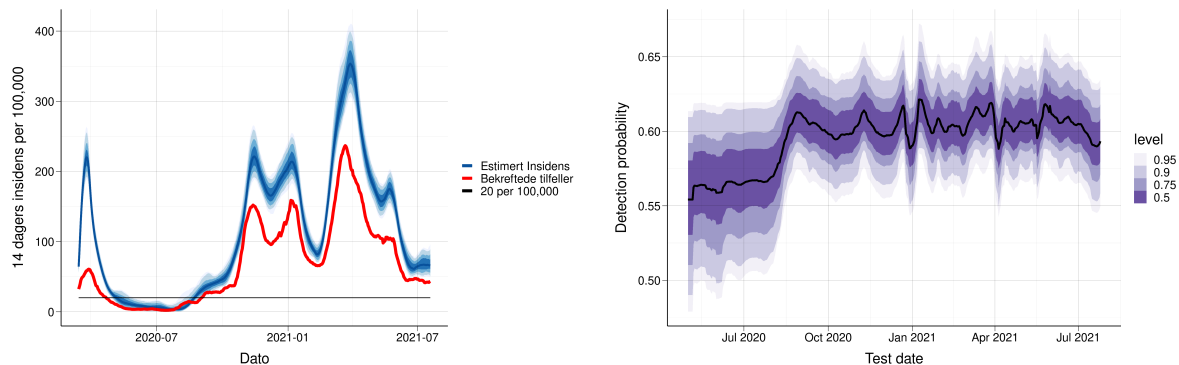
The national changepoint model estimates the total number of infections and the symptomatic cases that have occurred (Table 2).

Figure 4a shows the modelled expected daily incidence (blue) and the observed daily number of laboratory-confirmed cases (red). When simulating the laboratory-confirmed cases, we also model the detection probability for the infections (both symptomatic, presymptomatic and asymptomatic), Figure 4b. There are two differences between this estimate of the detection probability and the previous one provided in figure 4a. In figure 4b, we calibrate our model to the true number of positive cases, instead of using the test data directly. Furthermore, in figure 4a we use a parametric model to estimate the detection probability that depends on the true total number of tests performed.

Table 2: Estimated cumulative number of infections, 2021-07-25

Region	Total	No. confirmed	Fraction reported	Min. fraction
Norway	235963 (215723; 258219)	134775	57%	52%

Fraction reported=Number confirmed/number predicted; Minimal fraction reported=number confirmed/upper CI



(a) Number of laboratory-confirmed cases vs model-based estimated number of new infected individuals
(b) Estimated detection probability for an infected case per calendar day

Figure 4

3 National 3-week predictions: Prevalence, Incidence, Hospital beds and Ventilator beds

The national changepoint model estimates the prevalence and daily incidence of infected individuals (asymptomatic, presymptomatic and symptomatic) for the next three weeks, aggregated to the whole of Norway (table 3). In addition, the table shows projected national prevalence of hospitalised patients (hospital beds) and prevalence of patients receiving ventilator treatment (ventilator beds). The projected epidemic and healthcare burden are illustrated in figure 5.

Table 3: Estimated national prevalence, incidence, hospital beds and ventilator beds. Median/Mean (CI)

	1 week prediction (Aug 01)	2 week prediction (Aug 08)	3 week prediction (Aug 15)
Prevalence	1746/1526 (711-3571)	1751/1381 (541-4356)	1796/1296 (398-5312)
Daily incidence	281/233 (95-636)	283/218 (66-758)	294/206 (49-954)
Hospital beds	21/21 (11-37)	21/20 (8-39)	21/19 (7-45)
Ventilator beds	4/4 (1-9)	4/4 (1-10)	4/4 (0-11)

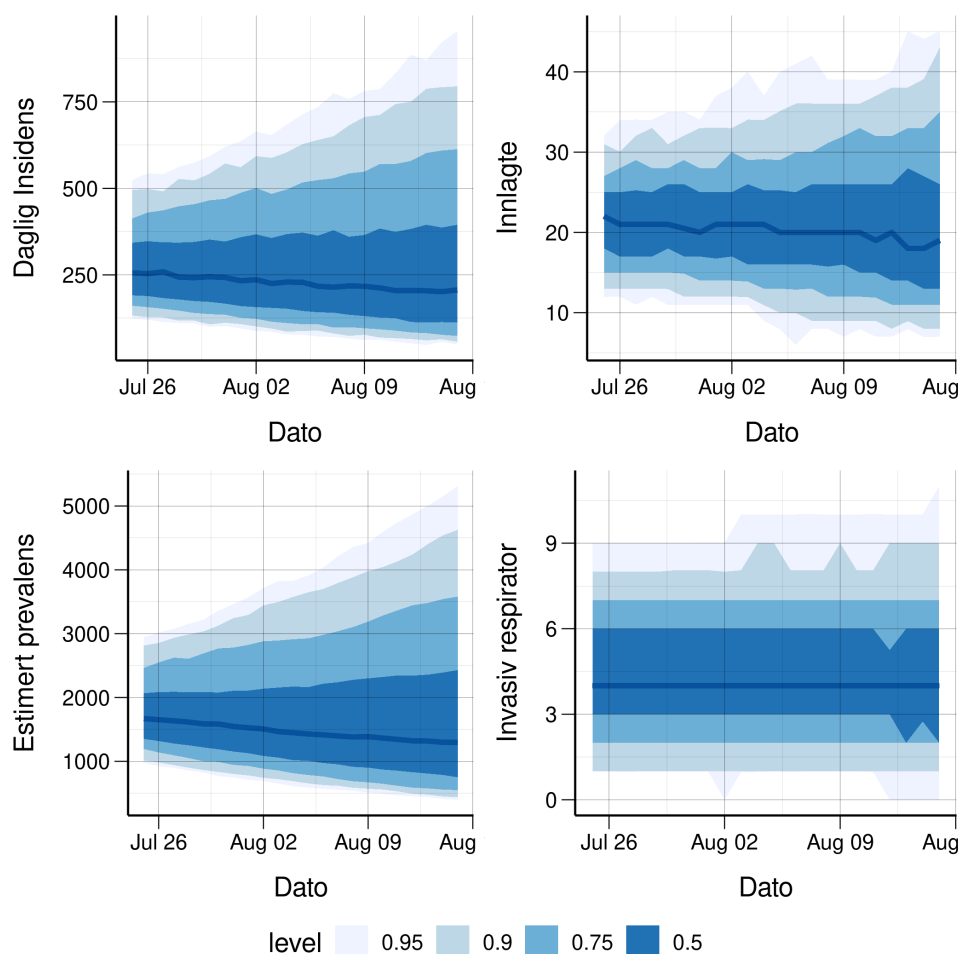


Figure 5: National 3 week predictions for incidence (top left), prevalence (bottom left), hospital beds (top right) and ventilator beds (bottom right)

4 National long-term scenarios with vaccination plans and future interventions: Infections, hospitalisations and ventilator treatments (updated 30th June 2021)

We present long-term scenarios from the individual-based model with vaccination including the vaccines from Pfizer and Moderna, which are currently in the programme. In the model, the vaccines are offered to everyone 18 years or older, as vaccination of 16- and 17-year olds has not yet been finally decided. We present results with a seasonal effect of 50%. The seasonal effect is implemented by varying the transmission rate in accordance with the mean daily temperature for Norway; hence, the transmission rate varies by 50% between the coldest and warmest day during the year. We do not take into account any potential increase in transmissibility or severity due to the introduction of the Delta variant, which is believed to be gradually taking over in the coming months.

We use data from the Norwegian Immunisation Registry (SYSVAK) on the number of vaccinations carried out up until 11th July 2021¹. Vaccine deliveries in the future are based on the Norwegian Institute of Public Health's realistic ("nøktern") scenario, last updated 18th June 2021. The roll-out accounts for regional prioritisation with 45% additional vaccines to 24 municipalities: Oslo, Halden, Moss, Sarpsborg, Fredrikstad, Drammen, Indre Østfold, Råde, Vestby, Nordre Follo, Ås, Frogn, Bærum, Asker, Rælingen, Enebakk, Lørenskog, Lillestrøm, Nittedal, Gjerdrum, Ullensaker, Eidsvoll, Nannestad, and Lier.

We assume regional differences in the reproduction number between municipalities by estimating a scaling factor for the reproduction number in each municipality. The scaling factor is calculated from the local proportion of the population who has tested positive, compared to the national one. The initial conditions in the municipalities are set following the results of the regional changepoint model. The simulations until the end of March 2022 are based on the national reproduction number (Table 1) from the national changepoint model, adjusted per municipality as described above. The long-term scenario results are based on 100 simulations and account for stochasticity within the IBM model; however, the uncertainty in the changepoint models is not accounted for, neither the uncertainty in the estimated reproduction number, nor the uncertainty in the initial conditions.

4.1 Scenarios and how to interpret them

The future course of the epidemic will depend on the national and local control measures that the authorities impose to curb the transmission in the current and future waves of the epidemic. In addition, the epidemiological situation is highly uncertain. Therefore, *the scenarios shown are not predictions* but are the modelled outcomes of a specific set of assumptions about the epidemic and how the government and local authorities are assumed to act. We present results from two different scenarios:

Constant Scenario: In this scenario, we assume that the national vaccine roll-out continues as planned and that the current epidemiological situation remains unchanged. In this scenario, the epidemic will evolve according to the current reproduction number, and the government will make no changes to the current interventions. We use three different assumptions for the national reproduction number: $R \in [0.9, 1, 1.1]$. This is done to account for the spread in the estimates of R from the national changepoint model (0.9), SMC model (1.18) and EpiEstim model (1.1).

Controlled Scenario: In this alternative scenario, we assume that the national vaccine roll-out will continue as planned. We assume the national reproduction number of $R = 1$ on 26th July. However, the government chooses to actively control the reopening of the society in relation to the prevalence of hospital admissions at a given time. We set an **upper** threshold of 200 admitted patients nationally. If this threshold is reached, contact-reducing measures are triggered. In the model, we assume that the contact-reducing measures will reduce the reproduction number to 0.8. We also include a **lower** threshold of 50 hospital admissions nationally. If this threshold is reached, a lowering of contact-reducing measures is triggered. In this case, increase the reproduction number in the model to 1.2. We also have a **middle** threshold of 125 hospital admissions nationally. If the prevalence of hospital admissions is between 50

¹We use a two-week period from 12th July to 26th July to initialize the model – results here are shown starting from 26th July.

4.2 Constant Scenario

and 125, we update the reproduction number to 1.05; while if the prevalence of hospital admissions is between 125 and 200, we update the reproduction number to 1.0. The number of hospital admissions is evaluated every two weeks to simulate a gradual reopening or closing, and if needed, the reproduction number is changed. We implement the corrections at a regional level by calculating regional threshold values per inhabitants based on the three national threshold levels above. Note that these thresholds which trigger reopening and contact-reducing measures in the simulations have been arbitrarily chosen as an illustration of a controlled scenario, and we could also have used different numbers.

In a controlled scenario, we need to make assumptions on how much we can reopen compared to the current level and what contact rate that corresponds to "normal" social contact without intervention measures. We enforce a maximum reproduction number for each municipality within the model – the model is not allowed to increase the contact rate above this threshold, even though hospital prevalence allows. The threshold is estimated based on an assumed basic reproduction number for the epidemic of $R_0 \in [2, 2.33, 2.66]$. The R_0 is multiplied by a factor of 1.5 to take into account the higher transmissibility of the B.1.1.7 strain that is dominating in Norway, bringing the range of R values used for our controlled scenarios to $R \in [3, 3.5, 4]$.

Both scenarios are made given some simplifying assumptions:

- The vaccine uptake is assumed to be 90% in all age groups 18 years old and above and we assume full adherence to the vaccination schedule.
- We use modest assumptions on the vaccine efficacy (VE). For the vector vaccines: VE asymp (1. and 2. dose) 22%; VE symp (1. and 2. dose) 70%; VE sev (1. and 2. dose) 80%. For the mRNA vaccines: VE asymp (1. and 2. dose) 55%, 77%; VE symp (1. and 2. dose) 71%, 91%; VE sev (1. and 2. dose) 78%, 94%. People who are vaccinated and get infected are assumed to transmit 65% less than those who are not vaccinated.
- We assume the following total number of imported cases per month (the imported cases are then evenly distributed over the days of the month): June 1125; July 800; August 500; September 205; October 152; November 91; December 72; January through March 2022 100.
- We assume a twelve-week interval between the first and second mRNA vaccine doses.
- No waning immunity after infection or vaccination is assumed.
- We assume that the vaccines are effective against all circulating variants.

More information about the IBM can be found in the reports *Folkehelseinstituttets foreløpige anbefalinger om vaksinasjon mot covid-19 og om prioritering av covid-19-vaksiner, versjon 2 15. desember* and *Modelleringsrapport, delleveranse Oppdrag 8: Effekt av regional prioritering av covid-19 vaksiner til Oslo eller Oslo Viken samt vaksinenes effekt på transmisjon for epidemiens videre utvikling*, available online at <http://www.fhi.no>. The order of priority for age and risk groups can be found at <https://www.fhi.no/en/id/vaccines/coronavirus-immunisation-programme/who-will-get-coronavirus-vaccine-first/>. A detailed description of the controlled scenario's assumptions is provided in recent modelling reports, to be published shortly.

4.2 Constant Scenario

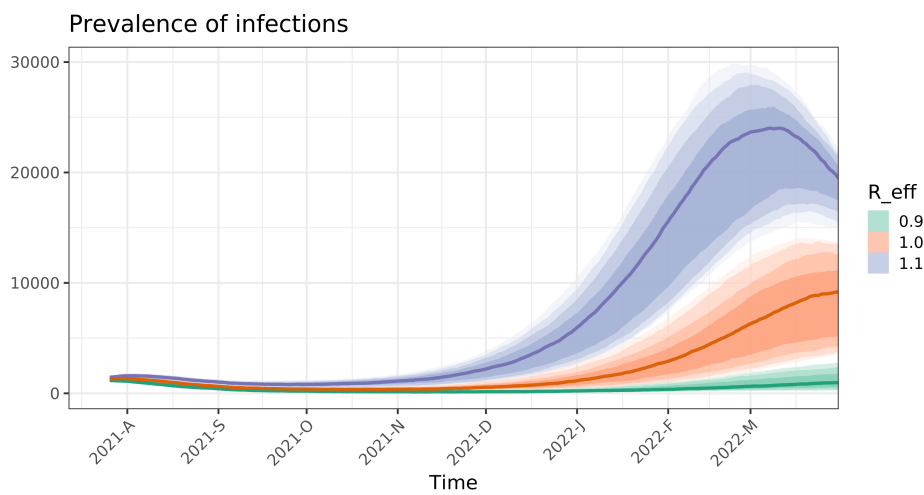
We present scenarios until the end of March 2022 from our IBM with vaccination, showing expected prevalence (Figure 6a), hospital beds (Figure 6b) and ventilator beds (Figure 6c).

Depending on the assumed epidemiological situation (R ranging from 0.6 to 1) and assuming a seasonal effect of 50%, the epidemic exhibits a peak in late June in the case of $R = 1$, else a steady decline, as seen in Figure 6. None of the scenarios exceed a surge capacity need of **500 ICU ventilator beds** (Table 4).

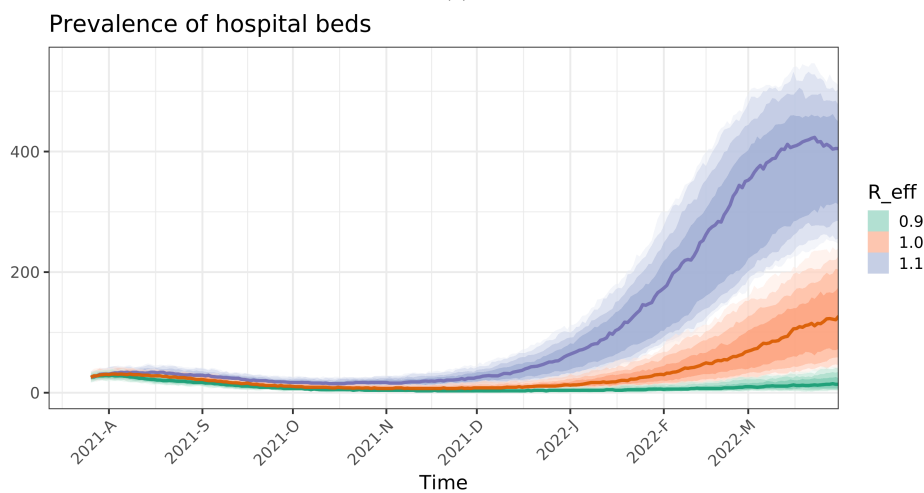
4.2 Constant Scenario

Table 4: Estimated total infections, admissions and ventilator treatments until 31st March 2022

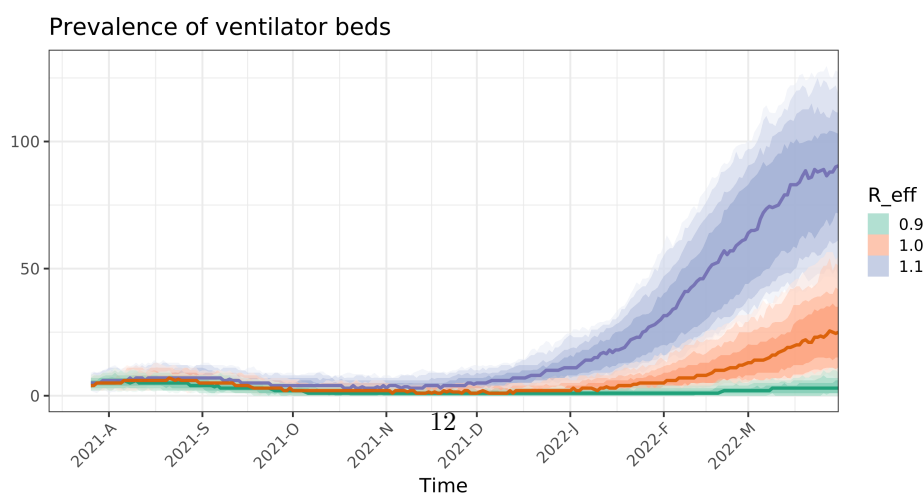
Total	Reproduction number		
	0.9	1	1.1
Infections	23995 (14564-33427)	108017 (63142-152893)	344664 (260637-428691)
Hospitalisations	332 (244-421)	1110 (682-1539)	3645 (2672-4617)
Ventilator treatments	42 (29-55)	135 (81-190)	453 (328-578)



(a)



(b)



4.3 Controlled Scenario

4.3 Controlled Scenario

We next present long-term projections using the controlled scenarios described above, showing expected prevalence (Figure 7a), hospital beds (Figure 7b) and ventilator beds (Figure 7c).

Figure 8 shows at a national level the relative average contact rate compared to an open society with “normal” social interaction. To estimate the level of contact corresponding to a fully open community, we first calculate the early transmission rate in each region, corresponding to the period before the lockdown in March 2020, from the estimated basic reproduction number, R_0 . We use three different assumptions for R_0 to illustrate the uncertainty.

The transmission rate, the so-called beta parameter, is the product of the contact rate multiplied with the probability of transmission given contact. We can think of the transmission rate as an effective contact rate, relevant to the spread of the SARS-CoV-2 virus.

Note that the reopening is simulated locally and that the degree of reopening may differ in the various regions of the country.

Table 5: Estimated total number of infections, hospitalisations and ventilator treatments until 31st March 2022

Total	Maximum reproduction number		
	3	3.5	4
Infections	331298 (303762-358834)	358911 (327344-390479)	368973 (334259-403687)
Hospitalisations	3756 (3411-4102)	4083 (3687-4479)	4208 (3776-4639)
Ventilator treatm.	472 (426-518)	521 (466-575)	533 (473-594)

Table 5 shows that, in a controlled scenario with hospital admissions as steering parameter, there is an increasing trend in the expected infections and admissions when the maximum reproduction number (i.e. $1.5R_0$) increases. Figure 8 indicates that a continuation of the gradual reopening is possible the coming months. In the scenarios assuming different maximum reproduction number (e.g. 3, 3.5 and 4), full reopening is possible in August and September; however, the model suggests that it will be necessary to implement measures to limit the contact during the autumn and winter; and possibly to reopen again in spring 2022. The reduced contact rate in the last part (January to March) is likely due to time-delay in the response. The hospital level is delayed with respect to the infection incidence curve (Figure 7).

4.3 Controlled Scenario

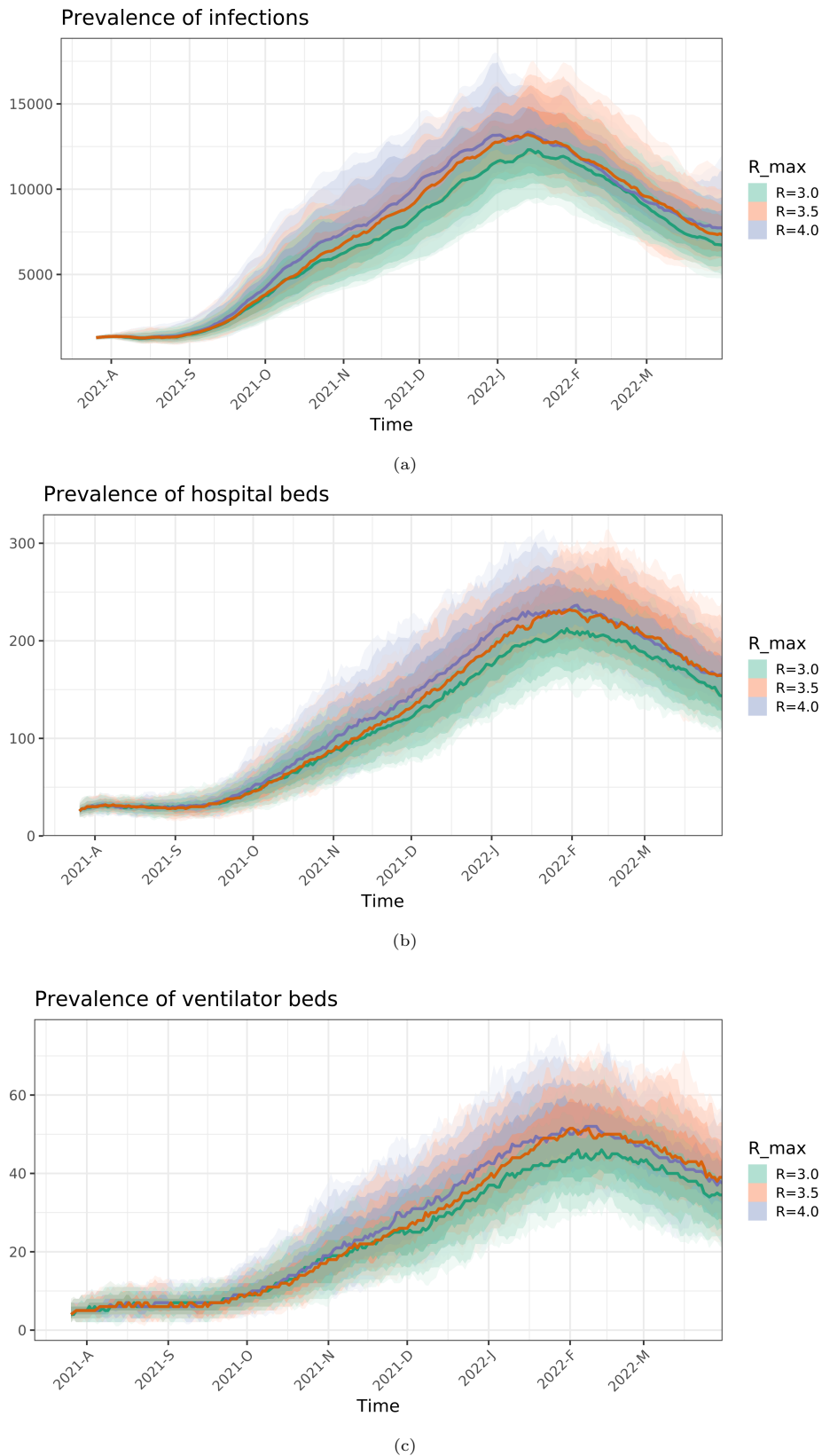


Figure 7: Long-term predictions from the controlled scenario, for prevalence (a), hospital beds (b) and ventilator beds (c). Each color shows the scenario of one maximum reproduction number, 3, 3.5 and 4.

4.3 Controlled Scenario

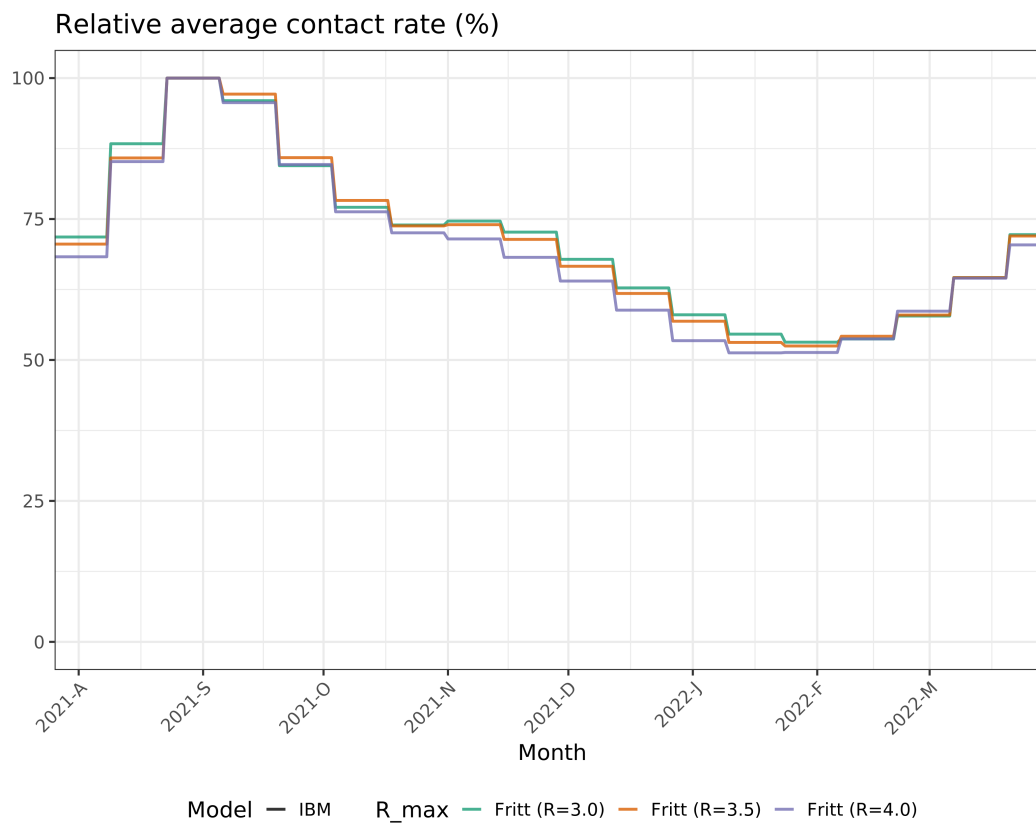


Figure 8: Relative average national contact rate compared to a fully open society using a reopening factor to determine the maximum level of reopening in the controlled scenario. Each line represents one reopening factor and is normalized by its own maximum contact rate. Simulations are made with vaccines from Pfizer and Moderna, assuming the modest ("Nøktern") vaccine delivery schedule. The contact rate is population-weighted average in all municipalities, updated every two weeks to simulate gradual reopening by evaluating the number of hospital admissions.

5 Estimated regional reproduction numbers

Calibration of our regional changepoint model to hospitalisation incidence data and test data leads to the following estimates for current regional reproduction numbers by county (Table 6). A full list of all regional reproduction numbers can be found at the end of the report.

Below we show the estimated daily number of COVID-19 patients admitted to hospital and the estimated daily number of laboratory-confirmed SARS-CoV-2 cases for each county. Model estimates are shown with blue medians and interquartile bands, which are compared to the actual true data, provided in red. The blue bands describe the uncertainty in the calibrated parameters, in addition to the stochastic elements of our model. Last four data points are shown in black as they may be affected by reporting delay.

Table 6: Estimated current regional reproduction numbers

R	Parameter	County	From	Pr(R>1)
0.74 (0.4-1.15)	R14	Oslo	2021-06-10	0.11
0.41 (0.03-0.89)	R13	Rogaland	2021-06-23	0.01
0.61 (0.15-1.08)	R11	Møre og Romsdal	2021-06-05	0.06
0.91 (0.55-1.34)	R13	Nordland	2021-05-27	0.31
1.19 (1.04-1.39)	R13	Viken	2021-06-10	1
0.91 (0.2-1.47)	R14	Innlandet	2021-06-10	0.44
0.55 (0.11-1.11)	R13	Vestfold og Telemark	2021-06-10	0.06
0.45 (0.09-0.84)	R12	Agder	2021-06-05	0
1.9 (1.05-2.82)	R16	Vestland	2021-06-30	0.98
0.98 (0.43-1.37)	R13	Trøndelag	2021-06-10	0.49
0.96 (0.43-1.42)	R14	Troms og Finnmark	2021-06-10	0.46

Mean and 95% credible intervals

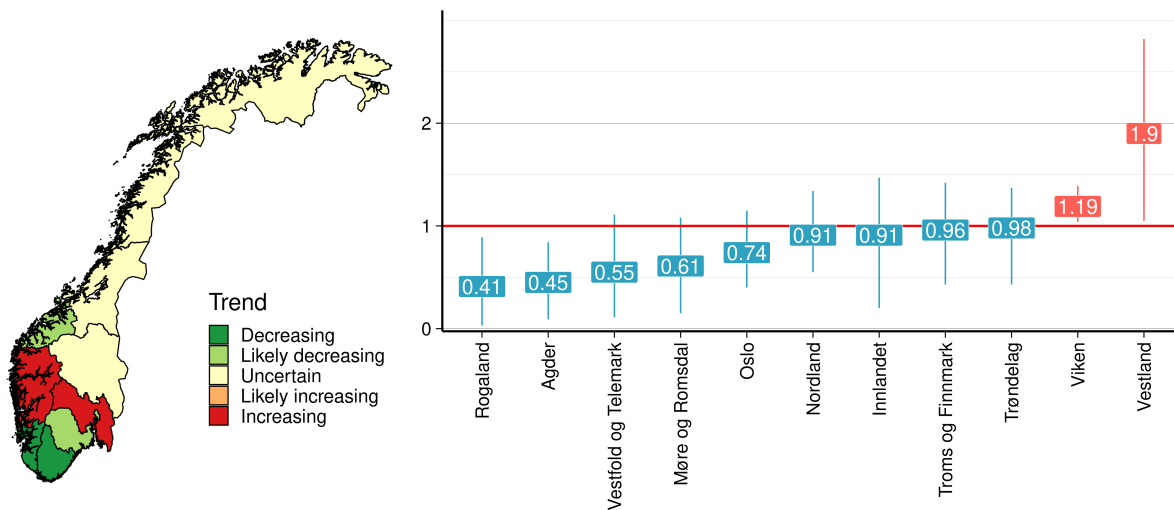
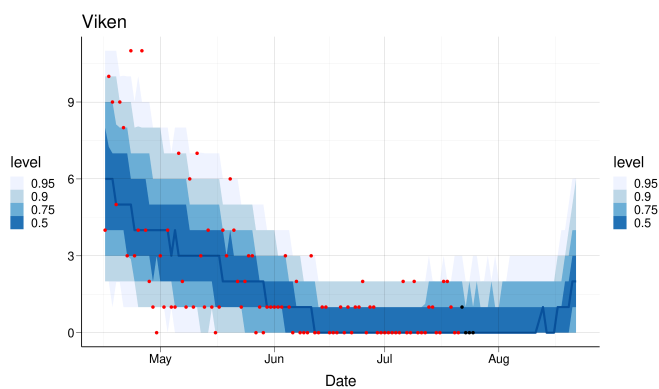
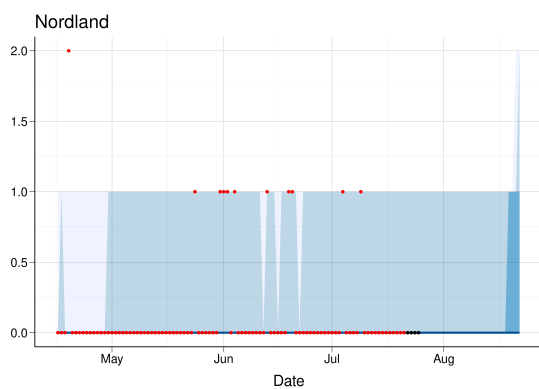
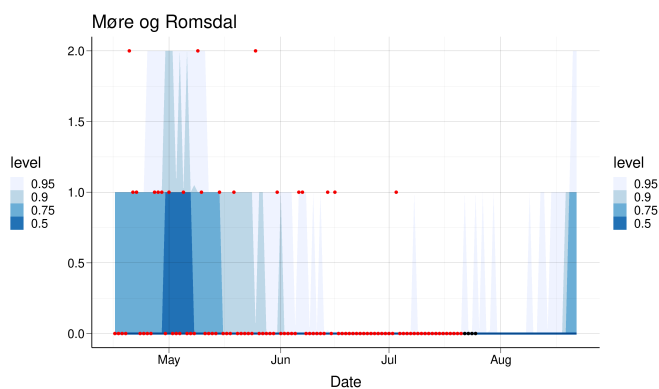
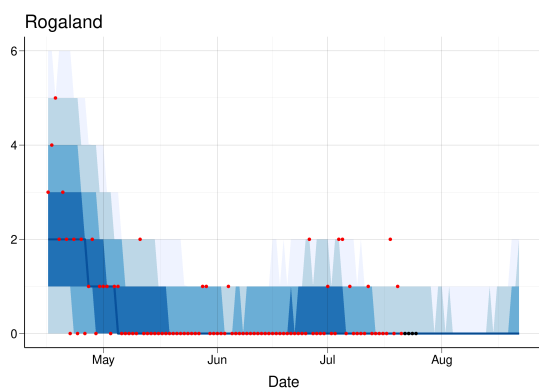
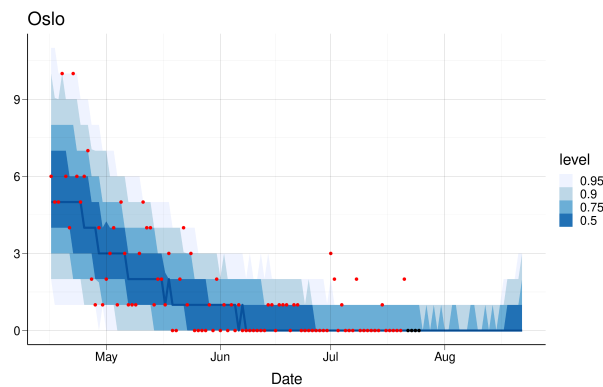
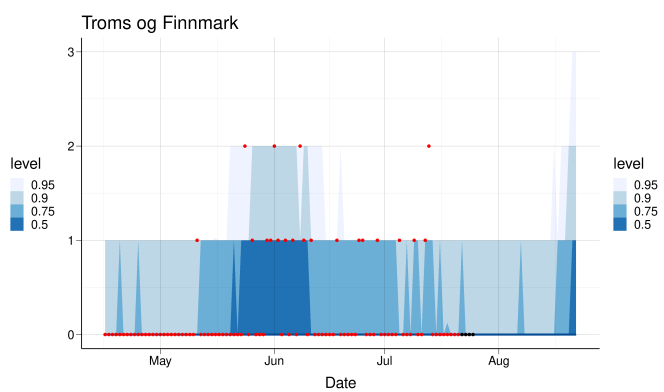
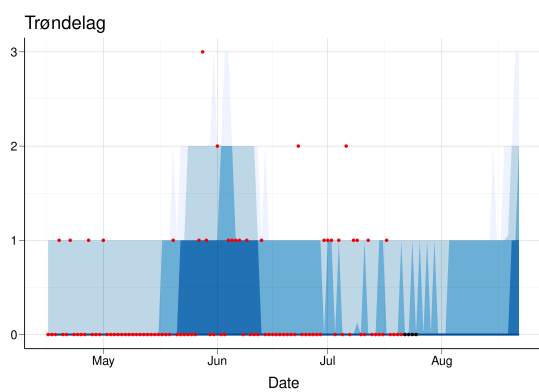
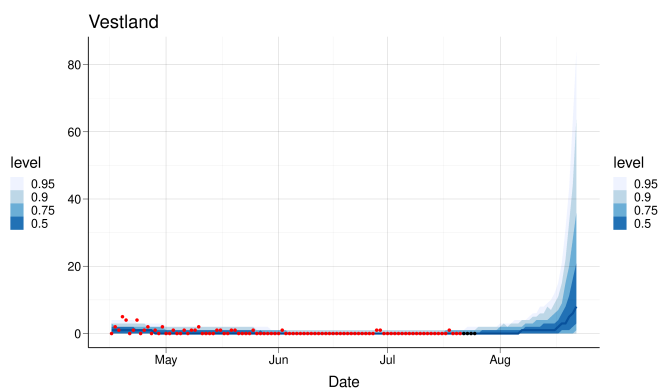
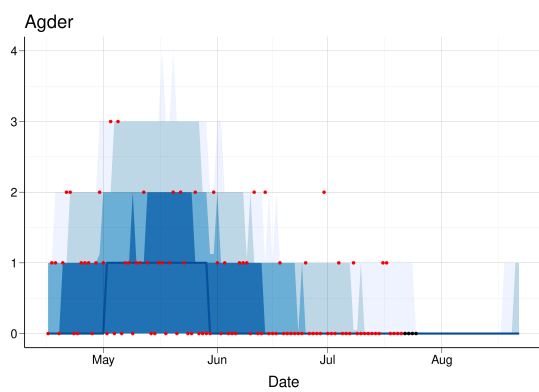
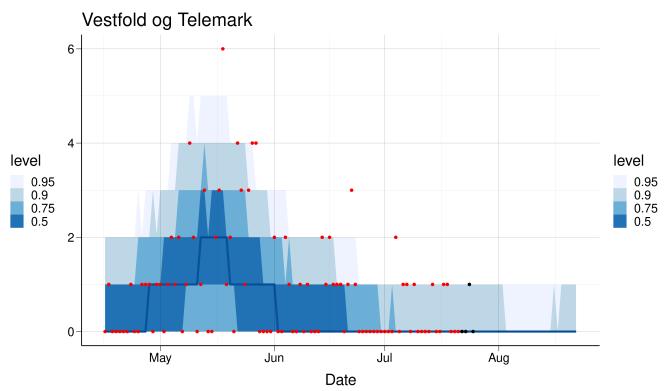
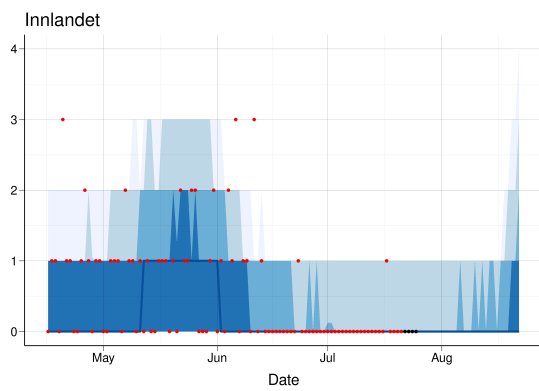


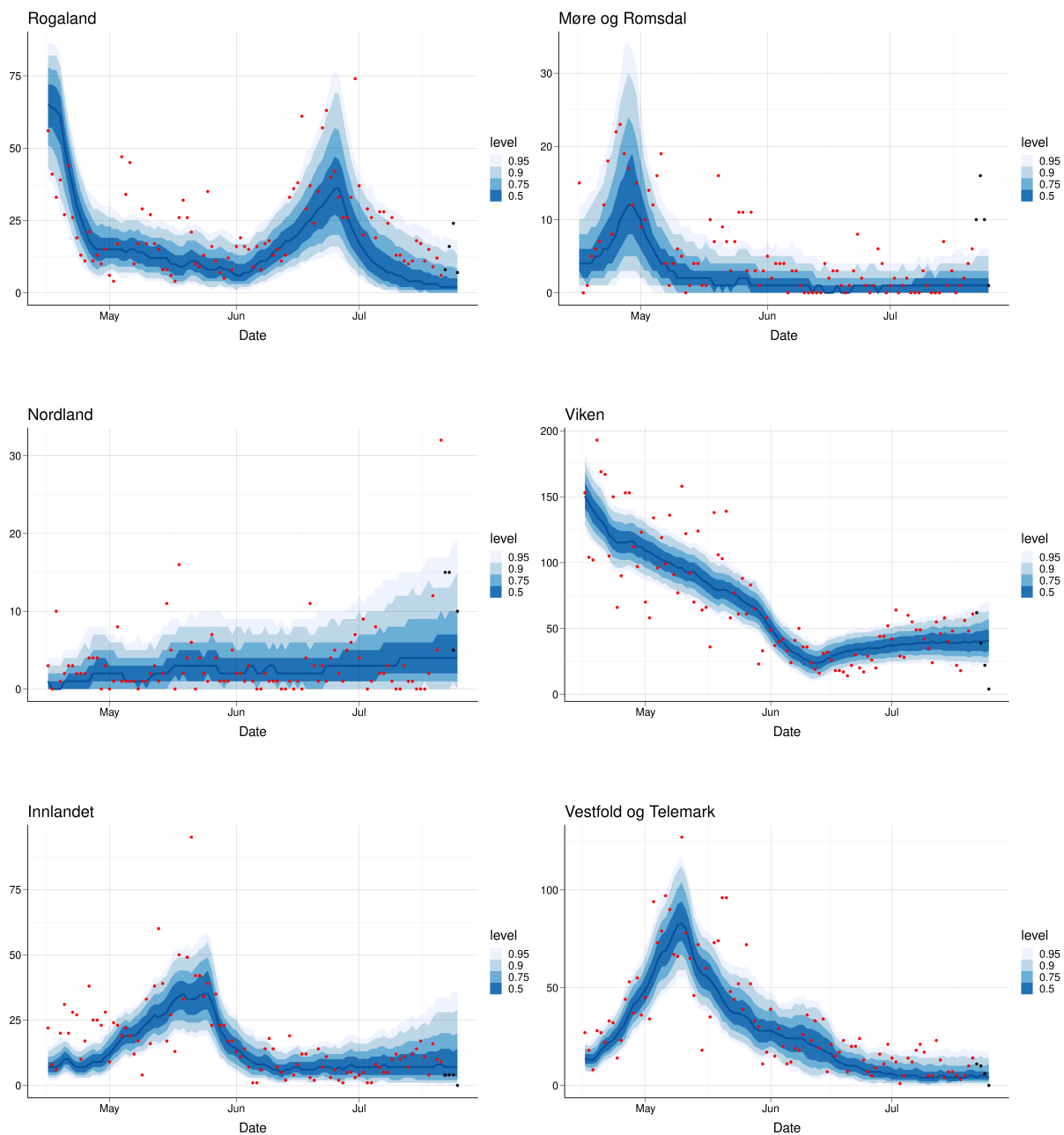
Figure 9: The map shows the direction of the trend in incidence in the counties based on the latest reproduction numbers shown in the other chart. The trend is increasing if the probability that the latest reproduction number is above one is above 95%, the trend is likely increasing if this probability is between 80% and 95%, the trend is uncertain if the probability is between 20% and 80%, the trend is likely decreasing if the probability is between 5% and 20% and is decreasing if the probability that the latest R is above one is less than 5%.

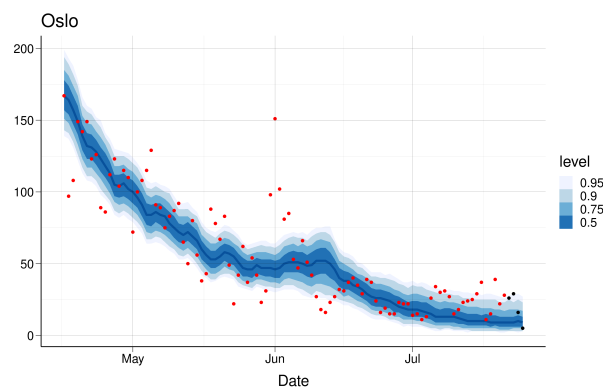
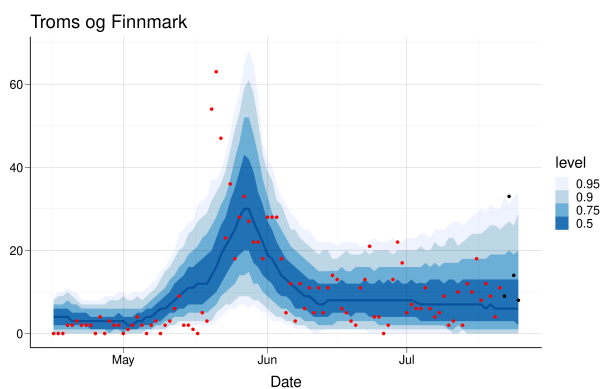
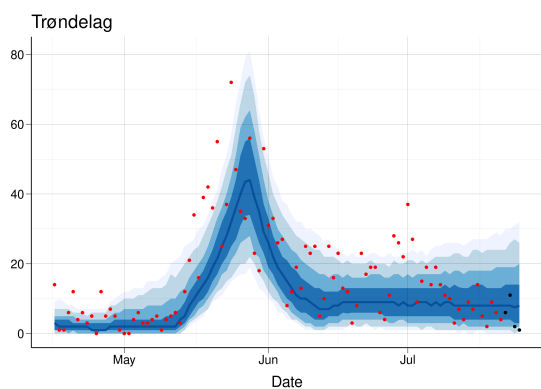
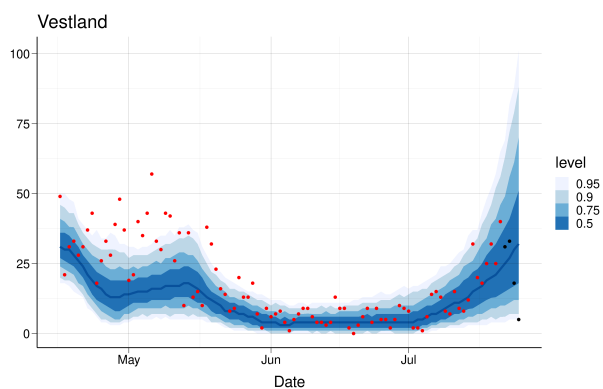
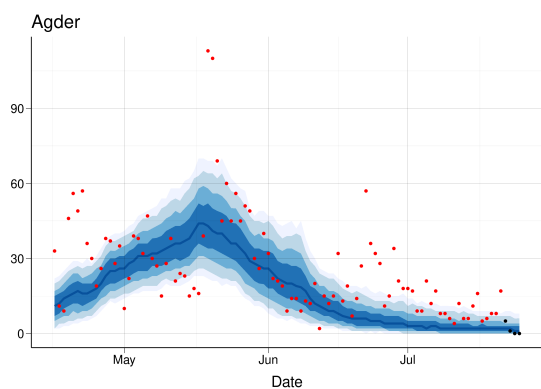
Estimated vs observed hospital incidence and 3 weeks forecast by county:





Estimated and observed lab-confirmed test data by county:





6 Regional 3-week predictions: Cumulative (total) incidence and Prevalence

Below is shown the estimated short-term forecasting of total incidence of infected individuals since 1st of June (2021) (table 7), daily incidence (table 8) and prevalence (table 9) for each county.

Table 7: Estimated cumulative number of infections, 2021-07-25

Region	Total	No. confirmed	Fraction reported	Min. fraction
Oslo	2172 (1507; 3002)	1788	82%	60%
Rogaland	1257 (588; 2316)	1311	100%	57%
Møre og Romsdal	97 (29; 274)	136	100%	50%
Nordland	319 (95; 830)	200	63%	24%
Viken	3025 (2339; 3775)	1963	65%	52%
Innlandet	694 (229; 1487)	421	61%	28%
Vestfold og Telemark	926 (495; 1555)	812	88%	52%
Agder	600 (258; 1262)	823	100%	65%
Vestland	934 (299; 1925)	576	62%	30%
Trøndelag	872 (284; 1719)	797	91%	46%
Troms og Finnmark	791 (159; 1771)	557	70%	31%

Fraction reported=Number confirmed/number predicted; Minimal fraction reported=number confirmed/upper CI

Table 8: Predicted incidence per day: Median/Mean (CI)

Region	1 week prediction (01 Aug)	2 weeks prediction (08 Aug)	3 weeks prediction (15 Aug)
Agder	1/2 (0-8)	1/2 (0-9)	3/4 (0-13)
Innlandet	13/20 (1-82)	12/21 (1-99)	14/24 (1-114)
Møre og Romsdal	1/2 (0-8)	2/3 (0-11)	5/7 (0-30)
Nordland	5/8 (0-30)	6/9 (1-36)	8/12 (1-41)
Oslo	14/17 (5-47)	15/17 (4-51)	18/22 (5-57)
Rogaland	3/5 (0-24)	4/6 (0-26)	7/12 (0-50)
Troms og Finnmark	9/15 (0-63)	9/16 (0-72)	9/18 (1-87)
Trøndelag	13/18 (0-66)	13/20 (1-77)	15/23 (1-90)
Vestfold og Telemark	3/6 (0-24)	3/6 (0-29)	4/6 (0-26)
Vestland	104/141 (11-447)	180/292 (12-1134)	309/605 (12-2872)
Viken	71/74 (38-133)	76/81 (36-157)	83/91 (39-188)

Table 9: Predicted prevalence. Number of infectious individuals (asymptomatic plus pre-symptomatic plus symptomatic) per day. Median/Mean and 95 perc. CI for three weeks prediction.

Region	01 Aug	08 Aug	15 Aug	low CI, 15 Aug	high CI, 15 Aug
Agder	9/13	13/17	26/38	6	132
Innlandet	78/116	76/126	80/142	9	685
Møre og Romsdal	7/11	11/16	25/36	2	144
Nordland	28/43	31/48	38/57	7	207
Oslo	87/106	75/96	80/100	32	304
Rogaland	13/28	10/23	10/24	0	128
Troms og Finnmark	55/88	55/98	63/113	7	502
Trøndelag	82/110	88/124	103/150	12	534
Vestfold og Telemark	19/33	17/31	19/33	4	163
Vestland	514/669	911/1374	1534/2840	75	12860
Viken	433/451	461/493	500/550	257	1067

7 Regional 3-week predictions: Hospital beds and ventilator beds

Below is shown the estimated short-term forecasting of expected hospital prevalence (table 10) and patients on ventilator treatment for each county (table 11).

Table 10: Number of hospitalisation beds occupied by Covid-19 patients: Median/Mean (CI)

Region	1 week prediction (01 Aug)	2 weeks prediction (08 Aug)	3 weeks prediction (15 Aug)
Agder	0/0 (0-3)	0/0 (0-2)	0/0 (0-2)
Innlandet	0/1 (0-4)	1/1 (0-5)	1/1 (0-7)
Møre og Romsdal	0/0 (0-2)	0/0 (0-2)	0/0 (0-3)
Nordland	0/1 (0-3)	0/1 (0-3)	0/1 (0-3)
Oslo	1/1 (0-6)	1/1 (0-5)	1/1 (0-6)
Rogaland	0/1 (0-5)	0/1 (0-4)	0/1 (0-3)
Troms og Finnmark	0/1 (0-6)	0/1 (0-6)	0/1 (0-6)
Trøndelag	1/1 (0-6)	1/1 (0-6)	1/1 (0-7)
Vestfold og Telemark	0/1 (0-4)	0/1 (0-3)	0/0 (0-3)
Vestland	2/3 (0-9)	3/5 (0-17)	7/10 (0-40)
Viken	5/5 (1-11)	5/5 (1-13)	5/5 (1-14)

Table 11: Number of ICU beds occupied by Covid-19 patients: Median/Mean (CI)

Region	1 week prediction (01 Aug)	2 weeks prediction (08 Aug)	3 weeks prediction (15 Aug)
Agder	0/0 (0-1)	0/0 (0-1)	0/0 (0-1)
Innlandet	0/0 (0-1)	0/0 (0-1)	0/0 (0-2)
Møre og Romsdal	0/0 (0-1)	0/0 (0-1)	0/0 (0-1)
Nordland	0/0 (0-1)	0/0 (0-1)	0/0 (0-1)
Oslo	0/0 (0-2)	0/0 (0-2)	0/0 (0-2)
Rogaland	0/0 (0-2)	0/0 (0-1)	0/0 (0-1)
Troms og Finnmark	0/0 (0-2)	0/0 (0-2)	0/0 (0-2)
Trøndelag	0/0 (0-2)	0/0 (0-2)	0/0 (0-2)
Vestfold og Telemark	0/0 (0-1)	0/0 (0-1)	0/0 (0-1)
Vestland	0/0 (0-2)	0/1 (0-3)	1/1 (0-6)
Viken	1/1 (0-3)	1/1 (0-3)	1/1 (0-4)

8 14-day trend analysis of confirmed cases and hospitalisations by county

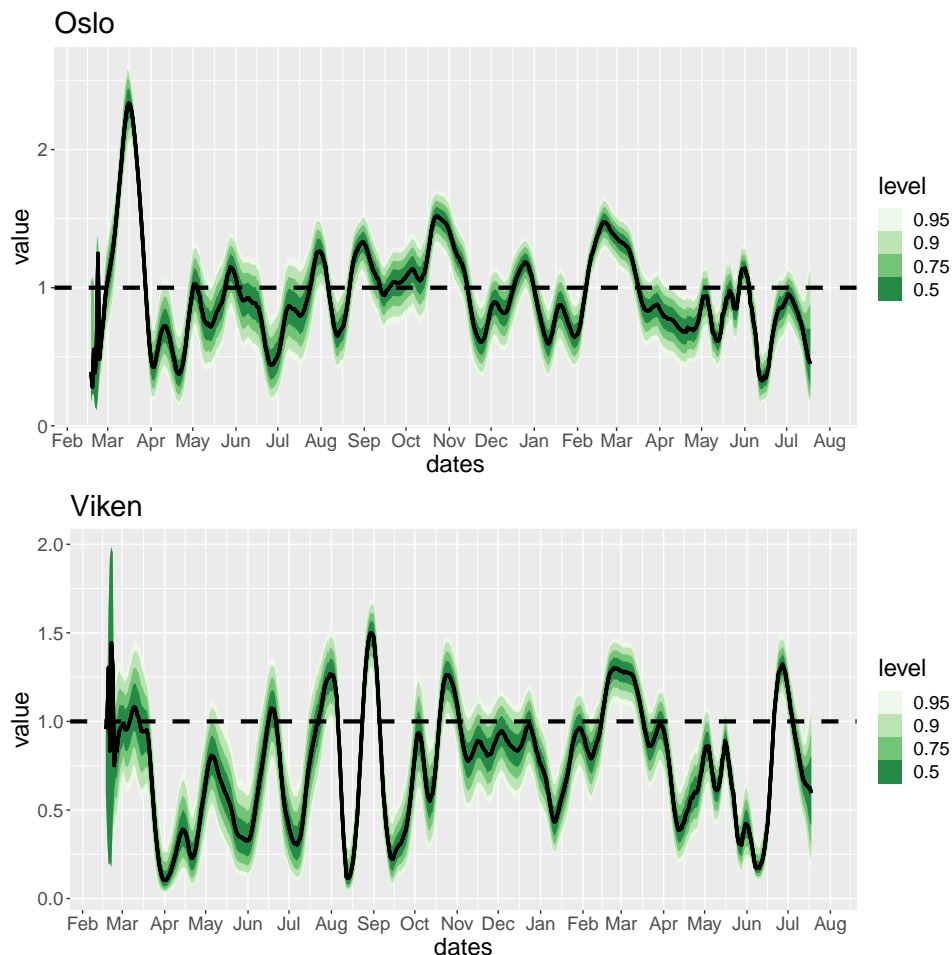
To estimate recent trends in hospitalisation and number of positive tests, we present results in table 12 based on a negative binomial regression where we account for weekend effects. We exclude the last three days to avoid problems of reporting delay and fit the model using data from 17 days to 3 days before the current date. We fit a separate trend model for confirmed cases and for hospital incidence. We only fit a trend model if there has been more than 5 cases or hospitalisations in the 14-day period.

Table 12: Trend analysis for the last 14 days

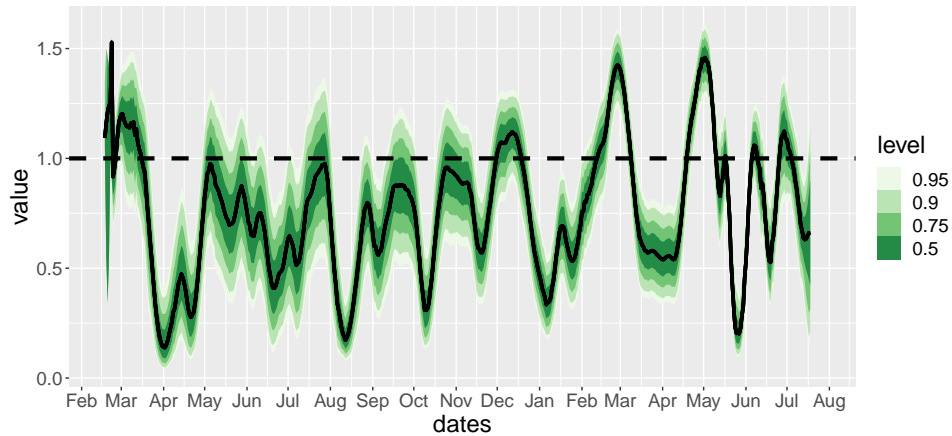
County	Average daily increase last 14 days		Doubling Time (days)	
	Hospitalisations	Cases	Hospitalisations	Cases
Agder	Not enough data	-8.1 (-11.3, -4.8) %	Not enough data	-8.2 (-5.8, -14.1)
Innlandet	Not enough data	9.2 (2.6, 16.5) %	Not enough data	7.9 (27.4, 4.5)
Møre og Romsdal	Not enough data	-10.3 (-19.4, -0.9) %	Not enough data	-6.4 (-3.2, -78)
Nordland	Not enough data	-9.6 (-16.5, -2.6) %	Not enough data	-6.8 (-3.8, -26.5)
Norge	3.9 (-4.9, 13.7) %	-1.4 (-2.5, -0.3) %	18.1 (-13.9, 5.4)	-48.7 (-26.9, -256.7)
Oslo	Not enough data	3.3 (0.3, 6.4) %	Not enough data	21.6 (276.6, 11.2)
Rogaland	Not enough data	-4.9 (-9, -0.6) %	Not enough data	-13.8 (-7.3, -115.4)
Troms og Finnmark	Not enough data	-5.9 (-11.6, 0.1) %	Not enough data	-11.4 (-5.6, 1047.2)
Trøndelag	Not enough data	-5.9 (-9.1, -2.7) %	Not enough data	-11.3 (-7.3, -25.2)
Vestfold og Telemark	Not enough data	0.5 (-3.3, 4.4) %	Not enough data	142.7 (-21, 16.2)
Vestland	Not enough data	7 (0.9, 13.5) %	Not enough data	10.3 (74, 5.5)
Viken	Not enough data	1.4 (-0.6, 3.5) %	Not enough data	49.5 (-109.2, 20.2)

9 Regional SMC-model: Estimated daily reproduction numbers

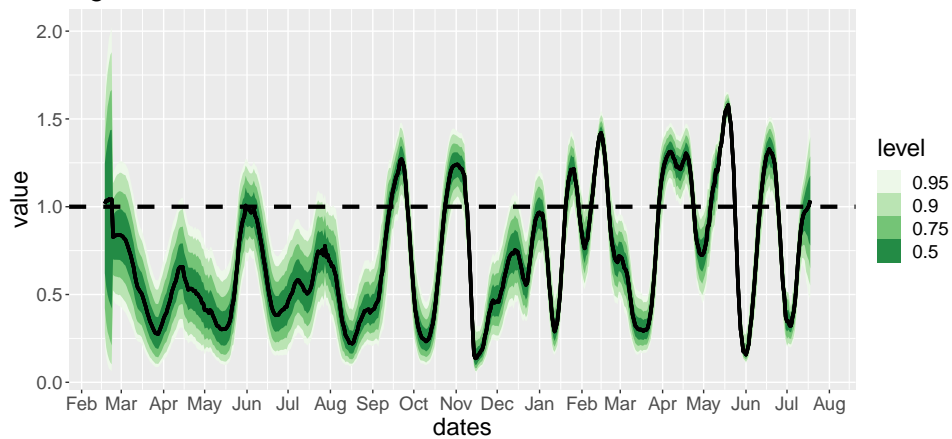
As we do for the national SMC-model (section 1.1), we now allow for a different reproduction number for each day and for each county. The model uses the daily number of new admissions to hospital and the daily number of positive and negative lab-confirmed tests for each county, to estimate all parameters. Because of the time between infection and the possibility to be detected as positive by a test, and because of a delay in reporting tests, the data contain information on the transmissibility until a week before the end of the data used. We therefore stop the estimates one week ago. As for the national SMC model, the figures below shows the SMC estimate of the 7-day-average daily reproduction number for each fylke. In the figure we plot the 95% credibility interval and quantiles of the estimated posterior distribution of the reproduction numbers. For some counties, uncertainty is large towards the most recent time, because there are very few data and possibly reporting delays which are different in each county.



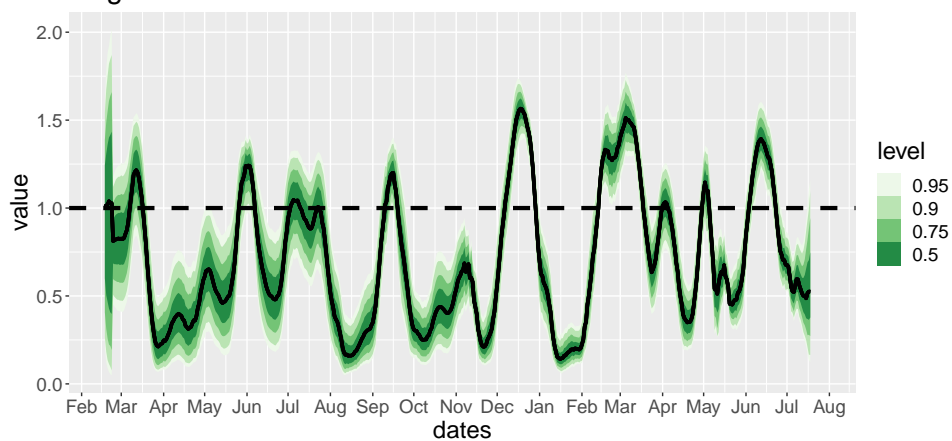
Vestfold og Telemark

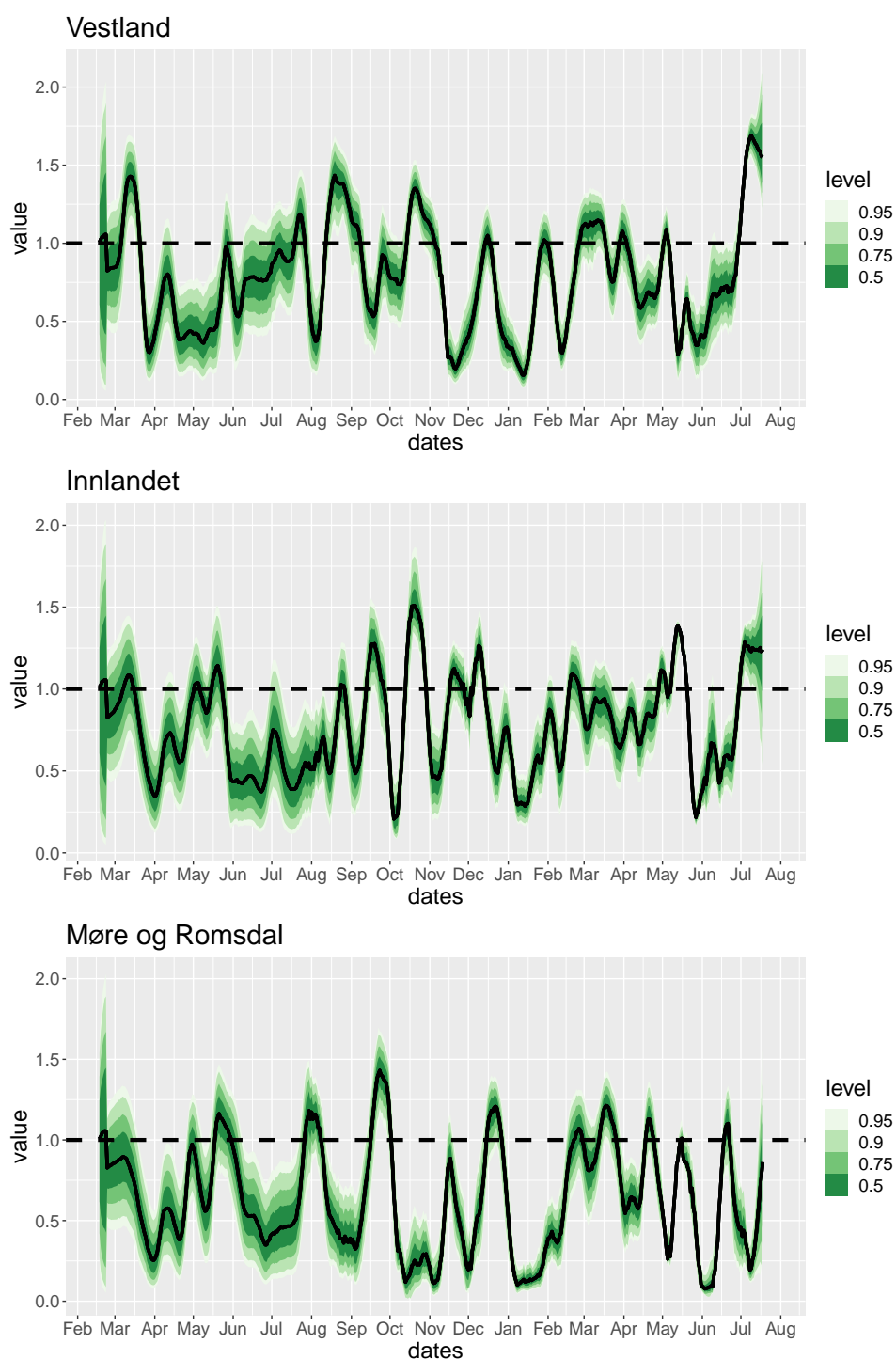


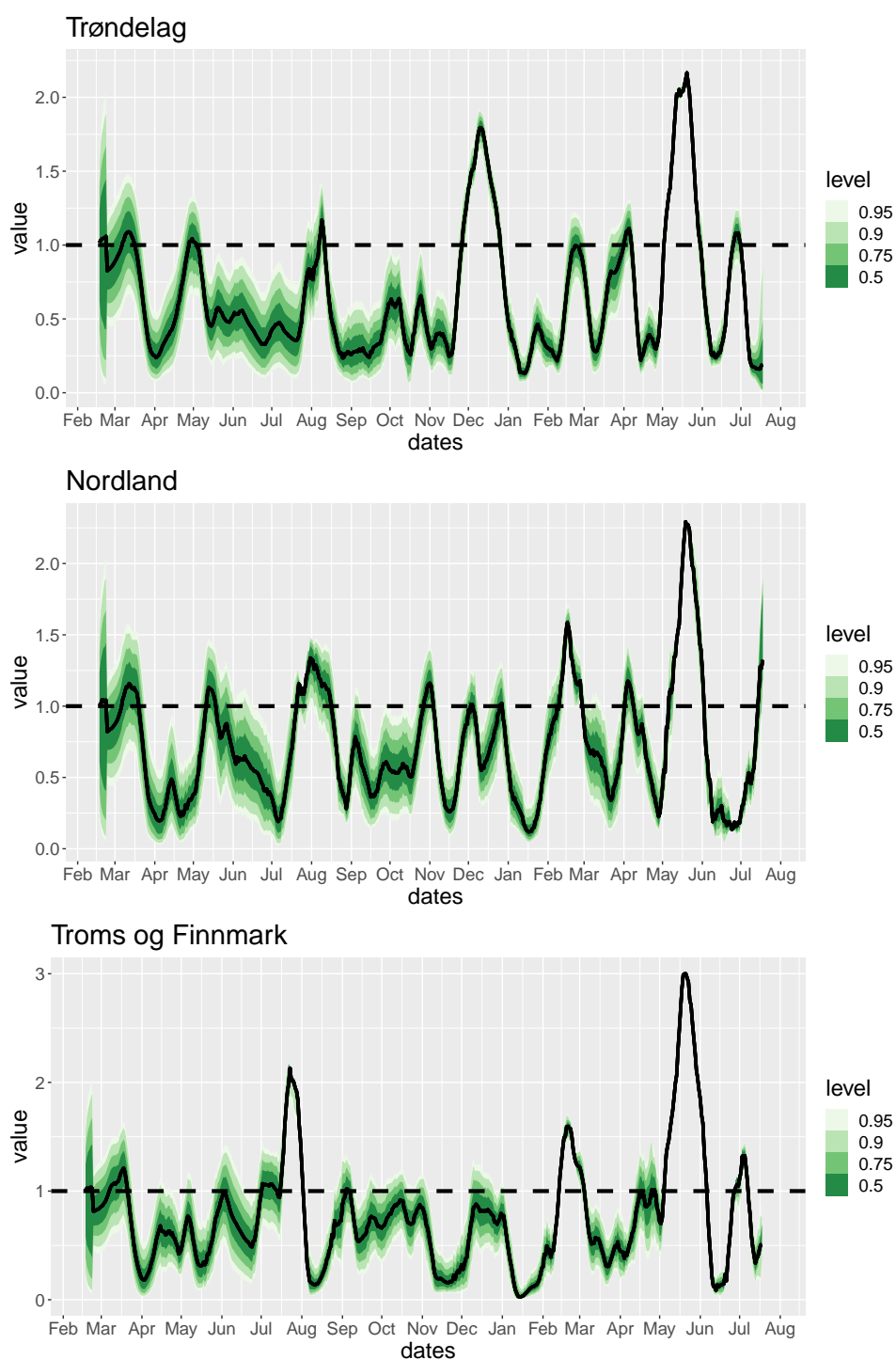
Agder



Rogaland







	Median	5%	95%	Prob>1
Oslo	0.449	0.158	1.125	0.078
Rogaland	0.525	0.164	1.095	0.094
Møre og Romsdal	0.862	0.373	1.346	0.343
Nordland	1.324	1.183	1.886	1.000
Viken	0.596	0.218	1.073	0.086
Innlandet	1.240	0.543	1.774	0.741
Vestfold og Telemark	0.661	0.211	1.147	0.152
Agder	1.035	0.552	1.397	0.528
Vestland	1.551	1.228	2.086	0.997
Trøndelag	0.191	0.020	0.849	0.012
Troms og Finnmark	0.510	0.354	0.753	0.004

Table 13: Regional estimates at July 18

10 Mobility

Number of trips out from each municipality during each day is based on Telenor mobility data. We observed a large reduction in inter-municipality mobility in March 2020 (with minimum reached on Tuesday 17 March 2020), and thereafter we see an increasing trend in the mobility lasting until vacation time in July 2020. The changes in mobility in July 2020 coincides with the three-week "fellesferie" in Norway, and during August the mobility resumes approximately the same levels as pre-vacation time. There is however a significant regional variation.

The reference level is set to 100 on March 2nd 2020 for all the figures in this section, and we plot the seven-day, moving average of the daily mobility. Figure 20 shows an overview of the mobility since March 2020 for the largest municipalities in each county, and Figure 21 shows the total mobility out from all municipalities in each county, including Oslo. Figure 22 and 23, zooms in on mobility from April 19 2021, for municipalities and counties, respectively.

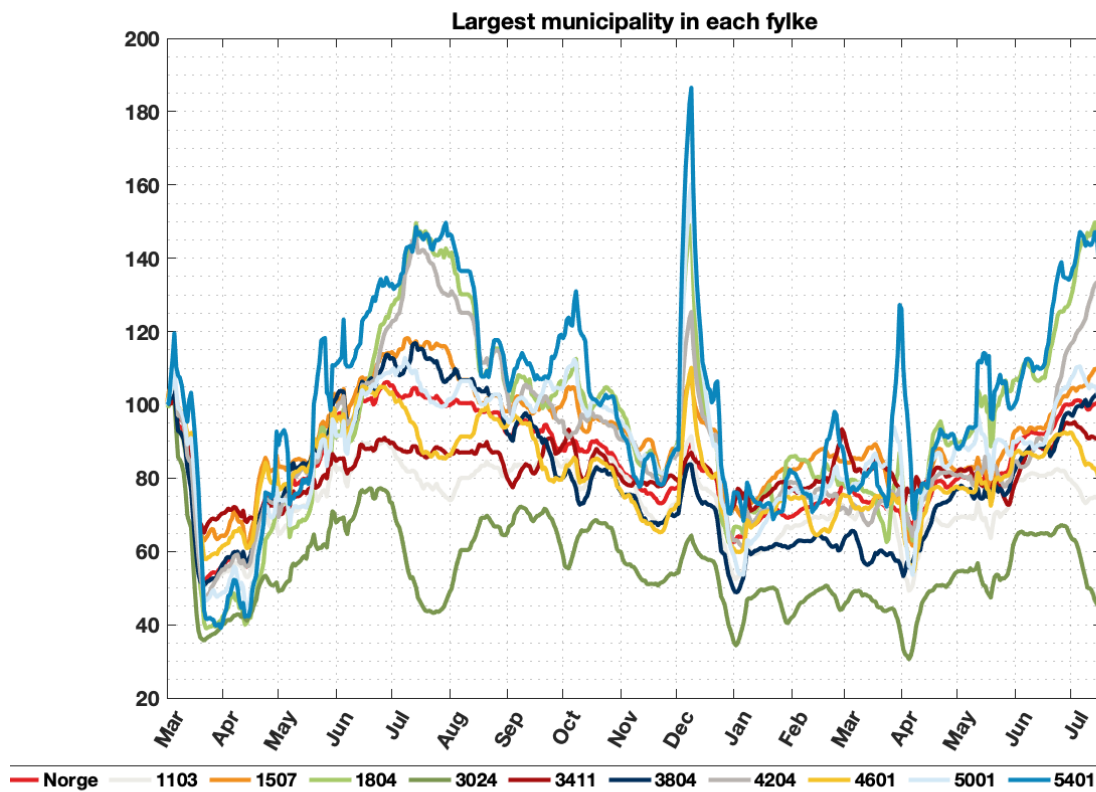


Figure 20: Mobility for selected municipalities since March 2020: Nationally (Norge), Stavanger (1103), Ålesund (1507), Bodø (1804), Bærum (3024), Ringsaker (3411), Sandefjord (3804), Kristiansand (4204), Bergen (4601), Trondheim (5001), Tromsø (5401).

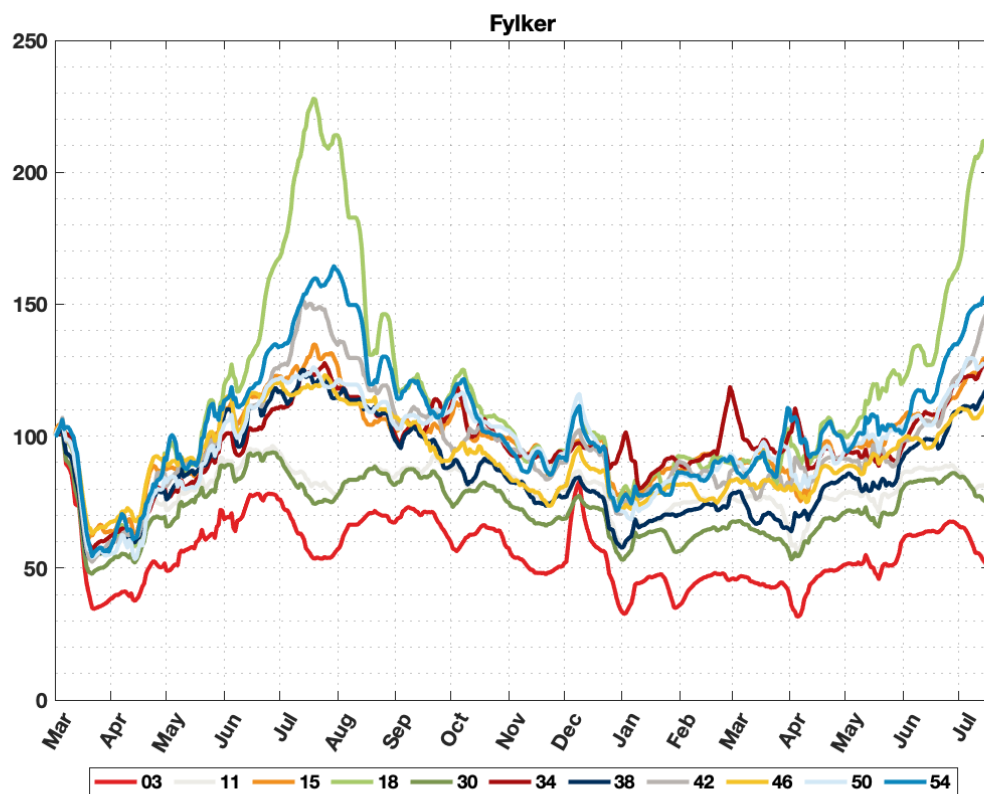


Figure 21: Mobility for fylker since March 2020: Oslo (03), Rogaland (11), Møre og Romsdal (15), Nordland (18), Viken (30), Innlandet (34), Vestfold og Telemark (38), Agder (42), Vestland (46), Trøndelag (50), Troms og Finmark (54).

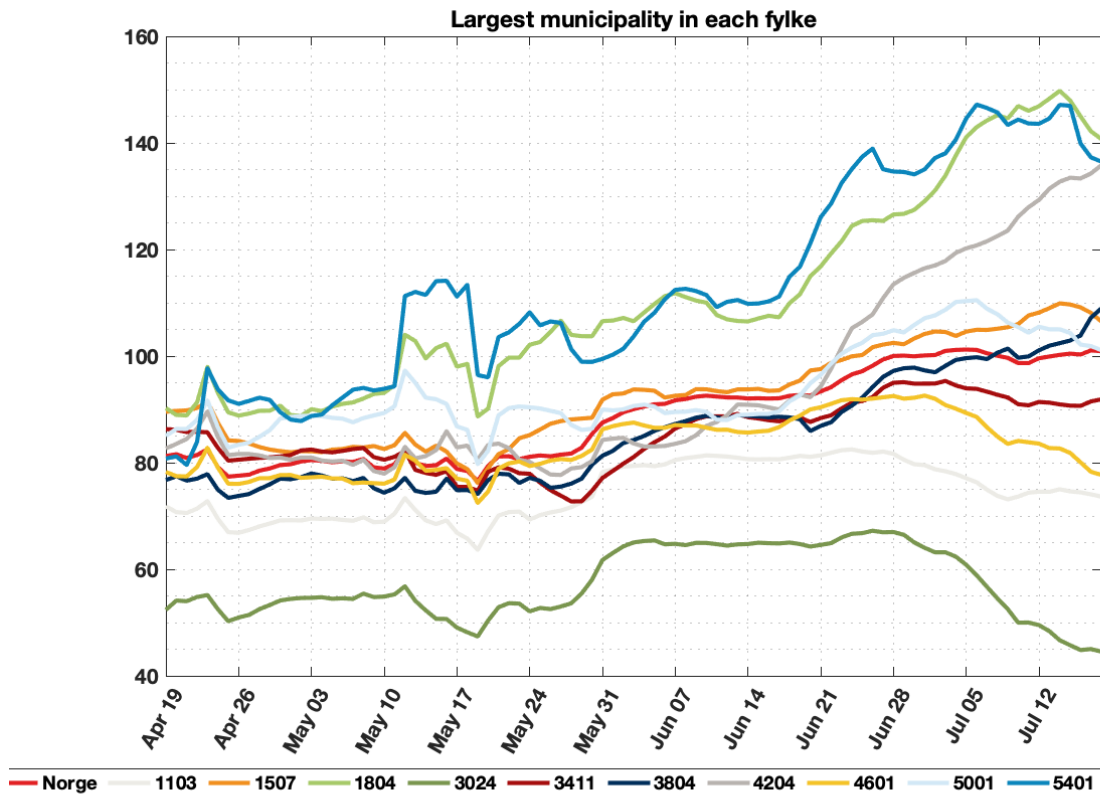


Figure 22: Zoom: Mobility from April 19, 2021 and onwards: Nationally (Norge), Stavanger (1103), Ålesund (1507), Bodø (1804), Bærum (3024), Ringsaker (3411), Sandefjord (3804), Kristiansand (4204), Bergen (4601), Trondheim (5001), Tromsø (5401).

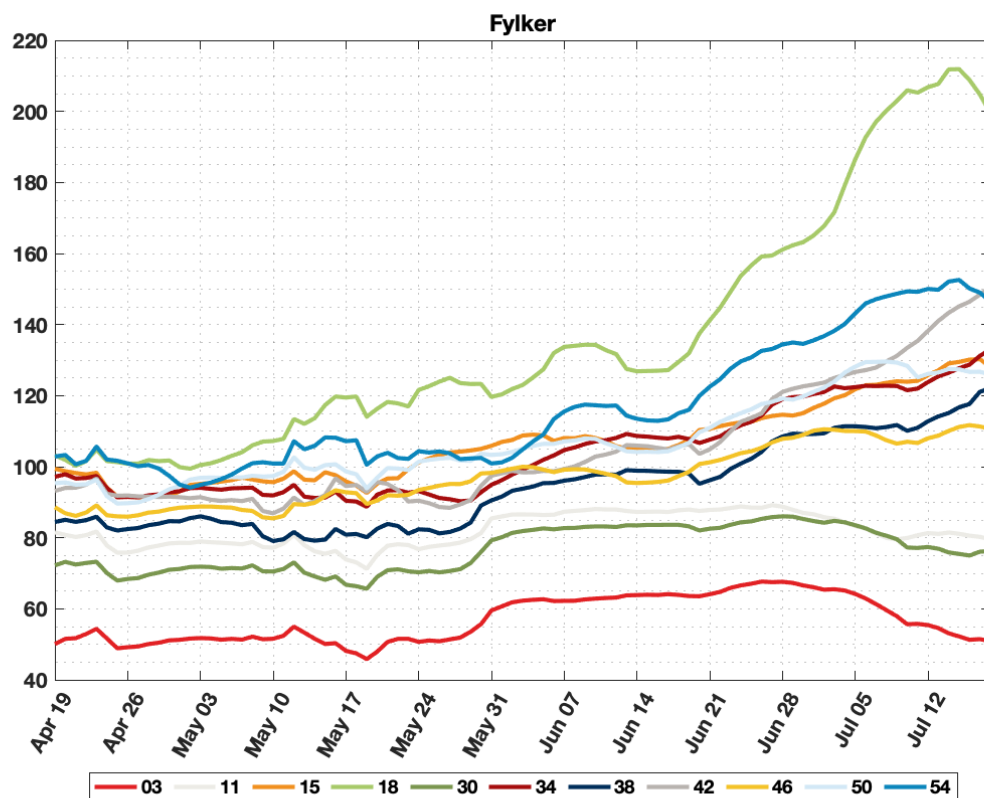


Figure 23: Zoom: Mobility from April 19, 2021 and onwards, per fylker: Oslo (03), Rogaland (11), Møre og Romsdal (15), Nordland (18), Viken (30), Innlandet (34), Vestfold og Telemark (38), Agder (42), Vestland (46), Trøndelag (50), Troms og Finnmark (54).

	25	26	27	28	29
Norge	92.0	93.4	100.0	101.2	99.6
Stavanger	80.7	81.4	81.7	77.1	74.6
Ålesund	93.8	97.6	102.5	104.6	108.2
Bodø	106.5	116.8	126.6	141.1	146.9
Bærum	64.7	64.6	67.0	60.8	49.5
Ringsaker	88.5	88.4	95.0	94.0	91.4
Sandefjord	88.8	86.9	97.2	99.6	101.1
Kristiansand	90.9	94.3	113.5	120.2	129.3
Bergen	85.7	90.4	92.5	89.3	83.6
Trondheim	89.0	96.5	104.8	110.3	105.5
Tromsø	109.8	126.1	134.6	144.6	143.6

Table 14: Municipalities

	25	26	27	28	29
Oslo	63.9	64.1	67.6	64.2	55.4
Rogaland	87.3	87.8	88.8	83.3	81.3
Møre og Romsdal	104.8	110.7	114.6	121.8	125.7
Nordland	126.8	141.2	161.1	186.5	206.8
Viken	83.5	82.5	86.0	83.5	77.4
Innlandet	108.6	107.6	119.0	122.4	123.8
Vestfold og Telemark	98.9	96.2	108.5	111.4	112.8
Agder	105.9	104.9	121.0	126.7	138.2
Vestlandet	95.4	101.2	107.9	110.0	108.0
Trøndelag	104.2	110.9	119.2	128.2	126.1
Troms og Finnmark	113.5	122.5	134.4	143.1	150.0

Table 15: Counties

Weekly mobility for Norway and selected municipalities is displayed in Table 14 and mobility for counties is displayed in Table 15. The percentages in the tables are to be interpreted towards the reference level of 100 for week 10 in March 2020. The color-coding encodes the following: 'Green' monotonic decrease in mobility, 'Yellow' almost monotonic decrease or flat mobility trend, 'Red' increasing mobility.

10.1 Foreign roamers on Telenor's network in Norway

10.1 Foreign roamers on Telenor's network in Norway

An analysis of foreign roamers in Norway from January 2020 has been carried out, to better understand the potential virus importation. In Figure 24 the total number of roamers per day per county are displayed. We can see an approximate 40% drop in the number of visiting roamers after the lock-down in March 2020. The number of visiting roamers recover during the Summer of 2020, and there is a spike of visitors in August followed by a drop again. During October and November 2020 the levels of visiting, foreign roamers to Norway have reached quite high levels, just 10% short of the all-year high for 2020, and Oslo and Viken have seen big increases in visitors. There is a reduction in visitors during Christmas, and in January 2021 we see an increasing trend again.

Figure 25 shows the levels of roamers from the following countries: Poland, Lithuania, Sweden, Netherlands, Denmark, Latvia, Germany, Spain, Finland and the rest of the world. These levels represent the total number of foreign, visiting roamers from each of the countries per day in Norway, since April 19 2021.

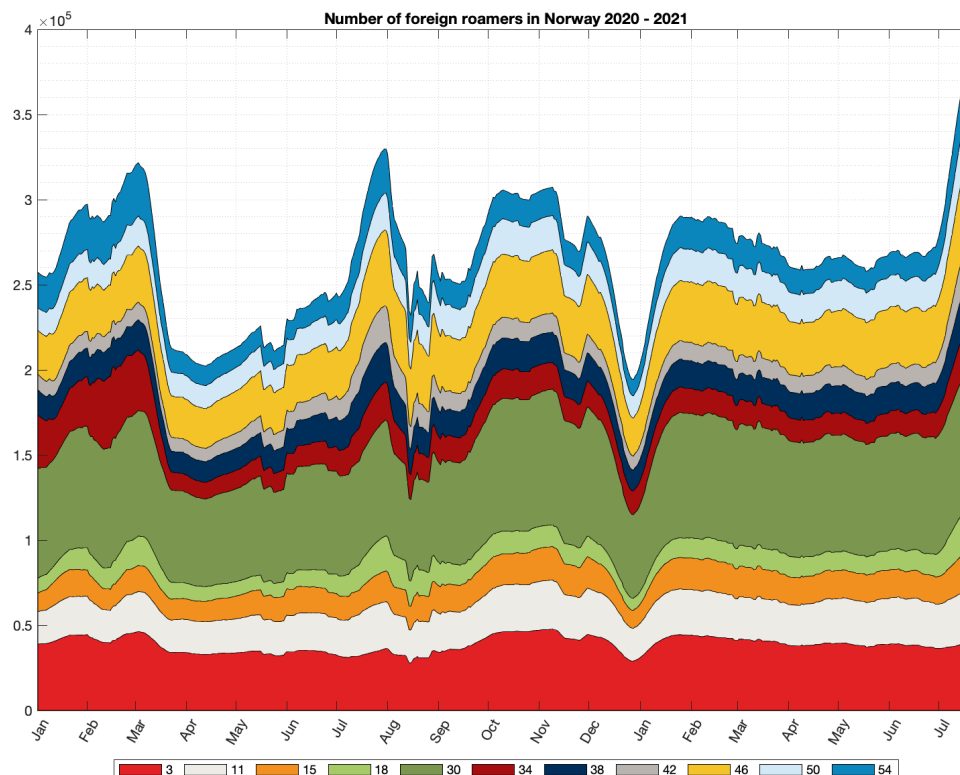


Figure 24: The total number of foreign roamers in Norway broken down on different fylker: Oslo (3), Rogaland (11), Møre og Romsdal (15), Nordland (18), Viken (30), Innlandet (34), Vestfold og Telemark (38), Agder (42), Vestland (46), Trøndelag (50), Troms og Finnmark (54).

10.1 Foreign roamers on Telenor's network in Norway

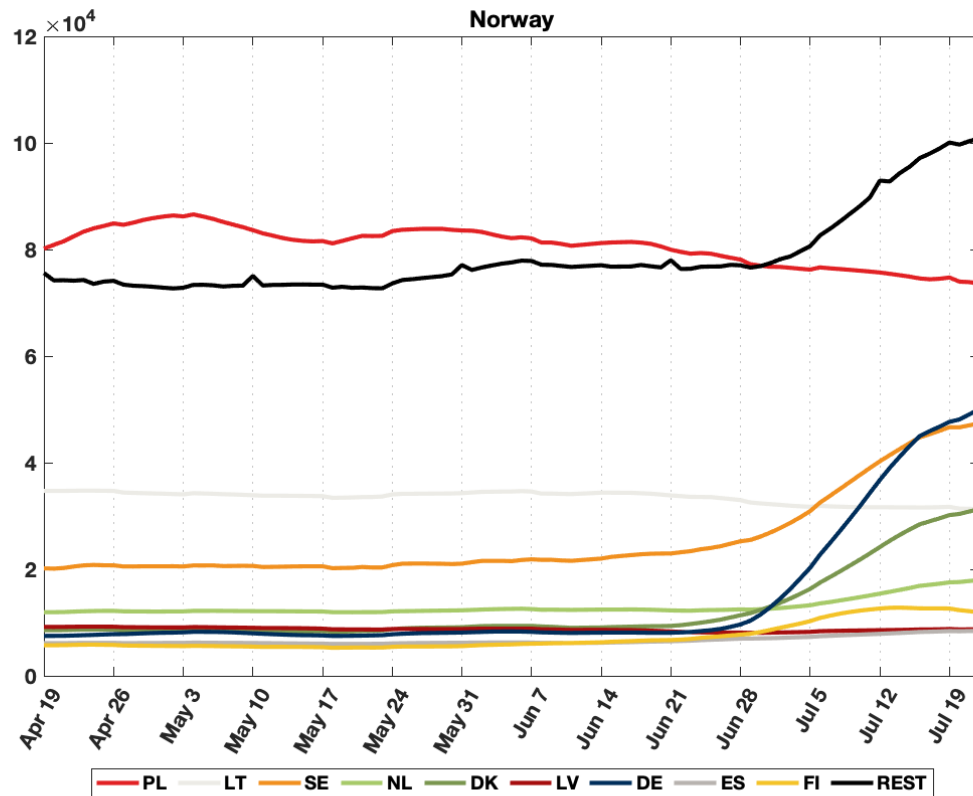
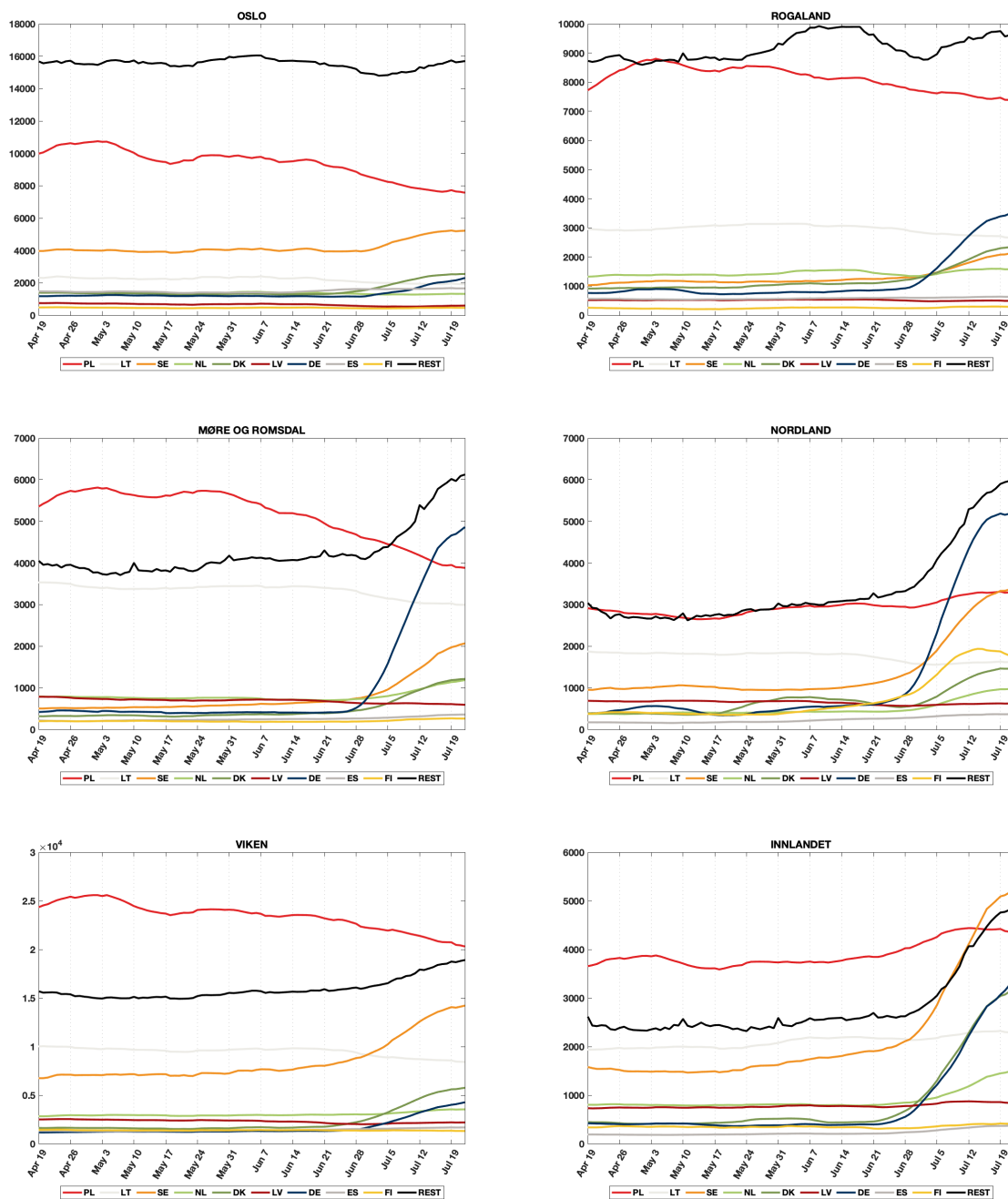


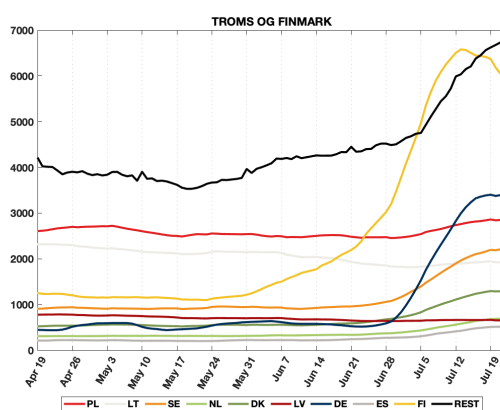
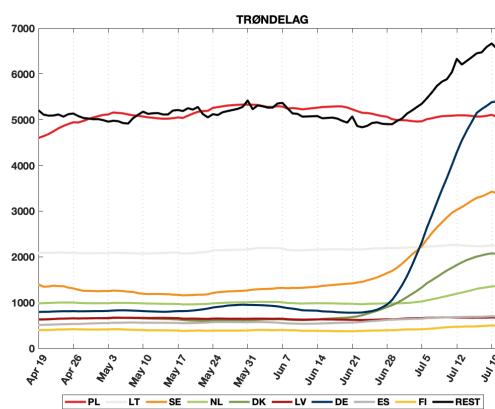
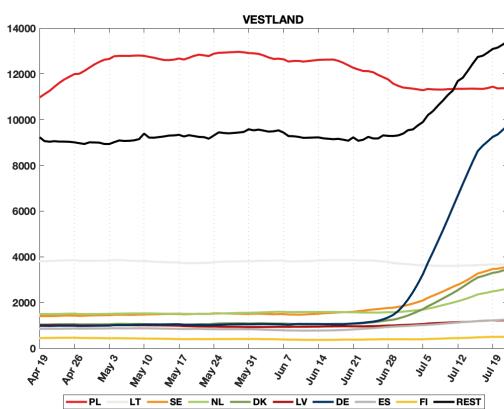
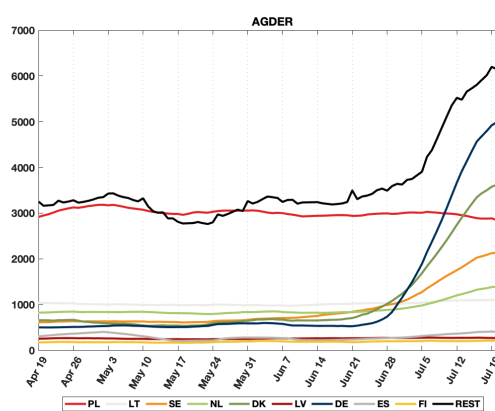
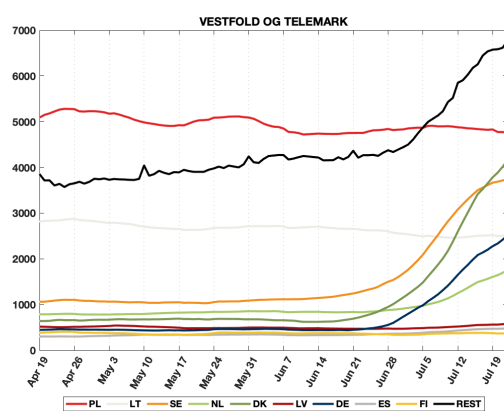
Figure 25: National overview of total number of foreign, visiting roamers from Poland, Lithuania, Sweden, Netherlands, Denmark, Latvia, Germany, Spain, Finland and the rest of the world.

10.2 Foreign roamers per county (fylke) in Norway

10.2 Foreign roamers per county (fylke) in Norway



10.2 Foreign roamers per county (fylke) in Norway



10.3 Foreign roamers from India, Myanmar and Pakistan

10.3 Foreign roamers from India, Myanmar and Pakistan

Figure 28 shows the levels of roamers from the following countries: Bangladesh, India, Myanmar and Pakistan. These levels represent the number of foreign, visiting roamers from each of the countries per day in Norway, since April 19 2021. The number of visitors from India, Myanmar and Pakistan show stable levels throughout the period.

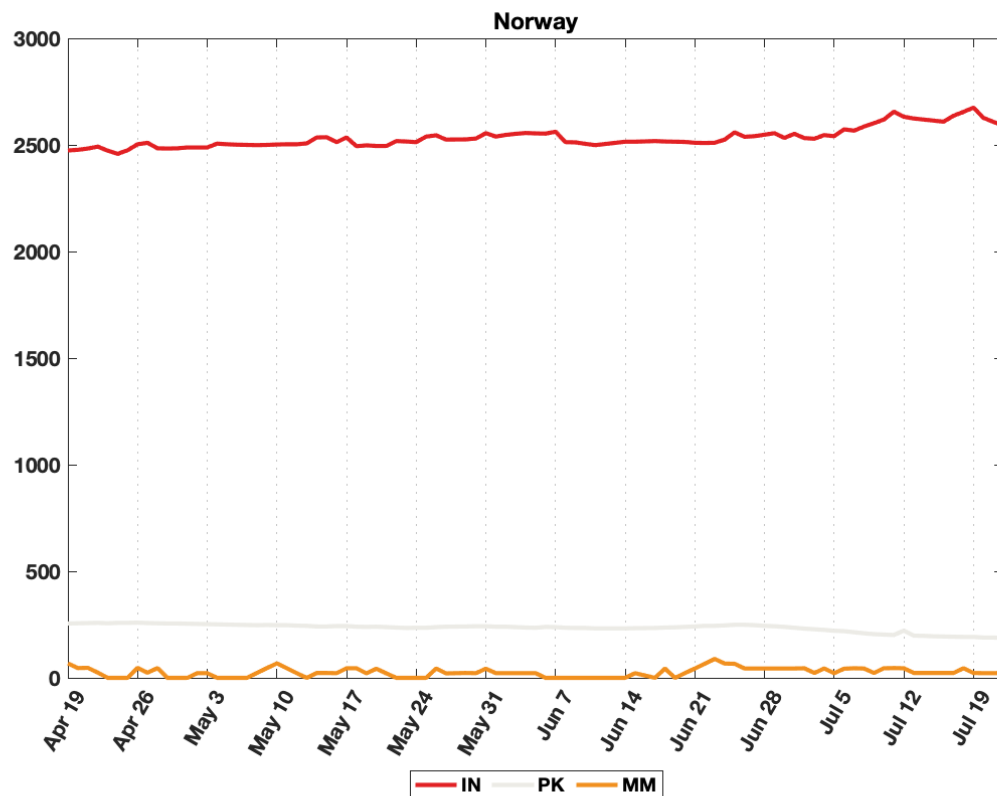


Figure 28: National overview of total number of foreign, visiting roamers from India (IN), Myanmar (MM) and Pakistan (PK).

11 Methods

11.1 Model

We use a metapopulation model to simulate the spread of COVID-19 in Norway in space and time. The model consists of three layers: the population structure in each municipality, information about how people move between different municipalities, and local transmission within each municipality. In this way, the model can simulate the spread of COVID-19 within each municipality, and how the virus is transported around in Norway.

11.1.1 Transmission model

We use an SEIR (Susceptible-Exposed-Infected-Recovered) model without age structure to simulate the local transmission within each area. Mixing between individuals within each area is assumed to be random. Demographic changes due to births, immigration, emigration and deaths are not considered. The model distinguishes between asymptomatic and symptomatic infection, and we consider presymptomatic infectiousness among those who develop symptomatic infection. In total, the model consists of 6 disease states: Susceptible (S), Exposed, infected, but not infectious (E_1), Presymptomatic infected (E_2), Symptomatic infected (I), Asymptomatic infected (I_a), and Recovered, either immune or dead (R). A schematic overview of the model is shown in figure 29.

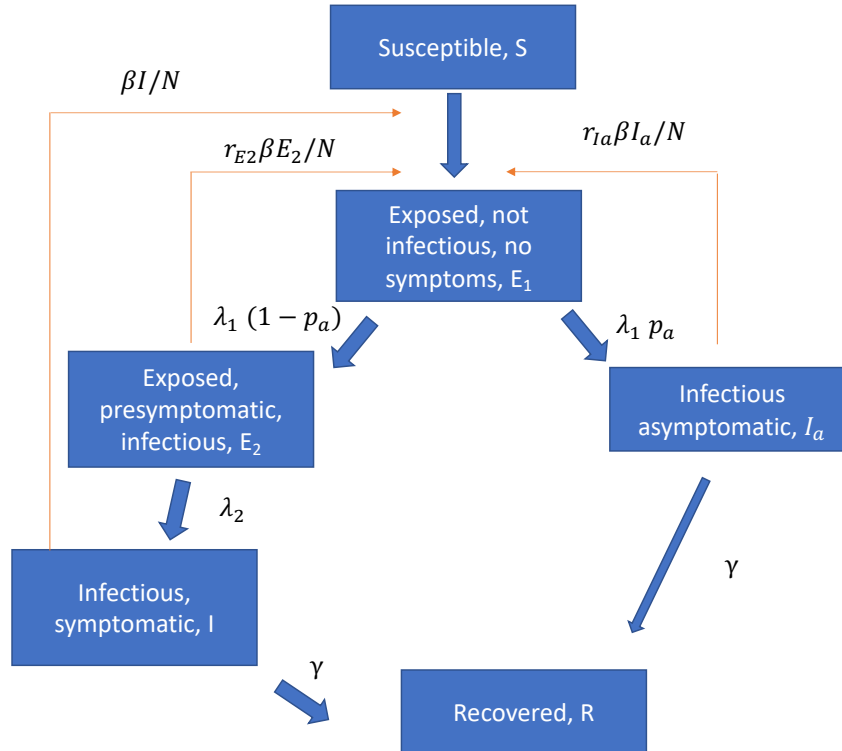


Figure 29: Schematic overview of the model.

11.2 Movements between municipalities:

We use 6-hourly mobility matrices from Telenor to capture the movements between municipalities. The matrices are scaled according to the overall Telenor market share in Norway, estimated to be 48%. Since week 8, we use the actual daily mobility matrices to simulate the past. In this way, alterations in the mobility pattern will be incorporated in our model predictions. To predict future movements, we use the

11.3 Healthcare utilisation

latest weekday measured by Telenor, regularised to be balanced in total in- and outgoing flow for each municipality.

11.3 Healthcare utilisation

Based on the estimated daily incidence data from the model and the population age structure in each municipality, we calculated the hospitalisation using a weighted average. We correct these probabilities by a factor which represents the over or under representation of each age group among the lab confirmed positive cases. The hospitalisation is assumed to be delayed relative to the symptom onset. We calculate the number of patients admitted to ventilator treatment from the patients in hospital using age-adjusted probabilities and an assumed delay.

11.4 Seeding

At the start of each simulation, we locate 5.367.580 people in the municipalities of Norway according to data from SSB per January 1. 2020. All confirmed Norwegian imported cases with information about residence municipality and test dates are used to seed the model, using the data available until yesterday. For each case, we add an additional random number of infectious individuals, in the same area and on the same day, to account for asymptomatic imported cases who were not tested or otherwise missed. We denote this by the amplification factor.

11.5 Calibration

Estimation of the parameters of the model: the reproduction numbers, the amplification factor for the imported cases, the parameters of the detection probability and the delay between incidence and test, is done using Sequential Monte Carlo Approximate Bayesian Computation (SMC-ABC), as described in Engebretsen et al. (2020): <https://royalsocietypublishing.org/doi/10.1098/rsif.2019.0809>, where the algorithm can be found in the supplement.

The idea behind ABC is to try out different parameter sets, simulate using these, then compare how much the simulations deviate from the observations in terms of summary statistics. We thus test millions of combinations of the different reproductive numbers, the amplification factor, and the parameters for the positive tests, to determine the ones that lead to the best fits to the true number of hospitalised individuals, from March 10 2020 until the last available data point, and the laboratory-confirmed COVID-19 cases from May 1 until the latest available data point.

In the ABC procedure we thus use two summary statistics, one is the distance between the simulated hospitalisation incidence and the observed incidence, and the other is the distance between the observed number of laboratory-confirmed cases and the simulated ones. As the two summary statistics are not on the same scale, we use two separate tolerances in the ABC-procedure, ensuring that we get a good fit to both data sources.

11.5.1 Calibration to hospitalisation data

In order to calibrate to the hospitalisation data, we need to simulate hospital incidence. The details on how we simulate hospitalisations are described in Section 11.3, using the parameters provided in Section 12, which are estimated from individual-level Norwegian data, and updated regularly. As our distance measure, we calculate the squared distance over each time point and each county.

11.5.2 Calibration to test data

We include the laboratory-confirmed cases in the calibration procedure, as these contain additional information about the transmissibility, and the delay between transmission and testing is shorter than the delay between transmission and hospitalisation. Therefore, we simulate also the number of detected positive cases in our model. We assume that the number of detected positive cases can be modelled as a binomial process of the simulated daily total incidence of symptomatic and asymptomatic cases, with a

11.6 Specifications for the national changepoint model

success probability π_t , which changes every day. We also assume a delay d between the day of test and the day of transmission.

The data on the number of positive cases are more difficult to use, as the test criteria and capacity have changed multiple times. We take into account these changes by using the total number of tests performed on each day, as a good proxy of capacity and testing criteria. Moreover, we choose not to calibrate to the test data before May 1, because the test criteria and capacity were so different in the early period. The detection probability is modelled as

$$\pi_t = \exp(\pi_0 + \pi_1 \cdot k_t) / (1 + \exp(\pi_0 + \pi_1 \cdot k_t)),$$

where k_t is the number of tests actually performed on day t , and π_0 and π_1 are two parameters that we estimate, assuming positivity of π_1 . We also estimate the delay d . We choose to use a 7-days backwards moving average for the covariate k_t . To calculate the distance between the observed number of positive tests and the simulated ones we also use a 7-days backwards moving average. We do this to take into account potential day-of-the-week-effects. For example, it could well be that the testing criteria are different on weekends and weekdays. However, using instead the number of tests and calibrating on a daily basis would lead to a larger day-to-day variance. This is likely why we find that the uncertainty in the simulated positive cases seems somewhat too low, and that we do not capture all the variance in the daily test data. Moreover, the binomial assumption could be too simple, and a beta-binomial distribution would allow more variance. A limitation of our current model for the detection probability, is that we only capture the changes in the test criteria that are captured in the total number of tests performed.

11.6 Specifications for the national changepoint model

In the national changepoint model, we assume a first reproduction number R_0 until March 14, a second reproduction number R_1 until April 19, a third reproduction number R_2 until May 10, a fourth reproduction number R_3 until June 30, R_4 until July 31, R_5 until August 31, R_6 from September 1 until September 30, R_7 from October 1 until October 26, R_8 until November 4, R_9 from November 5th until November 30th, R_{10} from December 1st until January 4, a twelfth reproduction number R_{11} from January 4 until January 21, a thirteenth reproduction number from January 22 to February 7 and a fourteenth reproduction number from February 8. This last reproduction number is used for the future. The changepoints follow the changes in restrictions introduced. In the calibration procedure, we obtain 200 parameter sets that we use to represent the distributions of parameters.

After we have obtained the estimated parameters, we run the model with these 200 parameter sets again, from the beginning until today, plus three weeks into the future (or for an additional year). In this way, we obtain different trajectories of the future, allowing us to investigate different scenarios, with corresponding uncertainty.

11.7 Specifications for the regional changepoint model

In the regional changepoint model, each county has its own reproduction numbers, assumed constant in different periods, just like the national changepoint model. As there are more parameters in the regional changepoint model, we obtain 1000 parameter sets in the ABC-SMC.

Calibrating regional reproduction numbers is a more difficult estimation problem than calibrating national reproduction numbers, as we have a lot more parameters, and in addition less data in each county. Therefore, we cannot include the same amount of changepoints in the regional model as we can for the national model.

After we have obtained the estimated parameters, we run the model with these 1000 parameter sets again, from the beginning until today, plus three weeks into the future (or for an additional year). In this way, we obtain different trajectories of the future, allowing us to investigate different scenarios, with corresponding uncertainty.

12 Parameters used today

Figures 30 to 35 indicate which assumptions we make in our regional model, related to hospitalisation. We obtained data from the Norwegian Pandemiregister. These estimates will be regularly updated, on the basis of new data.

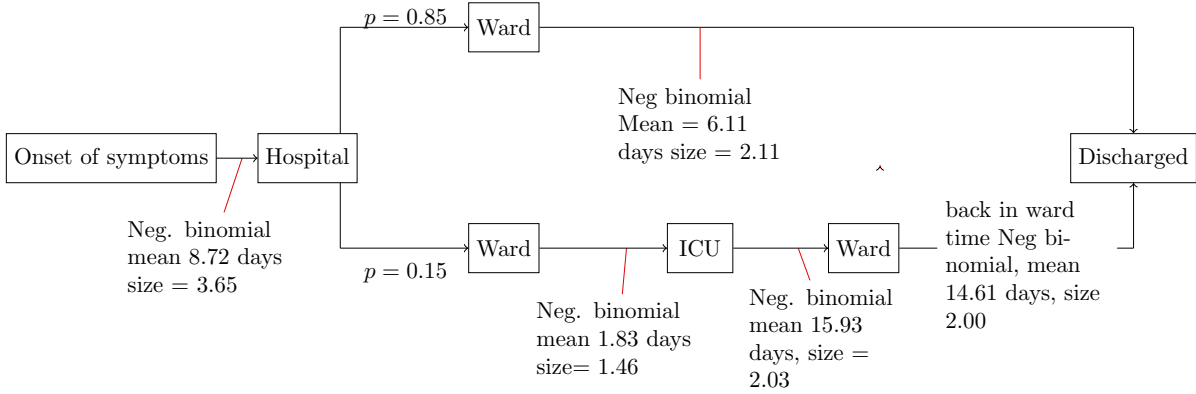


Figure 30: Hospital assumptions and parameters used before 1 June 2020

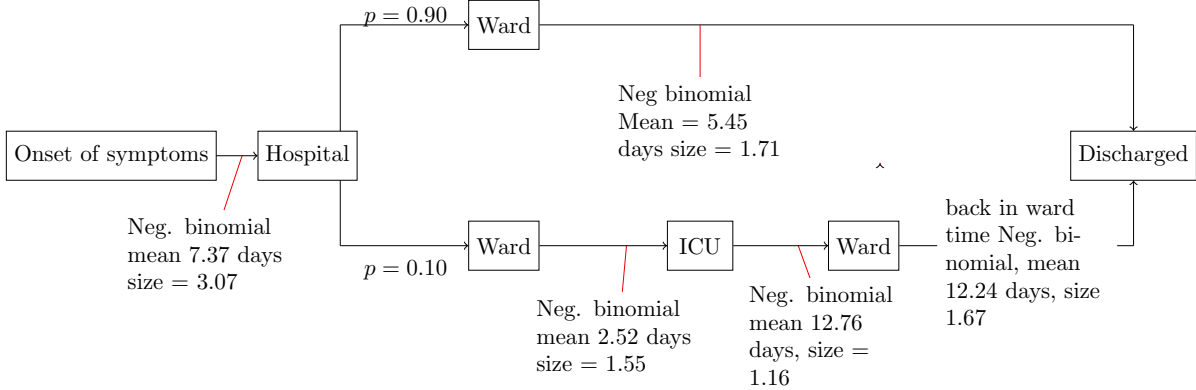


Figure 31: Hospital assumptions and parameters used between 1 June 2020 and 1 January 2021

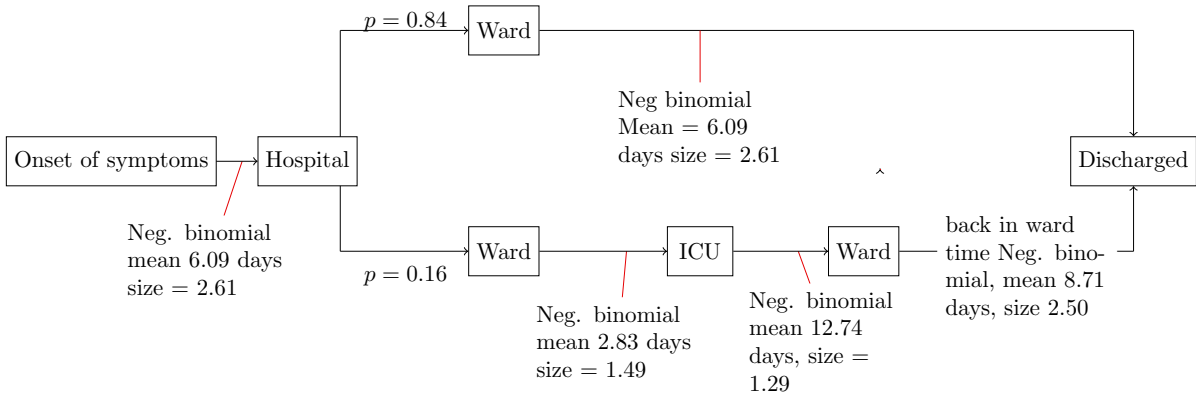


Figure 32: Hospital assumptions and parameters used between 1 January 2021 and 1 March 2021 for those living in Oslo

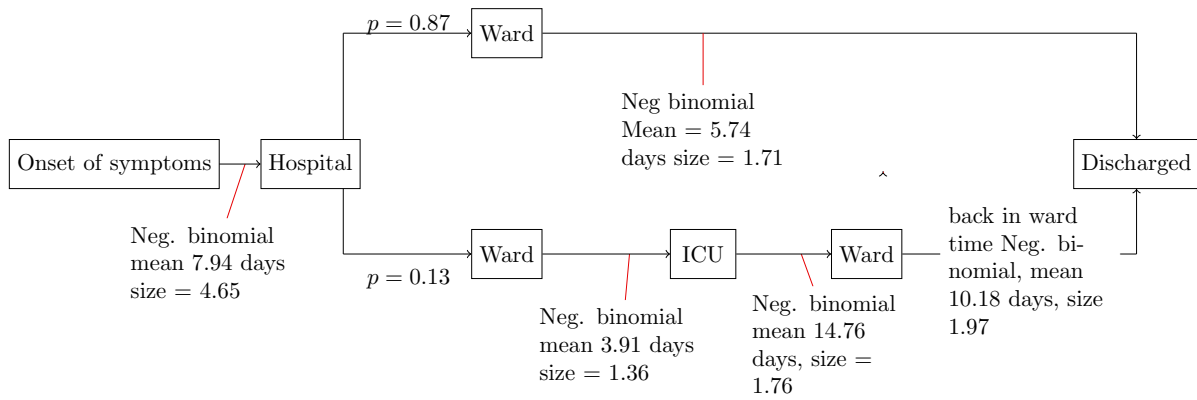


Figure 33: Hospital assumptions and parameters used between 1 January 2021 and 1 March 2021 for those not living in Oslo

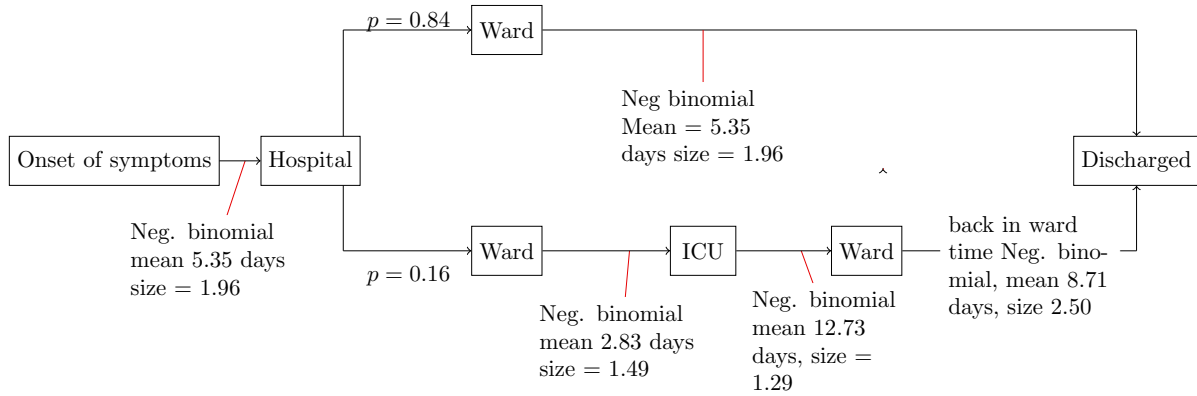


Figure 34: Hospital assumptions and parameters used from 1 March 2021 for those living in Oslo

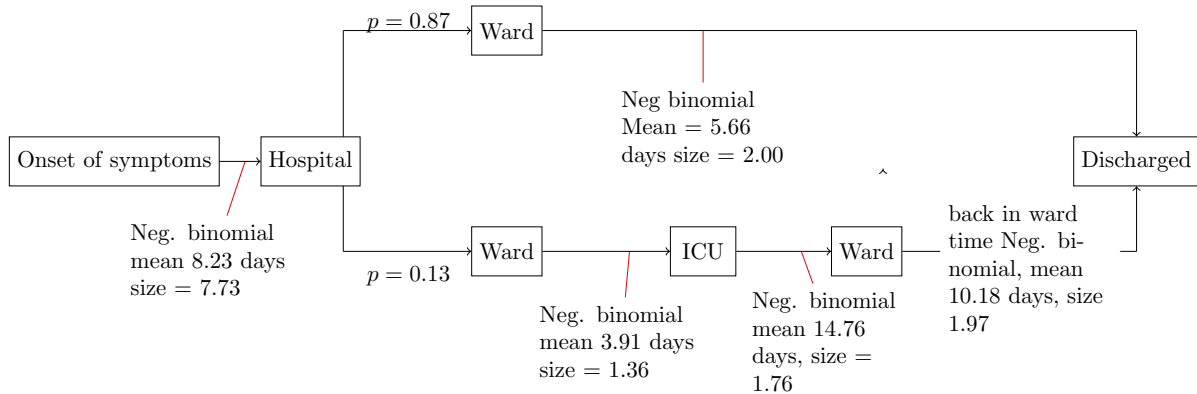


Figure 35: Hospital assumptions and parameters used from 1 March 2021 for those not living in Oslo

Table 16: Estimated parameters

	Min.	1st Qu.	Median	Mean	3rd Qu.	Max.	Period
R0s	2.29	2.84	2.983	3.009	3.168	3.875	Until March 14
R1s	0.443	0.482	0.498	0.499	0.516	0.579	From 15 March to 19 April
R2s	0.154	0.575	0.672	0.674	0.788	1.007	From 20 April to 10 May
R3s	0.232	0.696	0.808	0.786	0.89	1.168	From 11 May to 30 June
R4s	0.028	0.41	0.598	0.647	0.841	1.487	From 01 July to 31 July
R5s	0.746	1.011	1.068	1.086	1.156	1.442	From 01 August to 31 August
R6s	0.806	0.942	0.989	0.994	1.053	1.185	From 01 September to 30 September
R7s	0.991	1.127	1.171	1.175	1.228	1.374	From 01 October to 25 October
R8s	0.999	1.192	1.27	1.267	1.338	1.527	From 26 October to 04 November
R9s	0.75	0.819	0.841	0.838	0.859	0.899	From 05 November to 30 November
R10s	0.988	1.025	1.035	1.039	1.05	1.136	From 01 December to 03 January
R11s	0.39	0.552	0.576	0.577	0.605	0.696	From 04 January to 21 January
R12s	0.594	0.701	0.739	0.745	0.785	0.997	From 22 January to 07 February
R13s	1.337	1.407	1.432	1.44	1.471	1.594	From 08 February to 01 March
R14s	1.018	1.067	1.089	1.089	1.112	1.167	From 02 March to 24 March
R15s	0.718	0.753	0.767	0.768	0.783	0.839	From 25 March to 15 April
R16s	0.743	0.804	0.828	0.825	0.848	0.921	From 16 April to 05 May
R17s	0.863	1.046	1.081	1.08	1.113	1.241	From 06 May to 19 May
R18s	0.529	0.627	0.657	0.66	0.691	0.77	From 20 May to 14 June
R19s	0.738	0.892	0.977	0.981	1.055	1.317	From 15 June to 04 July
R20s	0.47	0.786	0.904	0.917	1.048	1.379	From 05 July
AMPs	1.157	1.951	2.223	2.183	2.427	3.048	-
π_0	-0.325	0.088	0.204	0.193	0.309	0.549	-
π_1	9.4e-09	1.1e-05	1.8e-05	1.9e-05	2.6e-05	4.8e-05	-
delays	0	1	1	1.37	2	4	-

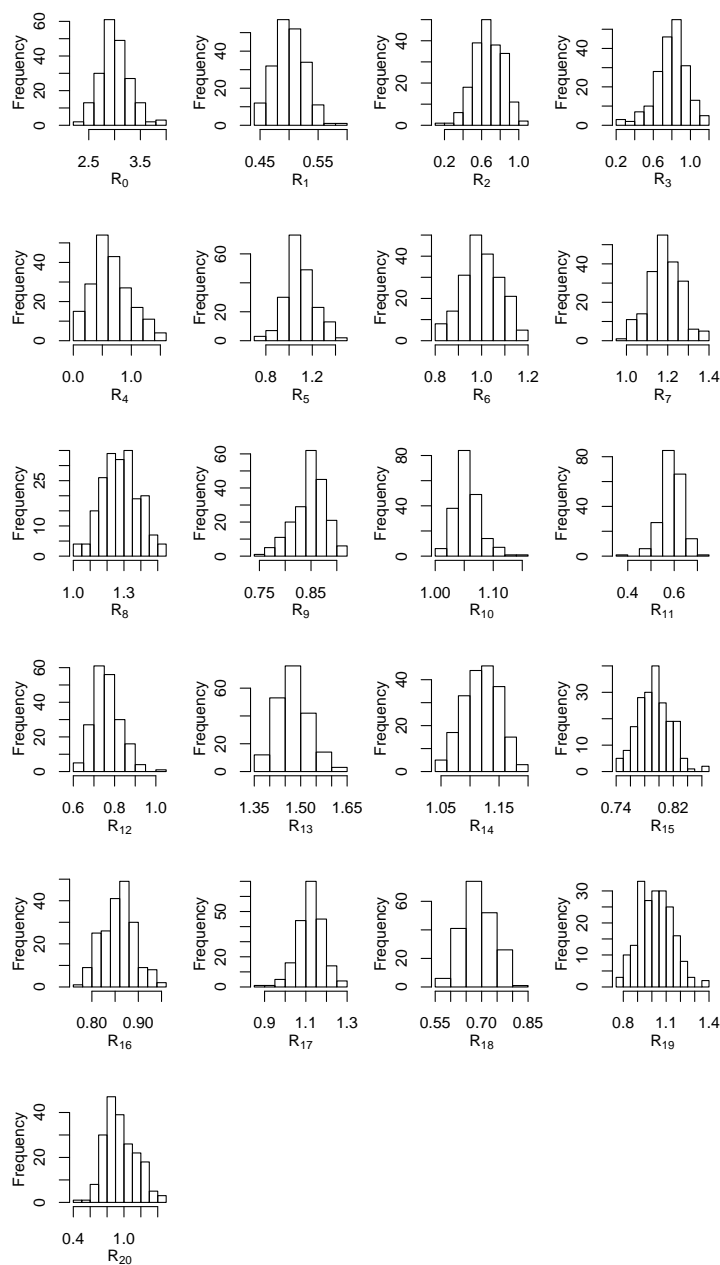


Figure 36: Estimated densities of the reproduction numbers. National model

Table 17

R	Parameter	County	From	To	Pr(R>1)
5.62 (5.19-5.89)	R0	Oslo	2020-02-17	2020-03-14	1
3.63 (2.63-3.96)	R0	Rogaland	2020-02-17	2020-03-14	1
2.32 (1.94-4.26)	R0	Møre og Romsdal	2020-02-17	2020-03-14	1
1.74 (0.92-4.97)	R0	Nordland	2020-02-17	2020-03-14	0.32
3.5 (3.02-4.2)	R0	Viken	2020-02-17	2020-03-14	1
2.15 (1.79-3.72)	R0	Innlandet	2020-02-17	2020-03-14	1
3.12 (2.55-3.99)	R0	Vestfold og Telemark	2020-02-17	2020-03-14	1
2.27 (2.02-3.47)	R0	Agder	2020-02-17	2020-03-14	1
2.24 (1.9-4.01)	R0	Vestland	2020-02-17	2020-03-14	1
2.91 (2.49-4.82)	R0	Trøndelag	2020-02-17	2020-03-14	1
2.2 (1.99-3.66)	R0	Troms og Finnmark	2020-02-17	2020-03-14	1
0.56 (0.52-0.7)	R1	Oslo	2020-03-15	2020-04-19	0
0.44 (0.23-0.88)	R2	Oslo	2020-04-20	2020-07-24	0.01
1.28 (1.26-1.38)	R3	Oslo	2020-07-25	2020-09-30	1
1.54 (1.44-1.56)	R4	Oslo	2020-10-01	2020-11-04	1
1.01 (0.99-1.1)	R5	Oslo	2020-11-05	2020-12-14	0.27
1.35 (1.25-1.51)	R6	Oslo	2020-12-15	2021-01-03	1
0.82 (0.64-0.86)	R7	Oslo	2021-01-04	2021-02-04	0
1.51 (1.43-1.91)	R8	Oslo	2021-02-05	2021-02-21	1
1.99 (1.56-2.22)	R9	Oslo	2021-02-22	2021-03-01	1
1.4 (1.26-1.54)	R10	Oslo	2021-03-02	2021-03-16	1
0.93 (0.9-0.98)	R11	Oslo	2021-03-17	2021-04-15	0.02
0.81 (0.76-0.86)	R12	Oslo	2021-04-16	2021-05-26	0
1.2 (0.83-1.46)	R13	Oslo	2021-05-27	2021-06-09	0.86
0.74 (0.4-1.15)	R14	Oslo	2021-06-10		0.11
0.06 (0.01-0.09)	R1	Rogaland	2020-03-15	2020-04-19	0
1.01 (0.61-1.1)	R2	Rogaland	2020-04-20	2020-08-31	0.72
0.82 (0.66-0.98)	R3	Rogaland	2020-09-01	2020-11-04	0.02
0.47 (0.32-1.04)	R4	Rogaland	2020-11-05	2020-11-30	0.03
1.32 (1.18-1.51)	R5	Rogaland	2020-12-01	2021-01-03	1
0.08 (0.04-0.31)	R6	Rogaland	2021-01-04	2021-01-31	0
1.64 (1.44-1.71)	R7	Rogaland	2021-02-01	2021-03-09	1
1.14 (1.04-1.32)	R8	Rogaland	2021-03-10	2021-03-29	0.99
0.99 (0.81-1.05)	R9	Rogaland	2021-03-30	2021-04-15	0.75
0.23 (0.04-0.46)	R10	Rogaland	2021-04-16	2021-04-25	0
0.56 (0.25-0.85)	R11	Rogaland	2021-04-26	2021-05-31	0
1.7 (1.22-2.23)	R12	Rogaland	2021-06-01	2021-06-22	1
0.41 (0.03-0.89)	R13	Rogaland	2021-06-23		0.01
0.28 (0.2-0.57)	R1	Møre og Romsdal	2020-03-15	2020-04-19	0
0.62 (0.41-1.04)	R2	Møre og Romsdal	2020-04-20	2020-09-14	0.04
0.76 (0.49-0.96)	R3	Møre og Romsdal	2020-09-15	2020-11-04	0.01
0.66 (0.14-0.82)	R4	Møre og Romsdal	2020-11-05	2020-12-14	0.01
1.04 (0.13-1.25)	R5	Møre og Romsdal	2020-12-15	2021-01-03	0.73
0.44 (0.2-0.66)	R6	Møre og Romsdal	2021-01-04	2021-02-28	0
1 (0.88-1.48)	R7	Møre og Romsdal	2021-03-01	2021-04-15	0.3
1.67 (0.59-2.63)	R8	Møre og Romsdal	2021-04-16	2021-04-25	0.9
0.24 (0.02-0.56)	R9	Møre og Romsdal	2021-04-26	2021-05-17	0
0.48 (0.03-1.25)	R10	Møre og Romsdal	2021-05-18	2021-06-04	0.08
0.61 (0.15-1.08)	R11	Møre og Romsdal	2021-06-05		0.06
0.53 (0.07-0.78)	R1	Nordland	2020-03-15	2020-04-19	0
1.02 (0.62-1.11)	R2	Nordland	2020-04-20	2020-07-24	0.7
0.67 (0.12-2.05)	R3	Nordland	2020-07-25	2020-08-14	0.07
0.34 (0.22-0.84)	R4	Nordland	2020-08-15	2020-10-04	0
0.54 (0.34-1.13)	R5	Nordland	2020-10-05	2020-11-04	0.06
0.22 (0.03-0.9)	R6	Nordland	2020-11-05	2020-12-14	0.02
0.68 (0.25-1.35)	R7	Nordland	2020-12-15	2021-01-03	0.09
0.89 (0.75-1.02)	R8	Nordland	2021-01-04	2021-02-14	0.04
1.23 (0.42-1.72)	R9	Nordland	2021-02-15	2021-02-28	0.86
0.25 (0.13-0.69)	R10	Nordland	2021-03-01	2021-04-15	0
1.17 (0.26-2.08)	R11	Nordland	2021-04-16	2021-04-25	0.64
0.57 (0.17-0.97)	R12	Nordland	2021-04-26	2021-05-26	0.02
0.91 (0.55-1.34)	R13	Nordland	2021-05-27		0.31
0.26 (0.2-0.37)	R1	Viken	2020-03-15	2020-04-19	0
0.89 (0.54-1.07)	R2	Viken	2020-04-20	2020-07-24	0.07
1.08 (1.03-1.17)	R3	Viken	2020-07-25	2020-10-09	1
1.46 (1.41-1.52)	R4	Viken	2020-10-10	2020-11-04	1
0.81 (0.75-0.86)	R5	Viken	2020-11-05	2020-11-30	0
1.01 (0.91-1.03)	R6	Viken	2020-12-01	2021-01-03	0.73
0.75 (0.71-0.88)	R7	Viken	2021-01-04	2021-02-04	0
1.4 (1.25-1.5)	R8	Viken	2021-02-05	2021-02-21	1
1.35 (1.27-1.37)	R9	Viken	2021-02-22	2021-03-24	1
0.72 (0.69-0.78)	R10	Viken	2021-03-25	2021-04-15	0
0.77 (0.72-0.82)	R11	Viken	2021-04-16	2021-05-26	0
0.48 (0.24-0.7)	R12	Viken	2021-05-27	2021-06-09	0
1.19 (1.04-1.39)	R13	Viken	2021-06-10		1
0.63 (0.2-0.74)	R1	Innlandet	2020-03-15	2020-04-19	0
0.95 (0.77-1.13)	R2	Innlandet	2020-04-20	2020-07-24	0.15
0.81 (0.61-1.04)	R3	Innlandet	2020-07-25	2020-10-09	0.04
1.93 (1.27-2.06)	R4	Innlandet	2020-10-10	2020-10-24	1
0.43 (0.16-0.82)	R5	Innlandet	2020-10-25	2020-11-04	0
0.74 (0.63-1.07)	R6	Innlandet	2020-11-05	2020-12-14	0.07
0.72 (0.22-1.03)	R7	Innlandet	2020-12-15	2021-01-03	0.05

Table 18

R	Parameter	County	From	To	Pr(R>1)
0.13 (0.1-0.28)	R1	Vestfold og Telemark	2020-03-15	2020-04-19	0
1.03 (0.51-1.15)	R2	Vestfold og Telemark	2020-04-20	2020-07-24	0.82
0.81 (0.65-1)	R3	Vestfold og Telemark	2020-07-25	2020-10-09	0.02
0.8 (0.53-1)	R4	Vestfold og Telemark	2020-10-10	2020-11-04	0.03
1.07 (0.75-1.51)	R5	Vestfold og Telemark	2020-11-05	2020-11-19	0.89
0.73 (0.61-1.04)	R6	Vestfold og Telemark	2020-11-20	2021-01-03	0.04
0.54 (0.48-0.81)	R7	Vestfold og Telemark	2021-01-04	2021-02-14	0
2.47 (1.75-2.65)	R8	Vestfold og Telemark	2021-02-15	2021-03-04	1
0.71 (0.64-0.78)	R9	Vestfold og Telemark	2021-03-05	2021-04-15	0
1.65 (1.5-1.8)	R10	Vestfold og Telemark	2021-04-16	2021-05-06	1
0.66 (0.47-0.91)	R11	Vestfold og Telemark	2021-05-07	2021-05-26	0.01
0.82 (0.23-1.28)	R12	Vestfold og Telemark	2021-05-27	2021-06-09	0.27
0.55 (0.11-1.11)	R13	Vestfold og Telemark	2021-06-10		0.06
0.42 (0.13-0.54)	R1	Agder	2020-03-15	2020-04-19	0
1.06 (0.64-1.14)	R2	Agder	2020-04-20	2020-07-31	0.79
0.76 (0.55-1.02)	R3	Agder	2020-08-01	2020-09-19	0.07
0.8 (0.62-1.14)	R4	Agder	2020-09-20	2020-10-09	0.07
0.83 (0.53-1.23)	R5	Agder	2020-10-10	2020-11-04	0.09
0.62 (0.24-0.81)	R6	Agder	2020-11-05	2021-01-03	0
0.37 (0.28-0.75)	R7	Agder	2021-01-04	2021-02-14	0
0.5 (0.19-0.72)	R8	Agder	2021-02-15	2021-04-01	0
1.69 (0.69-1.89)	R9	Agder	2021-04-02	2021-04-15	0.92
1.15 (0.97-1.31)	R10	Agder	2021-04-16	2021-05-18	0.94
0.75 (0.36-1.08)	R11	Agder	2021-05-19	2021-06-04	0.08
0.45 (0.09-0.84)	R12	Agder	2021-06-05		0
0.57 (0.22-0.66)	R1	Vestland	2020-03-15	2020-04-19	0
0.76 (0.65-0.97)	R2	Vestland	2020-04-20	2020-07-24	0.01
1.33 (1.18-1.58)	R3	Vestland	2020-07-25	2020-09-04	1
0.94 (0.83-1.1)	R4	Vestland	2020-09-05	2020-10-09	0.15
1.74 (1.54-1.78)	R5	Vestland	2020-10-10	2020-11-04	1
0.53 (0.25-0.63)	R6	Vestland	2020-11-05	2020-11-30	0
0.59 (0.12-0.75)	R7	Vestland	2020-12-01	2021-01-03	0
0.9 (0.83-1.27)	R8	Vestland	2021-01-04	2021-01-27	0.2
0.66 (0.46-0.84)	R9	Vestland	2021-01-28	2021-02-21	0
1.29 (1.1-1.41)	R10	Vestland	2021-02-22	2021-03-31	1
0.89 (0.72-1.1)	R11	Vestland	2021-04-01	2021-04-15	0.08
0.43 (0.03-0.89)	R12	Vestland	2021-04-16	2021-04-25	0.01
0.8 (0.34-1.21)	R13	Vestland	2021-04-26	2021-05-11	0.18
0.37 (0.06-0.7)	R14	Vestland	2021-05-12	2021-05-31	0
0.85 (0.17-1.43)	R15	Vestland	2021-06-01	2021-06-29	0.31
1.9 (1.05-2.82)	R16	Vestland	2021-06-30		0.98
0.41 (0.1-0.48)	R1	Trøndelag	2020-03-15	2020-04-19	0
0.55 (0.38-0.86)	R2	Trøndelag	2020-04-20	2020-08-31	0
0.41 (0.27-1.03)	R3	Trøndelag	2020-09-01	2020-11-04	0.05
1.25 (0.6-1.41)	R4	Trøndelag	2020-11-05	2020-11-30	0.8
1.17 (1.07-1.47)	R5	Trøndelag	2020-12-01	2021-01-03	1
0.29 (0.2-0.45)	R6	Trøndelag	2021-01-04	2021-02-21	0
0.33 (0.06-0.52)	R7	Trøndelag	2021-02-22	2021-03-14	0
1.26 (0.89-1.81)	R8	Trøndelag	2021-03-15	2021-04-04	0.94
0.82 (0.32-1.43)	R9	Trøndelag	2021-04-05	2021-04-15	0.14
0.41 (0.02-1.25)	R10	Trøndelag	2021-04-16	2021-05-09	0.09
2.15 (1.18-2.8)	R11	Trøndelag	2021-05-10	2021-05-24	1
0.42 (0.06-0.94)	R12	Trøndelag	2021-05-25	2021-06-09	0.02
0.98 (0.43-1.37)	R13	Trøndelag	2021-06-10		0.49
0.1 (0.03-0.3)	R1	Troms og Finnmark	2020-03-15	2020-04-19	0
0.86 (0.15-1.14)	R2	Troms og Finnmark	2020-04-20	2020-09-14	0.09
0.72 (0.31-1.09)	R3	Troms og Finnmark	2020-09-15	2020-11-04	0.04
0.6 (0.06-0.91)	R4	Troms og Finnmark	2020-11-05	2020-11-30	0.02
0.55 (0.09-0.73)	R5	Troms og Finnmark	2020-12-01	2021-01-03	0
0.21 (0.09-0.51)	R6	Troms og Finnmark	2021-01-04	2021-02-14	0
2.23 (1.2-2.68)	R7	Troms og Finnmark	2021-02-15	2021-02-28	0.99
0.46 (0.16-0.69)	R8	Troms og Finnmark	2021-03-01	2021-03-31	0
1.1 (0.46-1.27)	R9	Troms og Finnmark	2021-04-01	2021-04-15	0.72
0.56 (0.12-1.09)	R10	Troms og Finnmark	2021-04-16	2021-04-30	0.04
1.19 (0.42-1.83)	R11	Troms og Finnmark	2021-05-01	2021-05-16	0.71
1.94 (0.62-3.26)	R12	Troms og Finnmark	2021-05-17	2021-05-24	0.91
0.52 (0.12-0.92)	R13	Troms og Finnmark	2021-05-25	2021-06-09	0.01
0.96 (0.43-1.42)	R14	Troms og Finnmark	2021-06-10		0.46
1.34 (1.11-1.53)	AMP factor	All			-

Mean and 95% credible intervals

Table 19: Assumptions

Assumptions	Mean	Distribution	Reference
Mobile Mobility Data			
Telenor coverage	48%		https://ekomstatistikken.nkom.no/
Data updated	June 12th		
Data used in the predictions	June 11th	Fixed	Corrected to preserve population
Model parameters			
Exposed period ($1/\lambda_1$)	3 days	Exponential	Feretti et al 2020
Pre-symptomatic period ($1/\lambda_2$)	2 days	Exponential	Feretti et al 2020
Symptomatic infectious period ($1/\gamma$)	5 days	Exponential	Feretti et al 2020
Asymptomatic, infectious period ($1/\gamma$)	5 days	Exponential	Feretti et al 2020
Infectiousness asympt. (r_{I_a})	0.1	Fixed	Feretti et al 2020
Infectiousness presymp (r_{E_2})	1.25	Fixed	guided by Feretti et al 2020
Prob. asymptomatic infection (p_a)	0.4		Feretti et al 2020
Healthcare			
Fraction asymptomatic infections	40%	Fixed	Mizumoto et al 2020 20% for the old population, Diamond Princess
% symptomatic and asymptomatic infections requiring hospitalization:			Salje et al 2020 corrected for: % of elderly living in elderly homes in Norway (last two age groups) and corrected for presence among positive tested since May 1.
0-9 years	0.1%	Fixed	
10 - 19 years	0.1%		
20 - 29 years	0.5%		
30 - 39 years	1.1%		
40 - 49 years	1.4%		
50 - 59 years	2.9%		
60 - 69 years	5.8%		
70 - 79 years	9.3%		
80+ years	22.3%		
Probability that an admission has been reported on Monday			
From Sunday	32%	Fixed	Estimated from "Beredskapsregistret BeredtC19"
From Saturday	49%		
From Friday	68%		
From Thursday	86%		
Probability that an admission has been reported			
From one day before	53%	Fixed	Estimated from "Beredskapsregistret BeredtC19"
From two days before	77%		
From three days before	82%		
From four days before	91%		
Probability that a positive laboratory test has been reported			
From one day before	6.7%	Fixed	Estimated from MSIS
From two days before	59%		
From three days before	90%		
From four days before	97%		
Probability that a negative laboratory test has been reported			
From one day before	16%	Fixed	Estimated from MSIS
From two days before	74%		
From three days before	92%		
From four days before	98%		

Supplementary analysis: EpiEstim estimation of reproduction number based on laboratory-confirmed cases

To complement the results of the metapopulation model, we present estimates of the temporal evolution of the reproduction number in Norway based on an analysis of laboratory-confirmed cases. The primary purpose of this analysis is to provide a more comprehensive perspective on the epidemic situation, taking into account several data sources.

The combination of hospitalisation data and test data used in the main analysis are likely a less biased information source for the number of real infections, but since testing-criteria have remained constant over a long period of time, we also expect that using confirmed cases can give a reasonable estimate of the reproduction number in this phase of the epidemic. In this approach we do not take into account changes in the number of tests, for example during holidays, so the results in these periods are likely to under-estimate the reproduction number when the holiday starts and overestimate it when the holiday ends and the number of tests return to it's normal level.

EpiEstim method and assumptions: We estimate the instantaneous reproduction number using the procedure outlined in Thompson et al. (2019). This method, implemented in the EpiEstim R-package, uses a Bayesian approach to estimate the instantaneous reproduction number smoothed over a sliding window of 4 days nationally and 7 days regionally, see figure 37. For the results to be comparable to those of the metapopulation model, we use the same natural history parameters. We estimate the date of infection for each confirmed case by first estimating the date of symptom onset and then subtracting 5 days for the incubation period. We estimate the date of symptom onset from the empirical delay between onset and testing in the first reported cases. For each case, we draw 100 possible onset dates from the delay distribution; this gives us 100 epi-curves that we use to estimate the reproduction number. The displayed results are the combined results from all these 100 simulated epi-curves. The serial interval was assumed to be 5 days with uncertainty; the serial interval refers to the time between symptom onset between successive cases in a chain of transmission (see <https://www.medrxiv.org/content/10.1101/2020.02.03.20019497v2>). To account for censoring of observations with onset dates in the last few days we correct the observed data by the mean of a negative binomial distribution with observation probability given by the empirical cumulative distribution of the onset to reporting date distributions. Due to this correction, the results from the last few days are uncertain, as indicated by increasing credible intervals.

Table 20: Estimated reproduction numbers 7 days ago

Location	Reff
National	1.1(1.02 - 1.19)
Oslo	0.98(0.84 - 1.14)
Rogaland	0.89(0.71 - 1.1)
Møre og Romsdal	2.06(1.39 - 2.98)
Nordland	3.02(2.18 - 3.99)
Viken	1.05(0.94 - 1.18)
Innlandet	0.91(0.7 - 1.15)
Vestfold og Telemark	0.9(0.66 - 1.18)
Agder	0.97(0.72 - 1.27)
Vestland	1.46(1.23 - 1.71)
Trøndelag	0.9(0.67 - 1.18)
Troms og Finnmark	1.27(0.99 - 1.6)

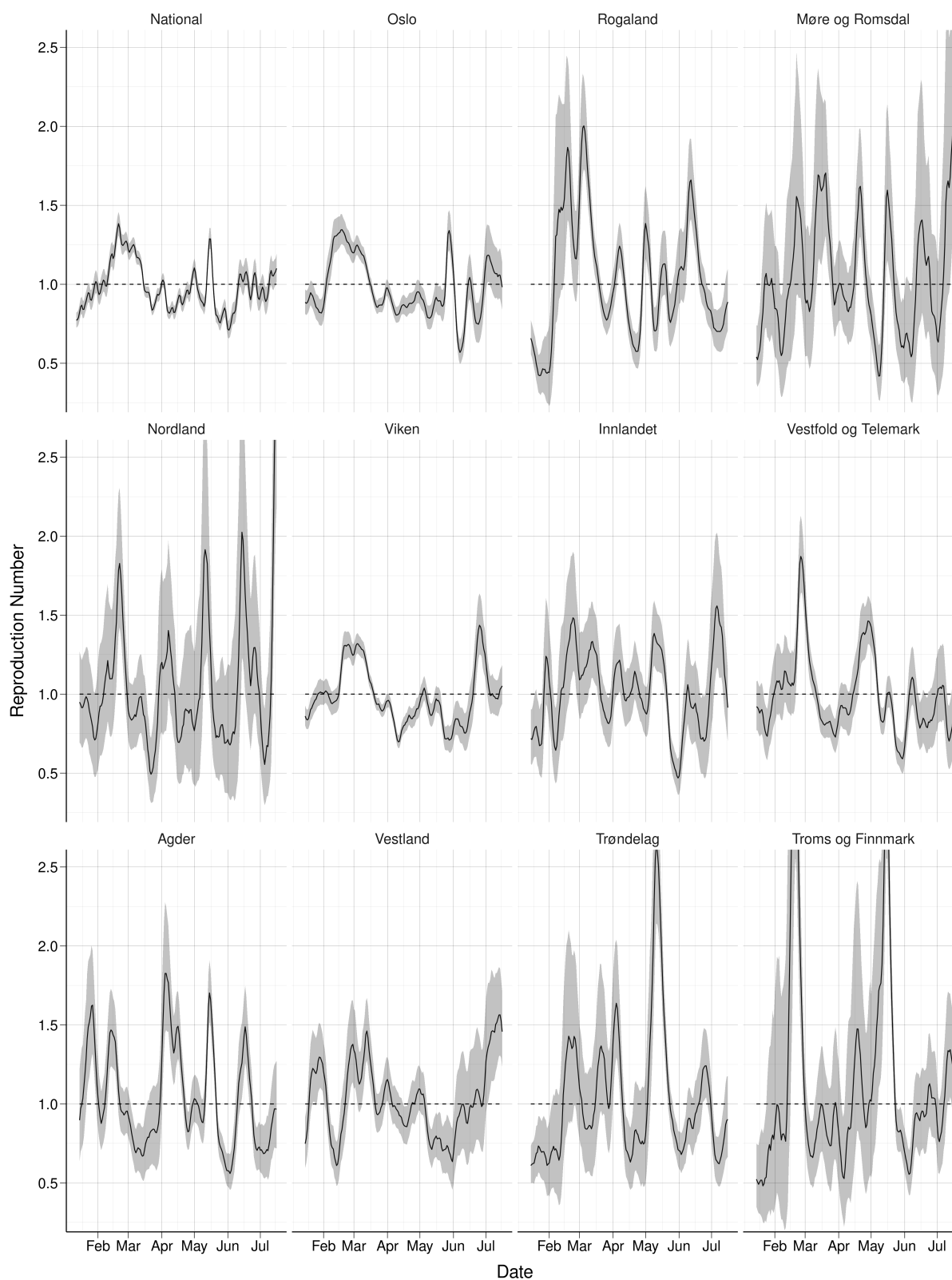


Figure 37: Reproduction number estimated using the R package EpiEstim.

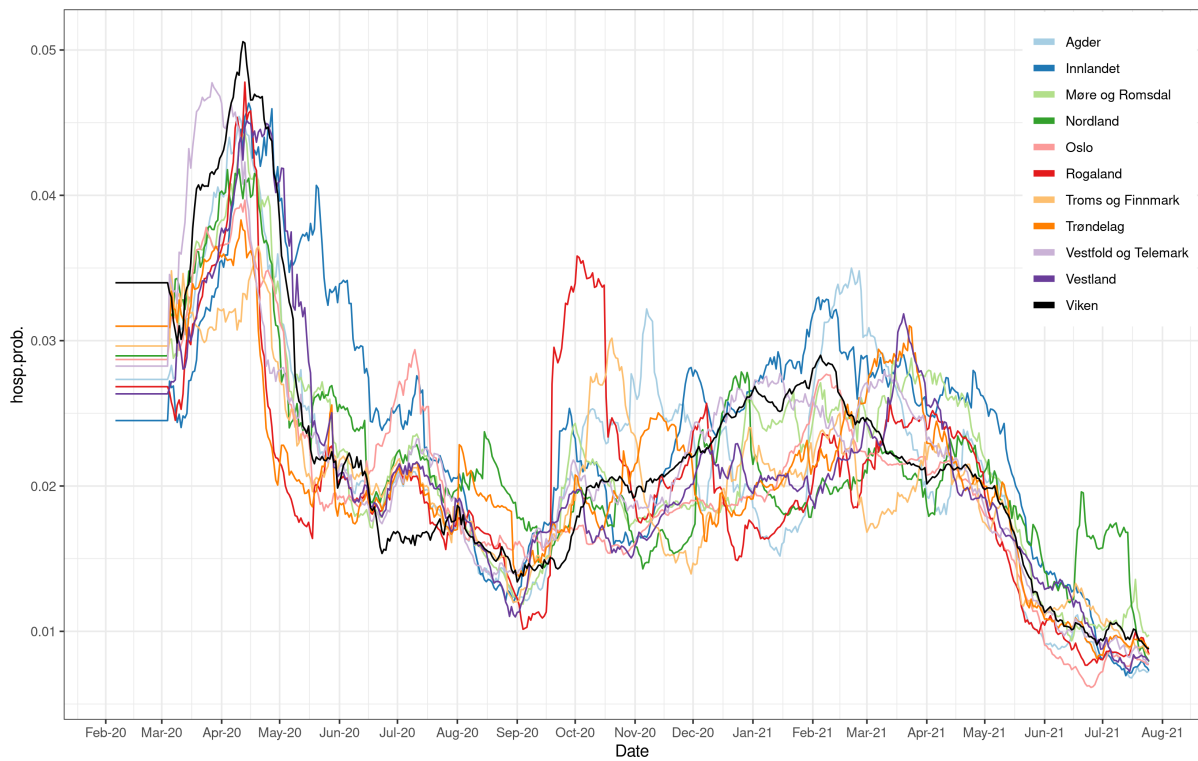


Figure 38: Regional hospitalization probabilities

FHI COVID-19 modelling team:

- **Birgitte Freiesleben de Blasio** - Department of Method Development and Analytics. Norwegian Institute of Public Health and Oslo Centre for Biostatistics and Epidemiology, University of Oslo.
- **Francesco Di Ruscio** - Department of Method Development and Analytics. Norwegian Institute of Public Health.
- **Gunnar Øyvind Isaksson Rø** - Department of Method Development and Analytics. Norwegian Institute of Public Health.
- **Solveig Engebretsen** - Norsk Regnesentral.
- **Arnoldo Frigessi** - Oslo Centre for Biostatistics and Epidemiology, University of Oslo and Oslo University Hospital.
- **Alfonso Diz-Lois Palomares** - Department of Method Development and Analytics. Norwegian Institute of Public Health.
- **Magnus Nygård Osnes** - Department of Method Development and Analytics. Norwegian Institute of Public Health.
- **Anja Bråthen Kristoffersen** - Department of Method Development and Analytics. Norwegian Institute of Public Health.
- **Kenth Engø-Monsen** - Telenor Research.
- **Louis Yat Hin Chan** - Department of Method Development and Analytics. Norwegian Institute of Public Health.
- **Jonas Christoffer Lindstrøm** - Department of Method Development and Analytics. Norwegian Institute of Public Health.
- **Richard White** - Department of Method Development and Analytics. Norwegian Institute of Public Health.
- **Gry Marysol Grøneng** - Department of Method Development and Analytics. Norwegian Institute of Public Health.
- **Chi Zhang** - Department of Method Development and Analytics. Norwegian Institute of Public Health.
- **Jørgen Eriksson Midtbø** - Department of Method Development and Analytics. Norwegian Institute of Public Health.
- **Geir Storvik** - Department of Mathematics. University of Oslo.