

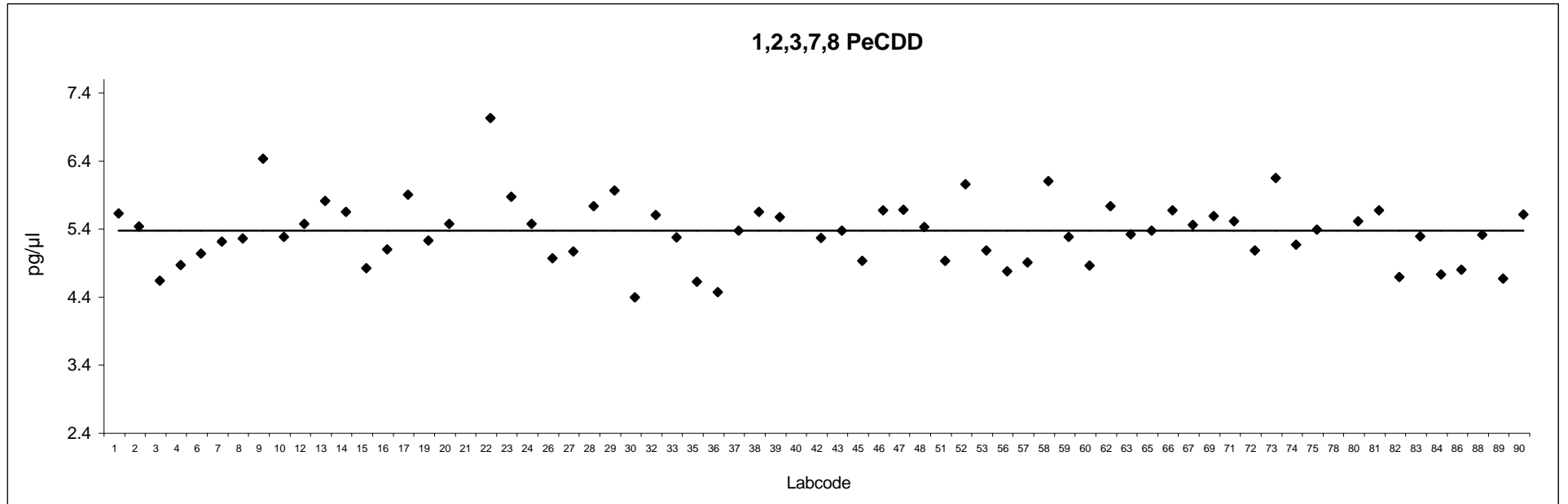
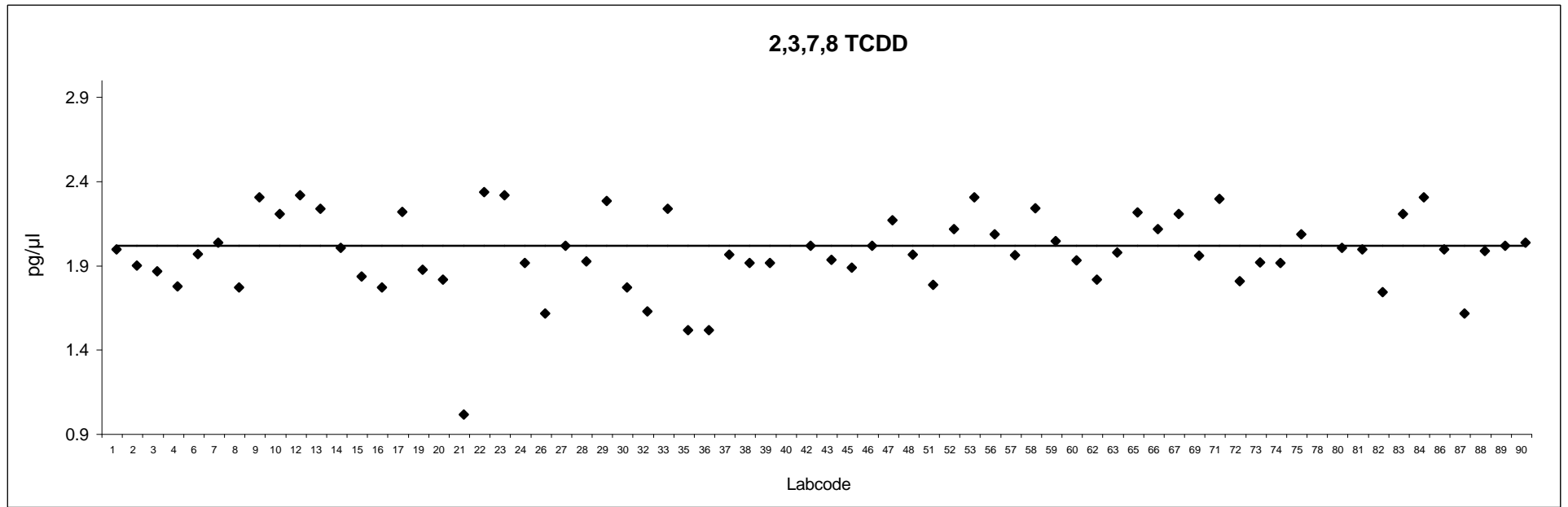
Analyte solution

Congener: 2,3,7,8 TCDD

Lab code	Conc. pg/g fw.	Notes	Lab code	Conc. pg/g fw.	Notes
1	2.0		47	2.2	
2	1.9		48	2.0	
3	1.9		51	1.8	
4	1.8		52	2.1	
6	2.0		53	2.3	
7	2.0		56	2.1	
8	1.8		57	1.9	
9	2.3		58	2.2	
10	2.2		59	2.0	
12	2.3		60	1.9	
13	2.2		62	1.8	
14	2.0		63	2.0	
15	1.8		65	2.2	
16	1.8		66	2.1	
17	2.2		67	2.2	
19	1.9		69	1.9	
20	1.8		71	2.3	
21	1.0		72	1.8	
22	2.3		73	1.9	
23	2.3		74	1.9	
24	1.9		75	2.1	
26	1.6		78	33	outlier
27	2.0		80	2.0	
28	1.9		81	2.0	
29	2.3		82	1.7	
30	1.8		83	2.2	
32	1.6		84	2.3	
33	2.2		86	2.0	
35	1.5		87	1.6	
36	1.5		88	2.0	
37	2.0		89	2.0	
38	1.9		90	2.0	
39	1.9				
40	0.20	outlier			
42	2.0				
43	1.9				
45	1.9				
46	2.0				

Congener: 1,2,3,7,8 PeCDD

Lab code	Conc. pg/g lw.	Notes	Lab code	Conc. pg/g lw.	Notes
1	5.3		47	5.3	
2	5.1		48	5.1	
3	4.3		51	4.6	
4	4.5		52	5.7	
6	4.7		53	4.7	
7	4.8		56	4.4	
8	4.9		57	4.5	
9	6.1		58	5.7	
10	4.9		59	4.9	
12	5.1		60	4.5	
13	5.4		62	5.4	
14	5.3		63	5.0	
15	4.5		65	5.0	
16	4.7		66	5.3	
17	5.5		67	5.1	
19	4.9		69	5.2	
20	5.1		71	5.1	
21	2.3	outlier	72	4.7	
22	6.7		73	5.8	
23	5.5		74	4.8	
24	5.1		75	5.0	
26	4.6		78	83	outlier
27	4.7		80	5.1	
28	5.4		81	5.3	
29	5.6		82	4.3	
30	4.0		83	4.9	
32	5.2		84	4.4	
33	4.9		86	4.4	
35	4.3		88	4.9	
36	4.1		89	4.3	
37	5.0		90	5.2	
38	5.3				
39	5.2				
40	0.49	outlier			
42	4.9				
43	5.0				
45	4.6				
46	5.3				



Analyte solution

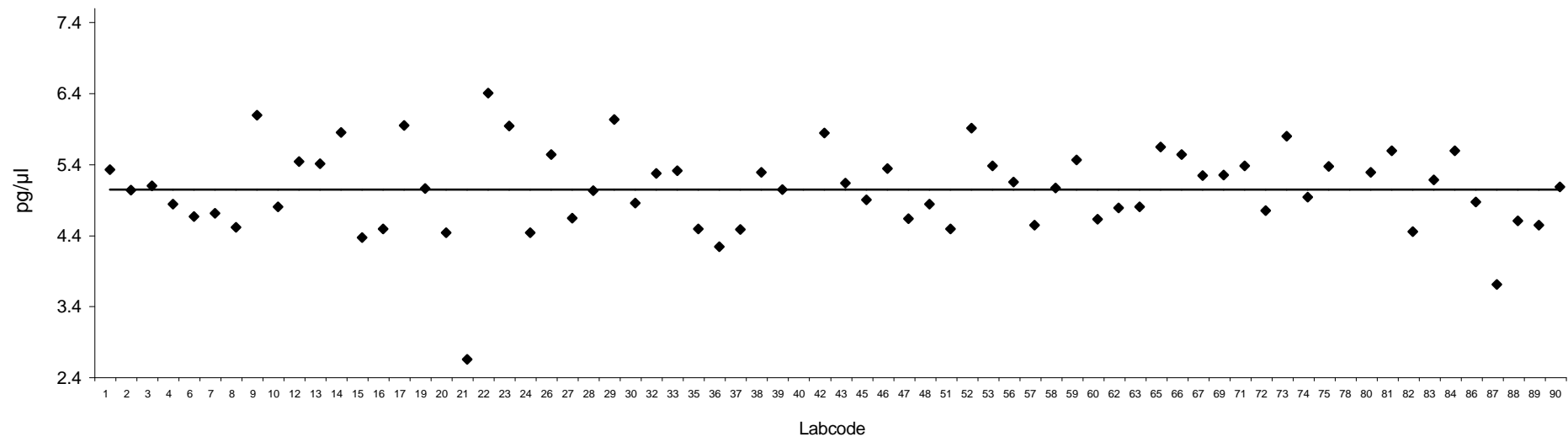
Congener: 1,2,3,4,7,8 HxCDD

Lab code	Conc. pg/g fw.	Notes	Lab code	Conc. pg/g fw.	Notes
1	5.3		47	4.6	
2	5.0		48	4.8	
3	5.1		51	4.5	
4	4.8		52	5.9	
6	4.6		53	5.3	
7	4.7		56	5.1	
8	4.5		57	4.5	
9	6.1		58	5.0	
10	4.8		59	5.4	
12	5.4		60	4.6	
13	5.4		62	4.7	
14	5.8		63	4.8	
15	4.3		65	5.6	
16	4.4		66	5.5	
17	5.9		67	5.2	
19	5.0		69	5.2	
20	4.4		71	5.3	
21	2.6		72	4.7	
22	6.4		73	5.8	
23	5.9		74	4.9	
24	4.4		75	5.3	
26	5.5		78	82	outlier
27	4.6		80	5.3	
28	5.0		81	5.6	
29	6.0		82	4.4	
30	4.8		83	5.1	
32	5.2		84	5.6	
33	5.3		86	4.8	
35	4.4		87	3.7	
36	4.2		88	4.6	
37	4.4		89	4.5	
38	5.3		90	5.0	
39	5.0				
40	0.49	outlier			
42	5.8				
43	5.1				
45	4.9				
46	5.3				

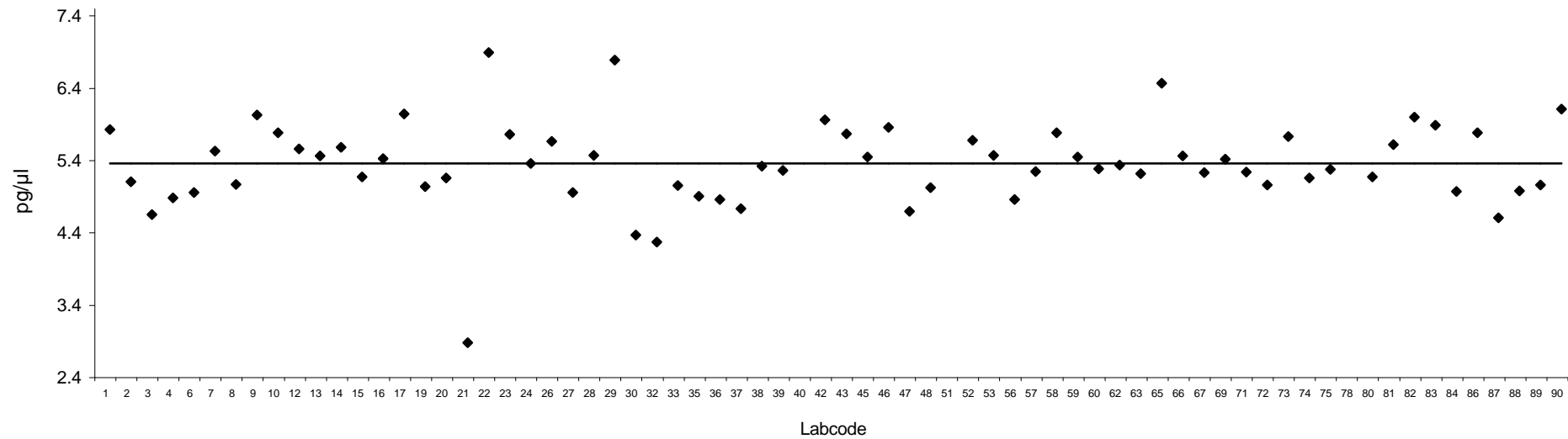
Congener: 1,2,3,6,7,8HxCDD

Lab code	Conc. pg/g lw.	Notes	Lab code	Conc. pg/g lw.	Notes
1	5.5		47	4.3	
2	4.7		48	4.7	
3	4.3		51	1.8	outlier
4	4.5		52	5.3	
6	4.6		53	5.1	
7	5.2		56	4.5	
8	4.7		57	4.9	
9	5.7		58	5.4	
10	5.4		59	5.1	
12	5.2		60	4.9	
13	5.1		62	5.0	
14	5.2		63	4.9	
15	4.8		65	6.1	
16	5.1		66	5.1	
17	5.7		67	4.9	
19	4.7		69	5.1	
20	4.8		71	4.9	
21	2.5		72	4.7	
22	6.5		73	5.4	
23	5.4		74	4.8	
24	5.0		75	4.9	
26	5.3		78	85	outlier
27	4.6		80	4.8	
28	5.1		81	5.3	
29	6.4		82	5.6	
30	4.0		83	5.5	
32	3.9		84	4.6	
33	4.7		86	5.4	
35	4.5		87	4.3	
36	4.5		88	4.6	
37	4.4		89	4.7	
38	5.0		90	5.8	
39	4.9				
40	0.50	outlier			
42	5.6				
43	5.4				
45	5.1				
46	5.5				

1,2,3,4,7,8 HxCDD



1,2,3,6,7,8 HxCDD



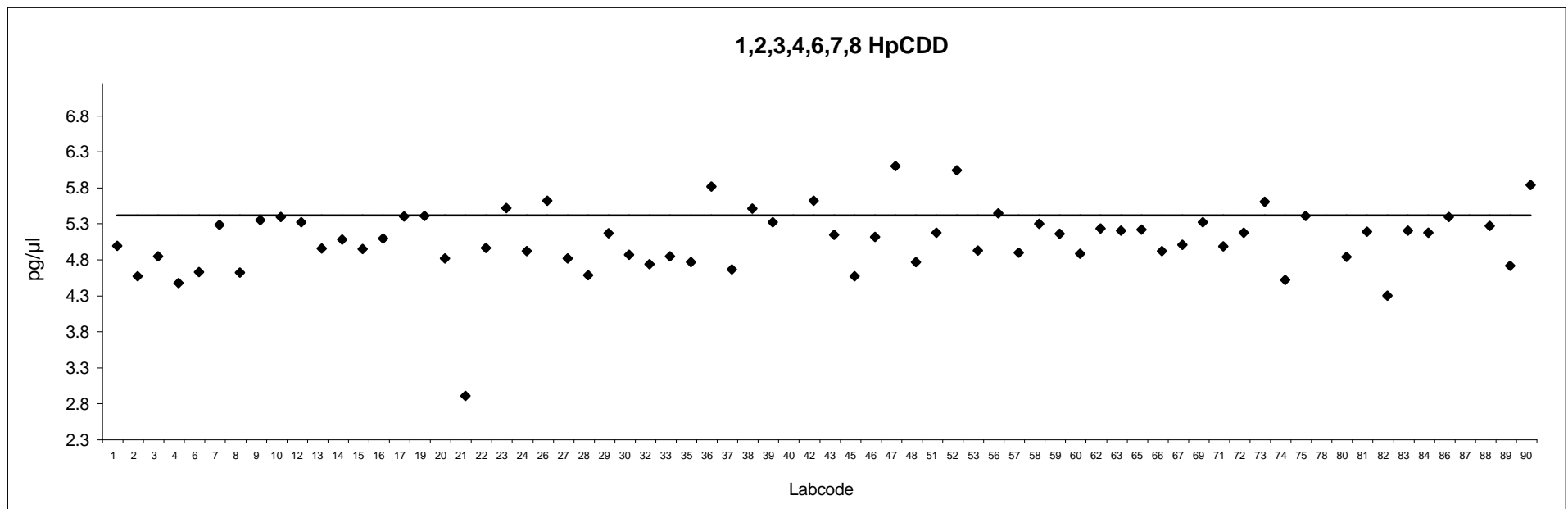
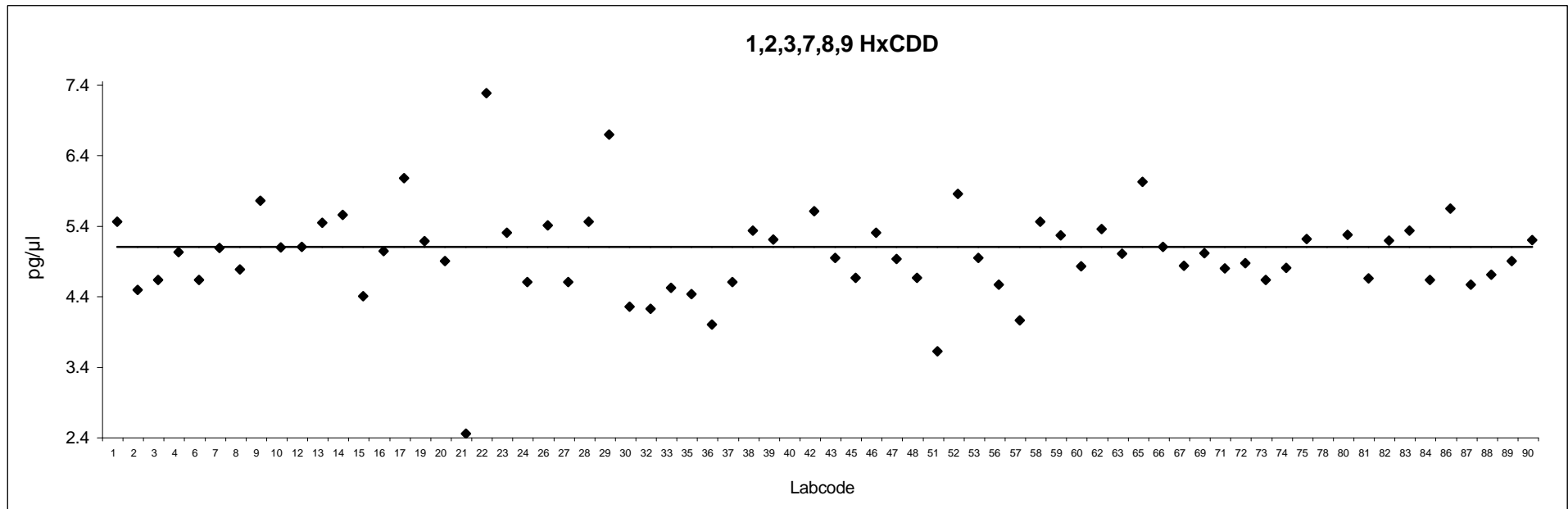
Analyte solution

Congener: 1,2,3,7,8,9 HxCDD

Lab code	Conc. pg/g fw.	Notes	Lab code	Conc. pg/g fw.	Notes
1	5.4		47	4.8	
2	4.4		48	4.6	
3	4.5		51	3.5	
4	4.9		52	5.7	
6	4.5		53	4.8	
7	5.0		56	4.5	
8	4.7		57	4.0	
9	5.7		58	5.4	
10	5.0		59	5.2	
12	5.0		60	4.7	
13	5.3		62	5.3	
14	5.5		63	4.9	
15	4.3		65	5.9	
16	4.9		66	5.0	
17	6.0		67	4.7	
19	5.1		69	4.9	
20	4.8		71	4.7	
21	2.4	outlier	72	4.8	
22	7.2		73	4.5	
23	5.2		74	4.7	
24	4.5		75	5.1	
26	5.3		78	82	outlier
27	4.5		80	5.2	
28	5.4		81	4.6	
29	6.6		82	5.1	
30	4.1		83	5.2	
32	4.1		84	4.5	
33	4.4		86	5.5	
35	4.3		87	4.5	
36	3.9		88	4.6	
37	4.5		89	4.8	
38	5.2		90	5.1	
39	5.1				
40	0.49	outlier			
42	5.5				
43	4.8				
45	4.6				
46	5.2				

Congener: 1,2,3,4,6,7,8 HpCDD

Lab code	Conc. pg/g lw.	Notes	Lab code	Conc. pg/g lw.	Notes
1	4.6		47	5.7	
2	4.2		48	4.4	
3	4.4		51	4.8	
4	4.1		52	5.6	
6	4.2		53	4.5	
7	4.9		56	5.0	
8	4.2		57	4.5	
9	4.9		58	4.9	
10	5.0		59	4.7	
12	4.9		60	4.5	
13	4.5		62	4.8	
14	4.7		63	4.8	
15	4.5		65	4.8	
16	4.7		66	4.5	
17	5.0		67	4.6	
19	5.0		69	4.9	
20	4.4		71	4.6	
21	2.5		72	4.8	
22	4.6		73	5.2	
23	5.1		74	4.1	
24	4.5		75	5.0	
26	5.2		78	83	outlier
27	4.4		80	4.4	
28	4.2		81	4.8	
29	4.8		82	3.9	
30	4.5		83	4.8	
32	4.3		84	4.8	
33	4.4		86	5.0	
35	4.3		87	2.2	outlier
36	5.4		88	4.9	
37	4.3		89	4.3	
38	5.1		90	5.4	
39	4.9				
40	0.50	outlier			
42	5.2				
43	4.7				
45	4.2				
46	4.7				



Analyte solution

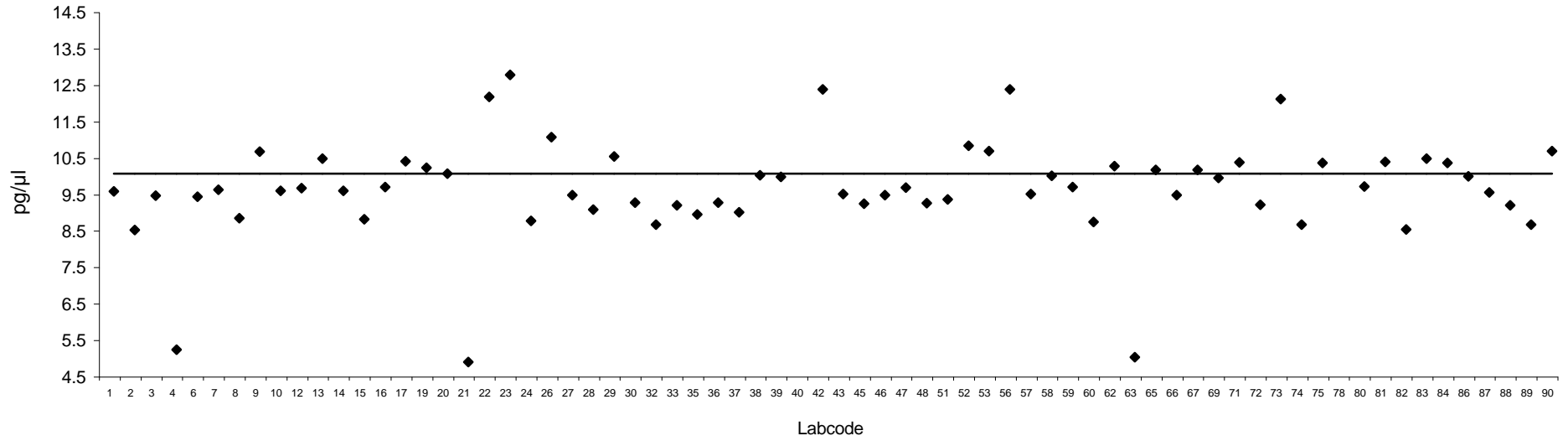
Congener: 1,2,3,4,6,7,8,9 OCDD

Lab code	Conc. pg/g fw.	Notes	Lab code	Conc. pg/g fw.	Notes
1	9.5		47	9.6	
2	8.4		48	9.2	
3	9.4		51	9.3	
4	5.2		52	11	
6	9.4		53	11	
7	9.6		56	12	
8	8.8		57	9.4	
9	11		58	9.9	
10	9.5		59	9.6	
12	9.6		60	8.7	
13	10		62	10	
14	9.5		63	5.0	
15	8.7		65	10	
16	9.6		66	9.4	
17	10		67	10	
19	10		69	9.9	
20	10		71	10	
21	4.8		72	9.1	
22	12		73	12	
23	13		74	8.6	
24	8.7		75	10	
26	11		78	166	outlier
27	9.4		80	9.6	
28	9.0		81	10	
29	10		82	8.5	
30	9.2		83	10	
32	8.6		84	10	
33	9.1		86	9.9	
35	8.9		87	9.5	
36	9.2		88	9.1	
37	8.9		89	8.6	
38	10		90	11	
39	9.9				
40	1.0	outlier			
42	12				
43	9.4				
45	9.2				
46	9.4				

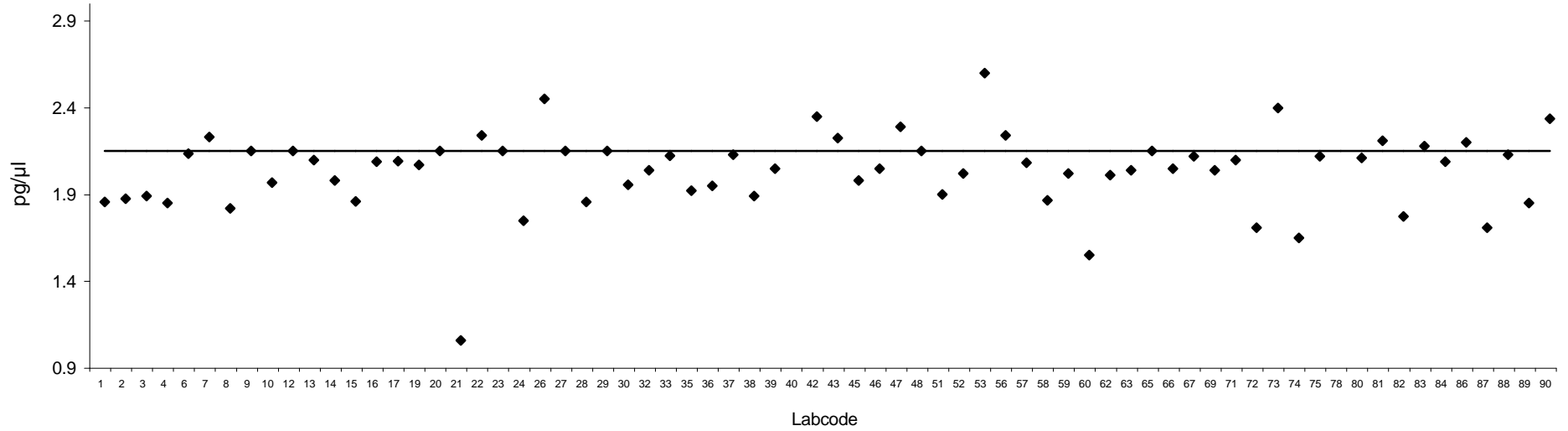
Congener: 2,3,7,8 TCDF

Lab code	Conc. pg/g lw.	Notes	Lab code	Conc. pg/g lw.	Notes
1	1.7		47	2.1	
2	1.7		48	2.0	
3	1.7		51	1.8	
4	1.7		52	1.9	
6	2.0		53	2.5	
7	2.1		56	2.1	
8	1.7		57	1.9	
9	2.0		58	1.7	
10	1.8		59	1.9	
12	2.0		60	1.4	
13	2.0		62	1.9	
14	1.8		63	1.9	
15	1.7		65	2.0	
16	1.9		66	1.9	
17	1.9		67	2.0	
19	1.9		69	1.9	
20	2.0		71	2.0	
21	0.91	outlier	72	1.6	
22	2.1		73	2.2	
23	2.0		74	1.5	
24	1.6		75	2.0	
26	2.3		78	34	outlier
27	2.0		80	2.0	
28	1.7		81	2.1	
29	2.0		82	1.6	
30	1.8		83	2.0	
32	1.9		84	1.9	
33	2.0		86	2.1	
35	1.8		87	1.6	
36	1.8		88	2.0	
37	2.0		89	1.7	
38	1.7		90	2.2	
39	1.9				
40	0.20	outlier			
42	2.2				
43	2.1				
45	1.8				
46	1.9				

1,2,3,4,6,7,8,9 OCDD



2,3,7,8 TCDF



Analyte solution

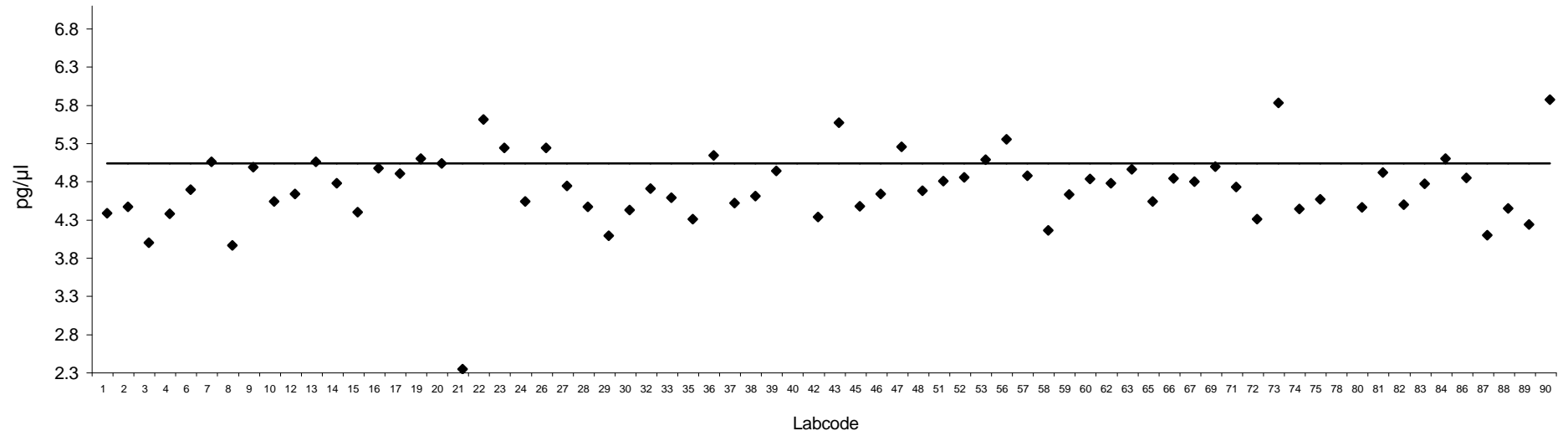
Congener: 1,2,3,7,8 PeCDF

Lab code	Conc. pg/g fw.	Notes	Lab code	Conc. pg/g fw.	Notes
1	4.3		47	5.2	
2	4.4		48	4.6	
3	4.0		51	4.8	
4	4.3		52	4.8	
6	4.7		53	5.1	
7	5.0		56	5.3	
8	3.9		57	4.8	
9	5.0		58	4.1	
10	4.5		59	4.6	
12	4.6		60	4.8	
13	5.0		62	4.7	
14	4.7		63	4.9	
15	4.4		65	4.5	
16	4.9		66	4.8	
17	4.9		67	4.8	
19	5.1		69	5.0	
20	5.0		71	4.7	
21	2.3	outlier	72	4.3	
22	5.6		73	5.8	
23	5.2		74	4.4	
24	4.5		75	4.5	
26	5.2		78	86	outlier
27	4.7		80	4.4	
28	4.4		81	4.9	
29	4.1		82	4.5	
30	4.4		83	4.7	
32	4.7		84	5.1	
33	4.6		86	4.8	
35	4.3		87	4.1	
36	5.1		88	4.4	
37	4.5		89	4.2	
38	4.6		90	5.8	
39	4.9				
40	0.50	outlier			
42	4.3				
43	5.5				
45	4.4				
46	4.6				

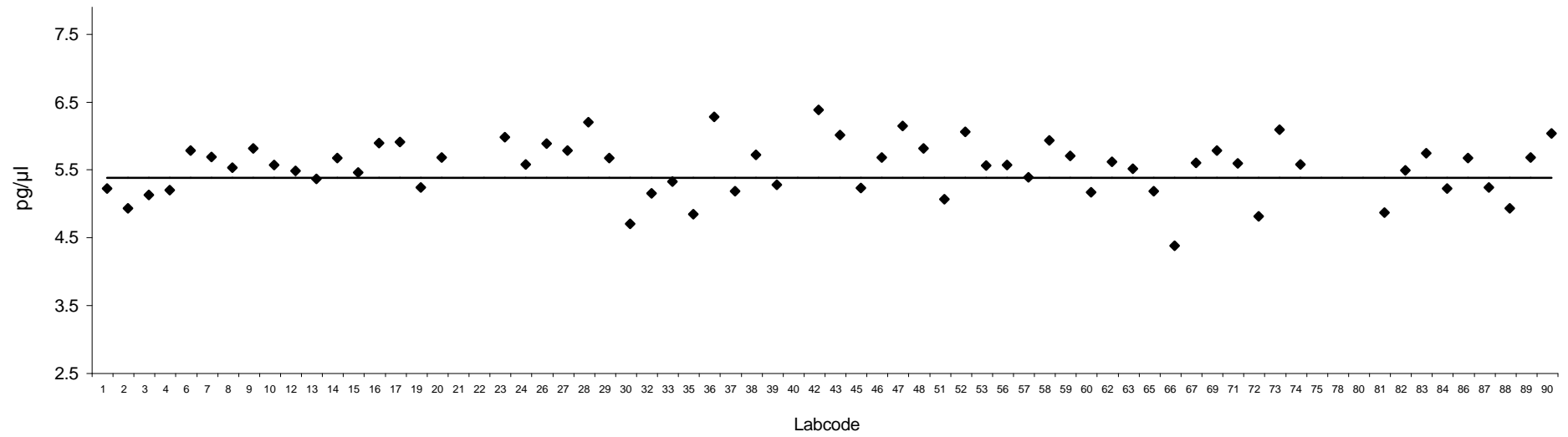
Congener: 2,3,4,7,8 PeCDF

Lab code	Conc. pg/g lw.	Notes	Lab code	Conc. pg/g lw.	Notes
1	4.8		47	5.8	
2	4.6		48	5.4	
3	4.8		51	4.7	
4	4.8		52	5.7	
6	5.4		53	5.2	
7	5.3		56	5.2	
8	5.2		57	5.0	
9	5.4		58	5.5	
10	5.2		59	5.3	
12	5.1		60	4.8	
13	5.0		62	5.2	
14	5.3		63	5.1	
15	5.1		65	4.8	
16	5.5		66	4.0	
17	5.5		67	5.2	
19	4.9		69	5.4	
20	5.3		71	5.2	
21	2.5	outlier	72	4.4	
22	10	outlier	73	5.7	
23	5.6		74	5.2	
24	5.2		75	27	outlier
26	5.5		78	93	outlier
27	5.4		80	19	outlier
28	5.8		81	4.5	
29	5.3		82	5.1	
30	4.3		83	5.4	
32	4.8		84	4.8	
33	4.9		86	5.3	
35	4.5		87	4.9	
36	5.9		88	4.6	
37	4.8		89	5.3	
38	5.3		90	5.7	
39	4.9				
40	0.50	outlier			
42	6.0				
43	5.6				
45	4.9				
46	5.3				

1,2,3,7,8 PeCDF



2,3,4,7,8 PeCDF



Analyte solution

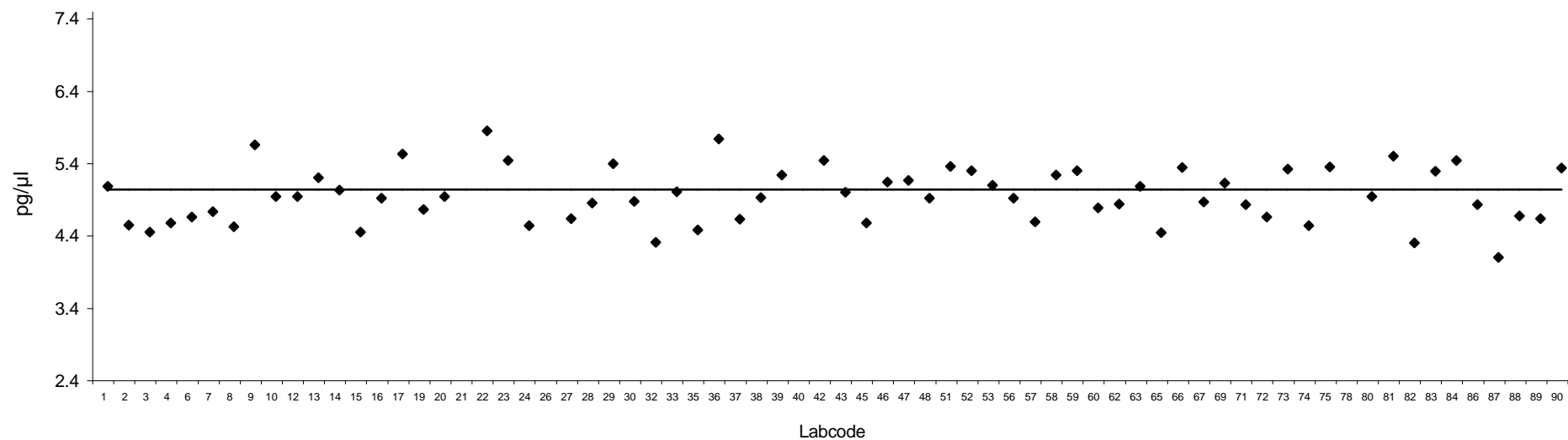
Congener: 1,2,3,4,7,8 HxCDF

Lab code	Conc. pg/g fw.	Notes	Lab code	Conc. pg/g fw.	Notes
1	5.0		47	5.1	
2	4.5		48	4.9	
3	4.4		51	5.3	
4	4.5		52	5.3	
6	4.6		53	5.1	
7	4.7		56	4.9	
8	4.5		57	4.6	
9	5.6		58	5.2	
10	4.9		59	5.3	
12	4.9		60	4.7	
13	5.2		62	4.8	
14	5.0		63	5.0	
15	4.4		65	4.4	
16	4.9		66	5.3	
17	5.5		67	4.8	
19	4.7		69	5.1	
20	4.9		71	4.8	
21	2.4	outlier	72	4.6	
22	5.8		73	5.3	
23	5.4		74	4.5	
24	4.5		75	5.3	
26	8.3	outlier	78	85	outlier
27	4.6		80	4.9	
28	4.8		81	5.5	
29	5.4		82	4.3	
30	4.8		83	5.3	
32	4.3		84	5.4	
33	5.0		86	4.8	
35	4.4		87	4.1	
36	5.7		88	4.6	
37	4.6		89	4.6	
38	4.9		90	5.3	
39	5.2				
40	0.49	outlier			
42	5.4				
43	5.0				
45	4.5				
46	5.1				

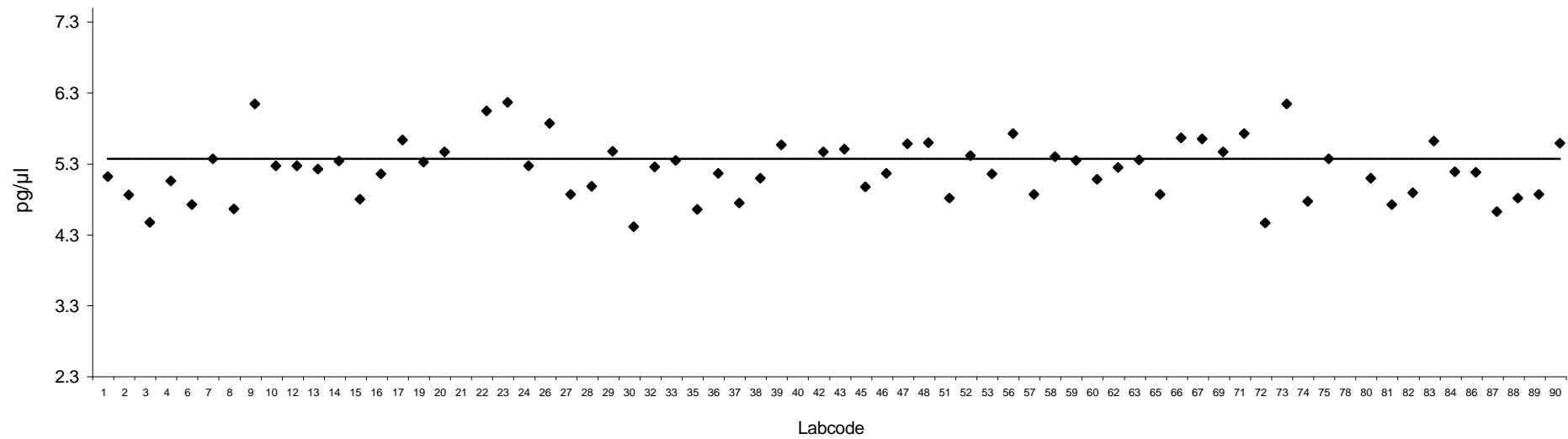
Congener: 1,2,3,6,7,8 HxCDF

Lab code	Conc. pg/g lw.	Notes	Lab code	Conc. pg/g lw.	Notes
1	4.7		47	5.2	
2	4.5		48	5.2	
3	4.1		51	4.5	
4	4.7		52	5.0	
6	4.4		53	4.8	
7	5.0		56	5.4	
8	4.3		57	4.5	
9	5.8		58	5.0	
10	4.9		59	5.0	
12	4.9		60	4.7	
13	4.9		62	4.9	
14	5.0		63	5.0	
15	4.4		65	4.5	
16	4.8		66	5.3	
17	5.3		67	5.3	
19	5.0		69	5.1	
20	5.1		71	5.4	
21	2.2	outlier	72	4.1	
22	5.7		73	5.8	
23	5.8		74	4.4	
24	4.9		75	5.0	
26	5.5		78	84	outlier
27	4.5		80	4.7	
28	4.6		81	4.4	
29	5.1		82	4.5	
30	4.0		83	5.3	
32	4.9		84	4.8	
33	5.0		86	4.8	
35	4.3		87	4.3	
36	4.8		88	4.5	
37	4.4		89	4.5	
38	4.7		90	5.2	
39	5.2				
40	0.50	outlier			
42	5.1				
43	5.1				
45	4.6				
46	4.8				

1,2,3,4,7,8 HxCDF



1,2,3,6,7,8 HxCDF



Analyte solution

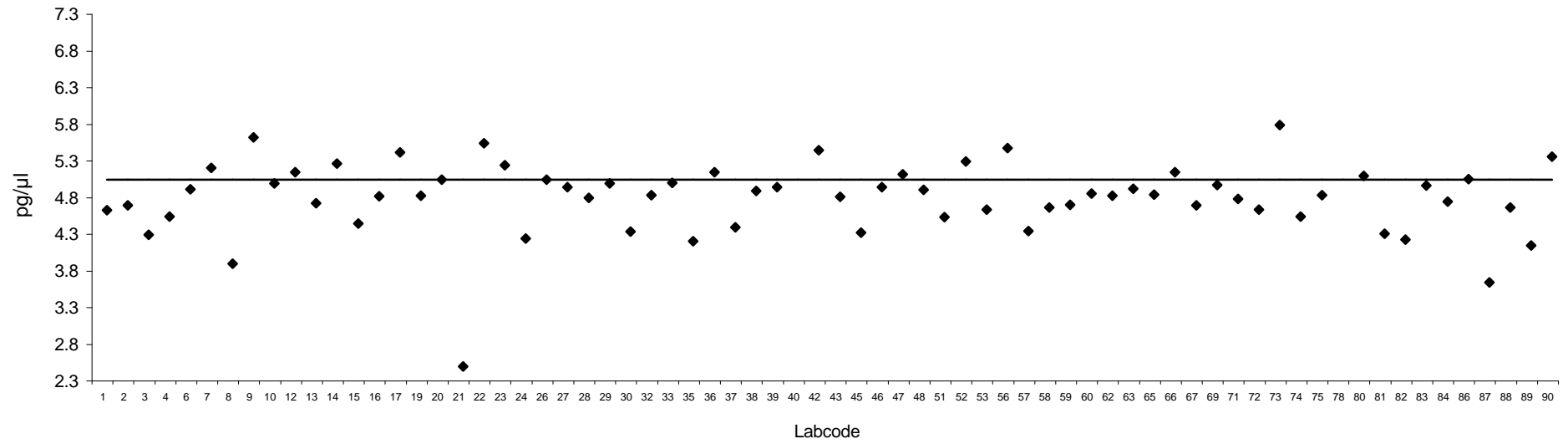
Congener: 2,3,4,6,7,8 HxCDF

Lab code	Conc. pg/g fw.	Notes	Lab code	Conc. pg/g fw.	Notes
1	4.6		47	5.1	
2	4.7		48	4.9	
3	4.3		51	4.5	
4	4.5		52	5.3	
6	4.9		53	4.6	
7	5.2		56	5.4	
8	3.9		57	4.3	
9	5.6		58	4.6	
10	5.0		59	4.7	
12	5.1		60	4.8	
13	4.7		62	4.8	
14	5.2		63	4.9	
15	4.4		65	4.8	
16	4.8		66	5.1	
17	5.4		67	4.7	
19	4.8		69	4.9	
20	5.0		71	4.7	
21	2.5		72	4.6	
22	5.5		73	5.7	
23	5.2		74	4.5	
24	4.2		75	4.8	
26	5.0		78	87	outlier
27	4.9		80	5.1	
28	4.8		81	4.3	
29	5.0		82	4.2	
30	4.3		83	4.9	
32	4.8		84	4.7	
33	5.0		86	5.0	
35	4.2		87	3.6	
36	5.1		88	4.6	
37	4.4		89	4.1	
38	4.9		90	5.3	
39	4.9				
40	0.51	outlier			
42	5.4				
43	4.8				
45	4.3				
46	4.9				

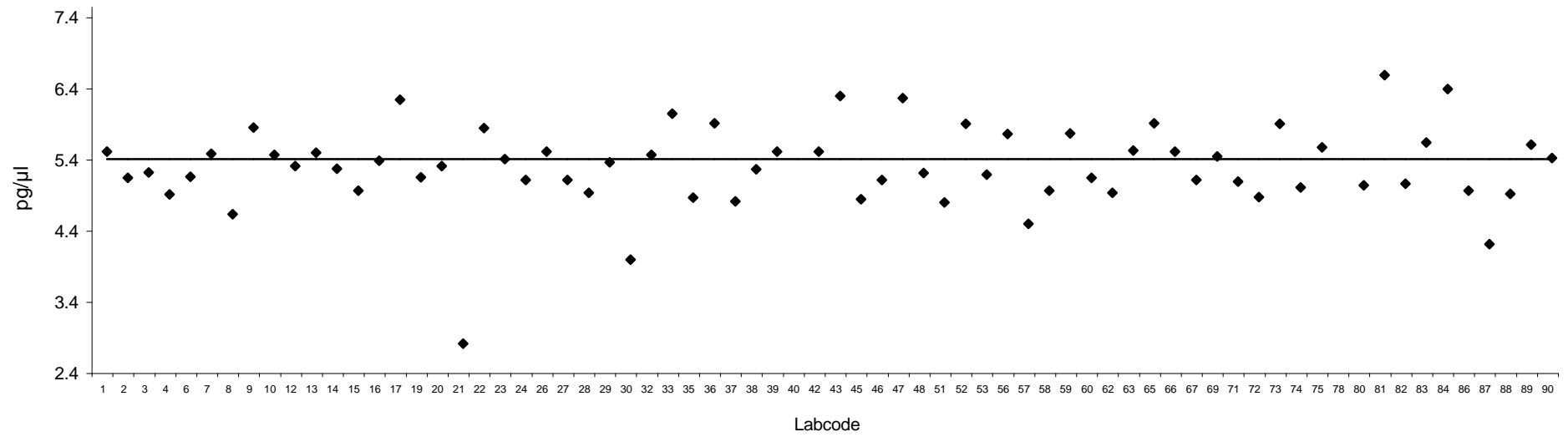
Congener: 1,2,3,7,8,9 HxCDF

Lab code	Conc. pg/g lw.	Notes	Lab code	Conc. pg/g lw.	Notes
1	5.1		47	5.9	
2	4.7		48	4.8	
3	4.8		51	4.4	
4	4.5		52	5.5	
6	4.7		53	4.8	
7	5.1		56	5.4	
8	4.2		57	4.1	
9	5.4		58	4.6	
10	5.1		59	5.4	
12	4.9		60	4.7	
13	5.1		62	4.5	
14	4.9		63	5.1	
15	4.6		65	5.5	
16	5.0		66	5.1	
17	5.8		67	4.7	
19	4.7		69	5.0	
20	4.9		71	4.7	
21	2.4	outlier	72	4.5	
22	5.4		73	5.5	
23	5.0		74	4.6	
24	4.7		75	5.2	
26	5.1		78	83	outlier
27	4.7		80	4.6	
28	4.5		81	6.2	
29	5.0		82	4.7	
30	3.6		83	5.2	
32	5.1		84	6.0	
33	5.6		86	4.6	
35	4.5		87	3.8	
36	5.5		88	4.5	
37	4.4		89	5.2	
38	4.9		90	5.0	
39	5.1				
40	0.49	outlier			
42	5.1				
43	5.9				
45	4.4				
46	4.7				

2,3,4,6,7,8 HxCDF



1,2,3,7,8,9 HxCDF



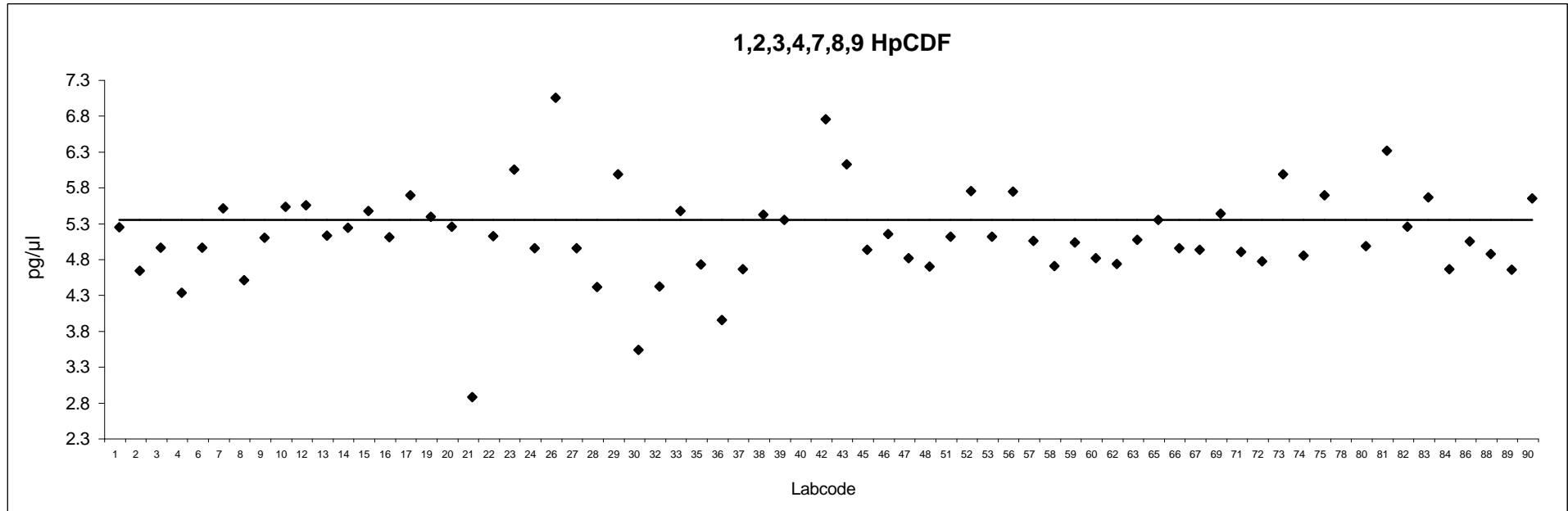
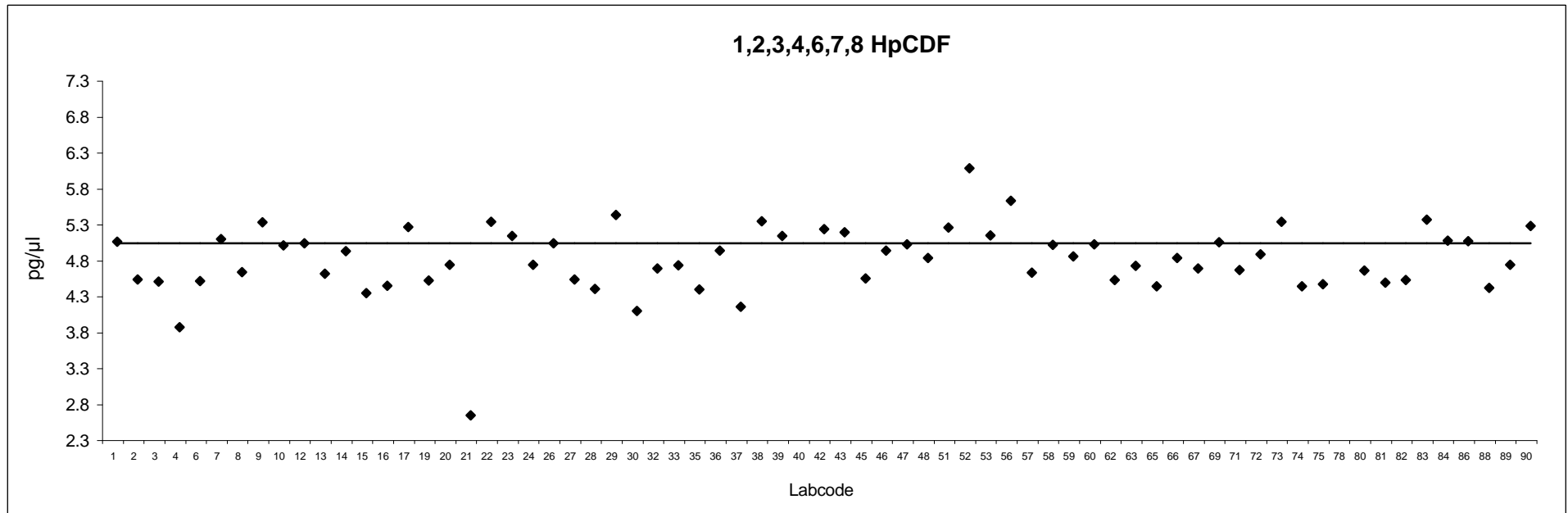
Analyte solution

Congener: 1,2,3,4,6,7,8 HpCDF

Lab code	Conc. pg/g fw.	Notes	Lab code	Conc. pg/g fw.	Notes
1	5.0		47	5.0	
2	4.5		48	4.8	
3	4.5		51	5.2	
4	3.8		52	6.0	
6	4.5		53	5.1	
7	5.1		56	5.6	
8	4.6		57	4.6	
9	5.3		58	5.0	
10	5.0		59	4.8	
12	5.0		60	5.0	
13	4.6		62	4.5	
14	4.9		63	4.7	
15	4.3		65	4.4	
16	4.4		66	4.8	
17	5.2		67	4.7	
19	4.5		69	5.0	
20	4.7		71	4.6	
21	2.6		72	4.9	
22	5.3		73	5.3	
23	5.1		74	4.4	
24	4.7		75	4.4	
26	5.0		78	82	outlier
27	4.5		80	4.6	
28	4.4		81	4.5	
29	5.4		82	4.5	
30	4.1		83	5.3	
32	4.7		84	5.0	
33	4.7		86	5.0	
35	4.4		88	4.4	
36	4.9		89	4.7	
37	4.1		90	5.2	
38	5.3				
39	5.1				
40	0.50	outlier			
42	5.2				
43	5.2				
45	4.5				
46	4.9				

Congener: 1,2,3,4,7,8,9 HpCDF

Lab code	Conc. pg/g lw.	Notes	Lab code	Conc. pg/g lw.	Notes
1	4.9		47	4.5	
2	4.3		48	4.4	
3	4.6		51	4.8	
4	4.0		52	5.4	
6	4.6		53	4.8	
7	5.2		56	5.4	
8	4.2		57	4.7	
9	4.8		58	4.4	
10	5.2		59	4.7	
12	5.2		60	4.5	
13	4.8		62	4.4	
14	4.9		63	4.7	
15	5.1		65	5.0	
16	4.8		66	4.6	
17	5.3		67	4.6	
19	5.0		69	5.1	
20	4.9		71	4.6	
21	2.5		72	4.4	
22	4.8		73	5.6	
23	5.7		74	4.5	
24	4.6		75	5.3	
26	6.7		78	86	outlier
27	4.6		80	4.6	
28	4.1		81	6.0	
29	5.6		82	4.9	
30	3.2		83	5.3	
32	4.1		84	4.3	
33	5.1		86	4.7	
35	4.4		88	4.5	
36	3.6		89	4.3	
37	4.3		90	5.3	
38	5.1				
39	5.0				
40	0.50	outlier			
42	6.4				
43	5.8				
45	4.6				
46	4.8				



Analyte solution

Congener: 1,2,3,4,6,7,8,9 OCDF

Lab code	Conc. pg/g fw.	Notes	Lab code	Conc. pg/g fw.	Notes
1	9.9		47	8.7	
2	9.0		48	11	
3	9.5		51	8.1	
4	4.9		52	11	
6	9.5		53	9.4	
7	9.6		56	9.5	
8	8.7		57	9.7	
9	11		58	11	
10	9.2		59	9.8	
12	12		60	8.2	
13	9.9		62	8.6	
14	9.1		63	4.7	outlier
15	9.2		65	9.3	
16	8.6		66	9.8	
17	11		67	10	
19	9.4		69	10	
20	10		71	10	
21	5.2		72	9.3	
22	11		73	13	
23	11		74	9.1	
24	8.5		75	11	
26	11		78	167	outlier
27	9.5		80	9.6	
28	8.4		81	11.4	
29	11		82	8.5	
30	9.6		83	11	
32	8.3		84	11	
33	9.1		86	9.8	
35	8.3		87	14	
36	9.2		88	8.1	
37	7.9		89	8.2	
38	9.7		90	12	
39	9.7				
40	1.0	outlier			
42	14				
43	9.5				
45	9.2				
46	9.3				

1,2,3,4,6,7,8,9 OCDF

