

2018



This project has received funding from the European Union's Horizon 2020 research and innovation programme under grant agreement No 774210

Ref. Ares(2018)3731687 - 13/07/2018



D1.2: Establish the Science, Policy and Ethics Advisory Board

Norwegian Institute of
Public Health
06.07.2018



Deliverable administration and summary			
Due date	31.05.2018		
Submission date	10.07.2018		
Deliverable type	Report		
Contributors:	Name	Organisation	Role / Title
Deliverable Leader	Knut-Inge Klepp	NIPH	Project Coordinator
Contributing Author(s)	Therese Bakke Arnfinn Helleve	NIPH NIPH	Project Manager WP-3 Leader
Reviewer(s)	Project Steering Committee	All partners	
Final review and approval	Knut-Inge Klepp	NIPH	Project Coordinator

Document change history				
Version	Release date	Reason for Change	Status (Draft/In-review/Submitted)	Distribution

Dissemination level			
PU	Public		X



Executive Summary

The Science, Policy and Ethics Advisory Board (SPEAB) is established to help guide and assist the Project Steering Committee in implementing the CO-CREATE project. The members of the board are appointed by the Project Steering Committee. The SPAB has been established with eight members but new members will appointed throughout the project phase.



Table of content

Executive Summary	3
List of acronyms / abbreviations	5
Introduction.....	6
Deliverable description	6
Objective of deliverable	6
Background.....	6
Current status.....	7



List of acronyms / abbreviations

PSC	Project Steering Committee
SPEAB	Science, Policy and Ethics Advisory Board
WP	Work Packages



Introduction

Deliverable description

The Project Steering Committee (PSC) has established a Science, Policy and Ethics Advisory Board (SPEAB) to help guide and assist the PSC in implementing the CO-CREATE project.

Objective of deliverable

The objective of this deliverable is to present the SPEAB, its members and their role, including rights and obligations.

Background

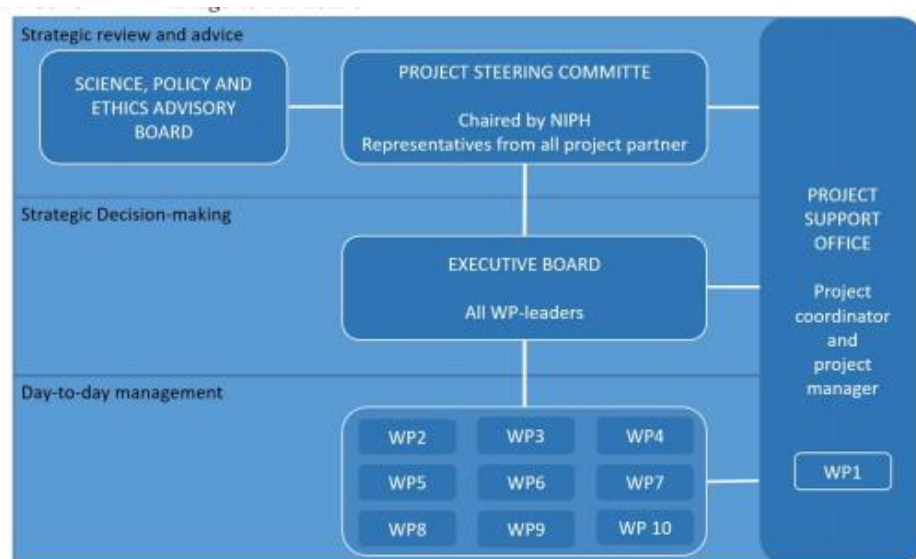
Deliverable 1.2 reports on the establishment of a CO-CREATE Science, Policy and Ethics Advisory Board (SPEAB). The members of SPEAB have leading and unique competence in areas that are crucial for the project. The SPEAB is independent and will not have any formal responsibilities in the project. The members are selected based on their scientific records, expertise and network; their role and expertise on national and international policymaking; their role as and link to relevant stakeholders.

As outlined in the Grant Agreement, the project will establish a joint board with leading scientist, policy makers and young people to advise the project throughout the project period. Consultations of board members will be done both individually and as a group, and selected members will be invited to annual PSC meetings and/or the Executive Board Meetings.

Members of the SPEAB will sign a non-disclosure agreement to be included.

A brief description of the processes for consulting with SPEAB members will be described in the project quality assurance plan (deliverable 1.5).

The SPEAB is included as part of the CO-CREATE organizational structure, as seen from the overview of the project management structure presented below.



Current status

The following members have so far been proposed by the Coordinator, appointed by the PSC and have agreed to serve on the SPEAB:

- Wolfgang **Ahrens**, Professor, Leibniz Institute for Prevention Research and Epidemiology, Germany
- Joao Da Silva Breda **Rodrigues**, Head WHO European Centre for Prevention and control of NCD & Programme Manager Nutrition, Physical Activity and Obesity Moscow, WHO
- Diane **Finegood**, Professor, Centre for Dialogue, Simon Fraser University, Canada
- Corinna **Hawkes**, Professor of Food Policy & Director, Centre for Food Policy Director, City, University of London, UK
- Bruce Y. **Lee**, Associate Professor of International Health at the Johns Hopkins Bloomberg School of Public Health & Executive Director of the Global Obesity Prevention Center, USA
- Franco **Sassi**, Chair in International Health Policy and Economics & Director, Centre for Health Economics and Policy Innovation, Imperial College Business School, London, UK
- James F. **Sallis**, Distinguished Professor Emeritus, University of California, USA

In addition, the **European Consumer Organisation** (BEUC) is a member of the SPEAB with Emma Calvert, Food Policy Officer, as their contact person.

Further experts will be added to the SPEAB as need arises and youth representatives to the board will be selected from the Youth Alliances (WP-5).

→ The CO-CREATE project has received funding from the European Union's Horizon 2020 research and innovation programme under grant agreement No 774210. The products of the research are the responsibility of the authors: the European Commission is not responsible for any use that may be made of them.

